



177 2f1 Dalkeith Road, Edinburgh,
EH16

REVERE

Key Features

- bright south-west-facing lounge.
- Two spacious double bedrooms
- well-kept shared rear garden
- Charming feature fireplace
- Light, airy, and inviting



Within easy reach of Holyrood Park, The Royal Commonwealth Pool, and Prestonfield Golf Club, this traditional two-bedroom apartment combines a wonderfully spacious layout with stylish modern touches and elegant period detail.





From its welcoming second-floor hallway, you move into a bright south-west-facing lounge. Bay windows frame views over Dalkeith Road, while handsome wooden flooring, a calm colour palette, and fine period details including exquisite cornicing, a ceiling rose, a built-in press, and a charming feature fireplace add to the room's timeless character. With its high ceilings, the space feels light, airy, and inviting.

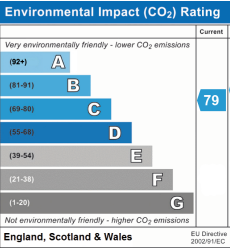
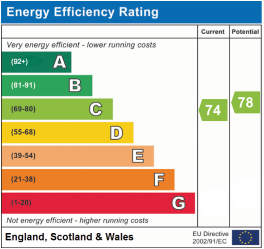
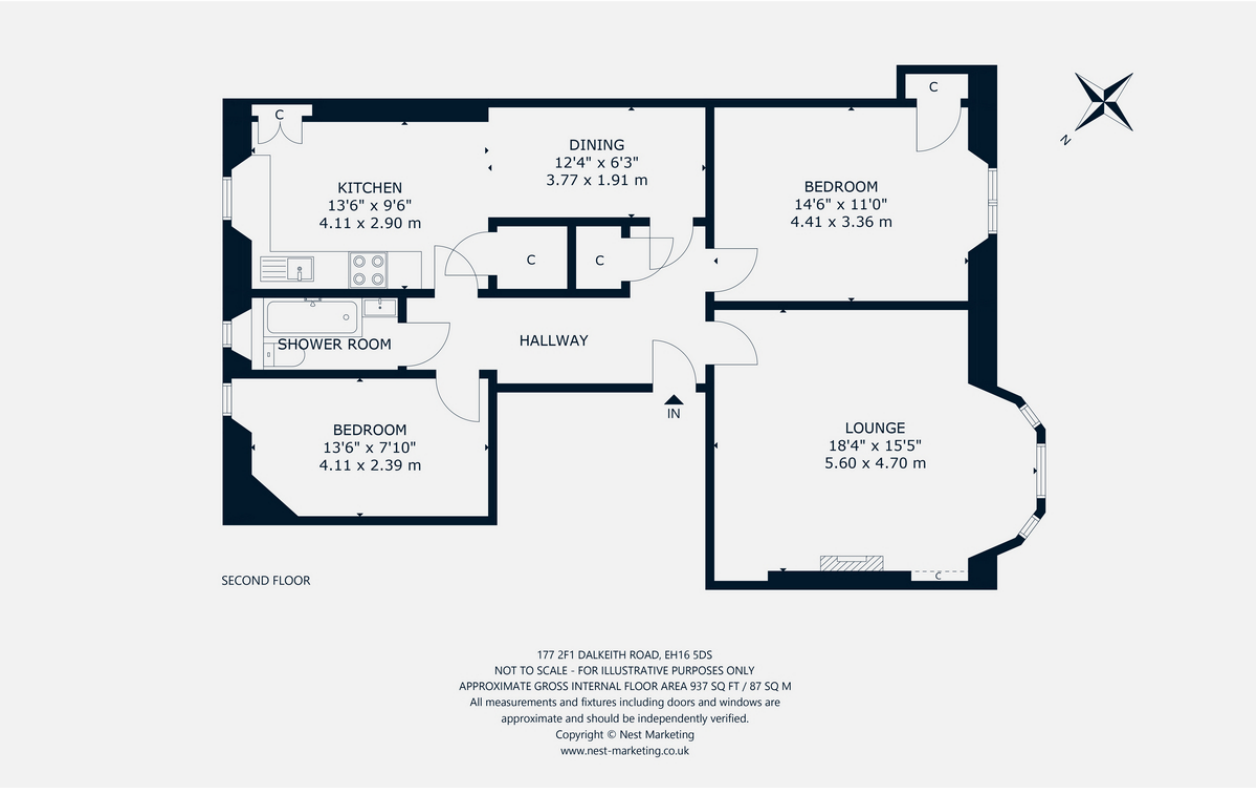
Across the hall, the generously proportioned dining kitchen is designed for modern living, showcasing sleek gloss-white cabinetry, wood-effect worktops, and a tiled splashback. Integrated appliances include a hob, oven, and extractor hood, while a built-in cupboard provides excellent storage.

Two spacious double bedrooms are both finished in neutral tones with wooden flooring. A contemporary shower room, fitted with a washbasin built into vanity and a WC completes the internal accommodation.

Externally, residents enjoy a large, well-kept shared rear garden with a drying green, while on-street permit parking is available to the front.

To arrange a viewing, please contact Team Revere today.





Tenure Type: Freehold
Council Tax Band: D
Council Authority: Edinburgh

Revere
80 George Street, Edinburgh, EH2 3BU
0131 378 2550 | sales@reverehome.co.uk

REVERE