



Bern Cottage, Cardigan, SA43 2JL

Offers in the region of £290,000



Bern Cottage, Tresaith, SA43 2JL

- Renovated stone cottage just 200m from Tresaith beach
- Currently a successful holiday let with increasing bookings
- Open-plan lounge, dining, and kitchen with wood-burning stove
- Two first-floor bedrooms with deep-set windows
- Modern bathroom with power shower and heated towel rail
- Private courtyard garden with an outdoor shower and tap
- Off-road parking—an excellent asset in a seaside location
- Wooden steps leading from parking area to the entrance
- Perfect for holiday rental investment or coastal living
- Energy Rating: F

About The Property

Looking for a charming stone cottage just moments from the beach? This beautifully renovated home in Tresaith is currently a thriving holiday let, offering a rare opportunity to own a coastal property just 200 meters from the sandy shores of Cardigan Bay.

This detached stone cottage sits in the heart of Tresaith, a small seaside village known for its sandy beach and scenic coastal walks. Recently renovated, the property blends character with modern comfort, making it a perfect coastal getaway or an attractive investment as a holiday let. With bookings increasing year after year, it presents an excellent opportunity for those looking to step into the thriving holiday rental market or secure a charming home by the sea.

The layout is practical and well thought out. A utility porch at the entrance provides space for laundry appliances and storage, keeping the main living areas clutter-free. Stepping through into the open plan living, dining, and kitchen area, the character of the cottage comes to life. Exposed beams, deep windowsills, and a Nordica wood-burning stove add warmth and charm, while modern touches like an integrated dishwasher and electric hob bring convenience.

Tiled flooring runs throughout the ground floor, ensuring practicality for a coastal home. The lounge area offers a cosy space to relax, with a TV point and a feature wood burner for cooler evenings. The dining space sits between the kitchen and lounge, making it easy to enjoy meals together before heading out to explore the coastline.

The kitchen is fitted with matching modern units complete with built in electric oven and hob (with extractor over), a slimline dishwasher, space for an undercounter fridge and a sink with drainer.

Offers in the region of £290,000



Details continued:

A set of steps leads up from the dining area to the bathroom, fitted with a power shower over the bath, w/c, wash hand basin, a heated towel rail, and tiled walls, there is also access to the attic (where the electric boiler is housed). The first floor hosts two bedrooms, both with deep windowsills and views towards the front of the cottage. The main bedroom benefits from two windows, bringing in plenty of natural light, while the second bedroom also offers a

comfortable and well-proportioned space. Both bedrooms have sea glimpses, between the properties in front.

Externally:
Externally, the cottage benefits from an off-road parking space—an invaluable feature in a coastal location. Wooden steps lead down to a private courtyard garden, providing a sheltered spot to sit outside. Practical additions such as an outside shower and tap ensure sandy feet and wetsuits can be rinsed

off with ease before heading indoors. A bin storage area under the steps adds further practicality.

Whether used as a private holiday retreat, a permanent home by the coast, or a profitable holiday let, this Tresaith cottage offers a wonderful chance to embrace seaside living with modern comforts in a truly special location.

Utility/Porch
5'9" x 3'10" max

Open Plan Living/Dining area
19'7" x 9'8"

Kitchen area
7'5" x 8'7" max

Landing area
2'7" x 2'4"

Bathroom
8'2" x 8'0" at widest point

Top landing area
5'5" x 2'7" max

Bedroom 1
10'9" x 10'0" at widest point

Bedroom 2
9'1" x 11'5" into recess

IMPORTANT ESSENTIAL INFORMATION:
WE ARE ADVISED BY THE CURRENT OWNER(S) THAT THIS PROPERTY BENEFITS FROM THE FOLLOWING:

COUNCIL TAX BAND: D - Ceredigion / Carmarthenshire / Pembrokeshire County Council

TENURE: FREEHOLD

PARKING: Off-Road Parking for one car
PROPERTY CONSTRUCTION: Traditional Build

SEWERAGE: Mains Drainage

ELECTRICITY SUPPLY: Mains

WATER SUPPLY: Mains
HEATING: Electric Heating with immersion heater for hot water and a wood burning stove.

BROADBAND: Connected - TYPE - Standard - up to 12 Mbps Download, up to 1 Mbps upload FTTC, ADSL - PLEASE CHECK COVERAGE FOR THIS PROPERTY HERE - <https://checker.ofcom.org.uk/> (Link to <https://checker.ofcom.org.uk/>)

MOBILE SIGNAL/COVERAGE INTERNAL: Signal Available although some networks may have limited coverage in this area, please check network providers for availability, or please check OfCom here - <https://checker.ofcom.org.uk/> (Link to <https://checker.ofcom.org.uk/>)

BUILDING SAFETY - The seller has advised





that there are none that they are aware of. There are steps leading down to the property from the parking area.

RESTRICTIONS: The seller has advised that there are none that they are aware of.

RIGHTS & EASEMENTS: The seller has advised that there are none that they are aware of.

FLOOD RISK: Rivers/Sea - N/A - Surface Water: N/A

COASTAL EROSION RISK: None in this location

PLANNING PERMISSIONS: There is planning approved for the change of use for an area of caravan park offices and unused back up facilities (Sui Generis) to cafe/bar/deli/shop (A3) at Gwalia Falls Caravan Park, which is just above this property on the other side of the road.

ACCESSIBILITY/ADAPTATIONS: The seller has advised that there are no special Accessibility/Adaptations on this property.

COALFIELD OR MINING AREA: The seller has advised that there are none that they are aware of as this area is not in a coal or mining area.

VIEWINGS: By appointment only. There are steps leading down to the front door to access this property.

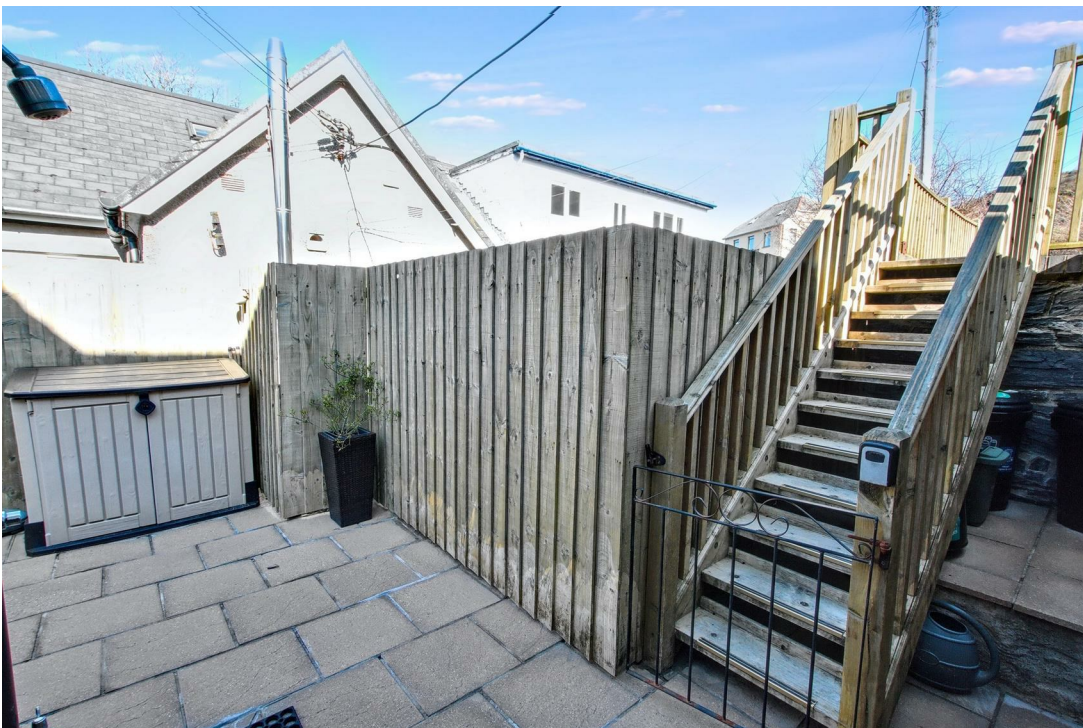
PLEASE BE ADVISED, WE HAVE NOT TESTED ANY SERVICES OR CONNECTIONS TO THIS PROPERTY.

GENERAL NOTE: All floor plans, room dimensions and areas quoted in these details are approximations and are not to be relied upon. Any appliances and services listed in these details have not been tested.

MONEY LAUNDERING REGULATIONS: The successful purchaser(s) will be required to produce proof of identification to prove their identity within the terms of the Money Laundering Regulations. These are a photo ID (e.g. Passport or Photo Driving Licence) and proof of address (e.g. a recent Utility Bill/Bank Statement from the last 3 months). Proof of funds will also be required, including a mortgage agreement in principle document if a mortgage is required.

HW/HW/03/25/OK













DIRECTIONS:

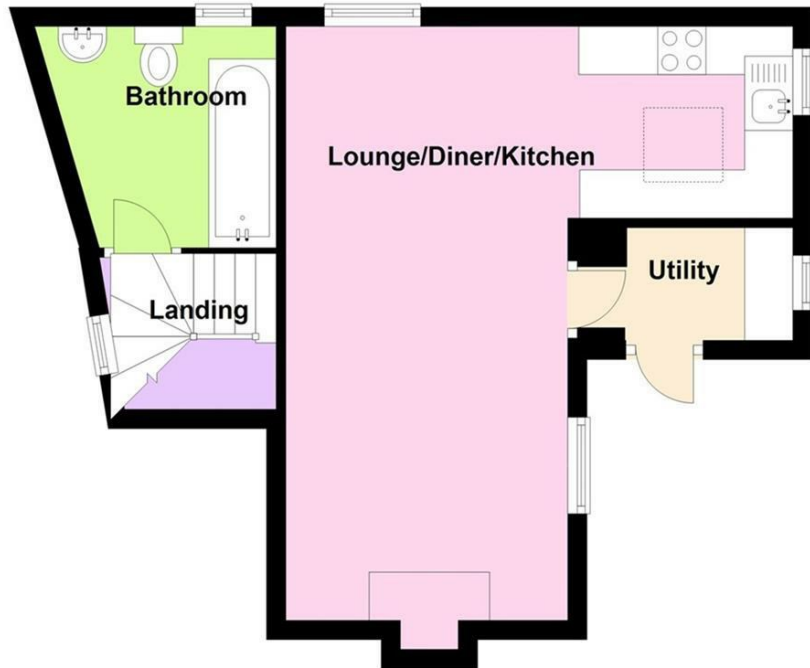
From Cardigan head up the main coast road, over the mini roundabout at Tremain and take the left hand turning by the Gogerddan Arms signposted for Aberporth. As you enter the village turn right onto the Tresaith road. Head into Tresaith, drop down the hill slightly and in the middle of the village turn left on the bend for the beach and Bern Cottage is found immediately on the left-hand side. [///mini.nutrients.delays](https://mini.nutrients.delays)

INFORMATION ABOUT THE AREA:

The seaside village of Tresaith sits along the stunning Ceredigion coastline, just 8 miles north of Cardigan. Well-positioned between Aberporth, Penbryn's National Trust beach, and the well-known village of Llangrannog, it offers a coastal setting with access to some of the area's most scenic spots. The Ceredigion Coastal Path runs through the village, making it a popular stop for walkers exploring the coastline. Sailing events take place throughout the summer, adding to the coastal atmosphere, while the sandy beach provides a setting for relaxing by the sea. A café, village shop, and The Ship Inn pub—serving food throughout the day—offer local conveniences. Cardigan town is within easy reach, providing a range of amenities including shops, supermarkets, banks, and both primary and secondary schools. Please read our Location Guides on our website <https://cardiganbayproperties.co.uk/location-guides-getting-to-know-cardigan-bay/> for more information on what this area has to offer.

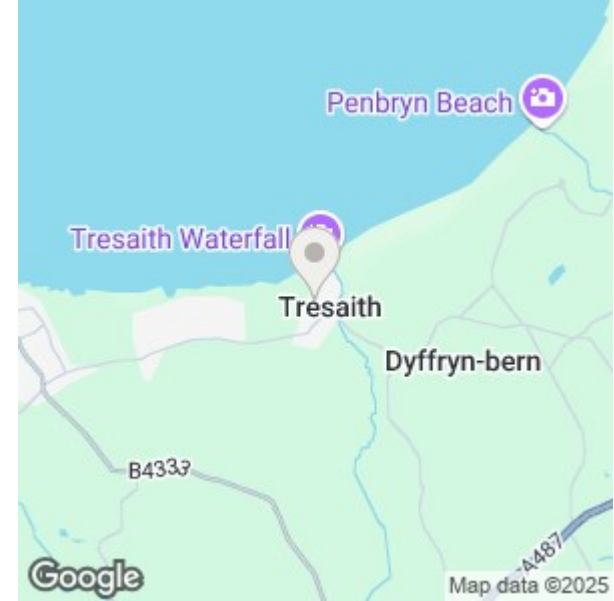
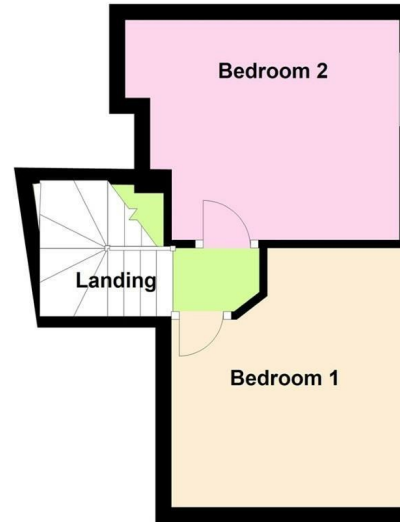


Ground Floor



Floorplans are not to scale and should not be relied upon for measurements etc.
Plan produced using PlanUp.

First Floor



Energy Efficiency Rating

	Current	Potential
Very energy efficient - lower running costs		
(92 plus) A		
(81-91) B		
(69-80) C		73
(55-68) D		
(39-54) E	30	
(21-38) F		
(1-20) G		
Not energy efficient - higher running costs		
England & Wales	EU Directive 2002/91/EC	

Contact Helen on 01239 562 500 or helen@cardiganbayproperties.co.uk to arrange a viewing of this property.

Important notice Cardigan Bay Properties, its clients and any joint agents give notice that 1: They are not authorised to make or give any representations or warranties in relation to the property either here or elsewhere, either on their own behalf or on behalf of their client or otherwise. They assume no responsibility for any statement that may be made in these particulars. These particulars do not form part of any offer or contract and must not be relied upon as statements or representations of fact. 2: Any areas, measurements or distances are approximate. The text, photographs and plans are for guidance only and are not necessarily comprehensive. All photographs are taken using a digital camera with a wide angled camera lens. It should not be assumed that the property has all necessary planning, building regulation or other consents and Cardigan Bay Properties have not tested any services, equipment or facilities. Purchasers must satisfy themselves by inspection or otherwise.

Hafod Y Coed Glynarthen, Llandysul, Ceredigion, SA44 6NX

T. 01239 562 500 | E. info@cardiganbayproperties.co.uk

www.cardiganbayproperties.co.uk