

## 67 Newman Square,

£225,000

2 1 1



3 Union Road, Shirley, Solihull B90 3BT

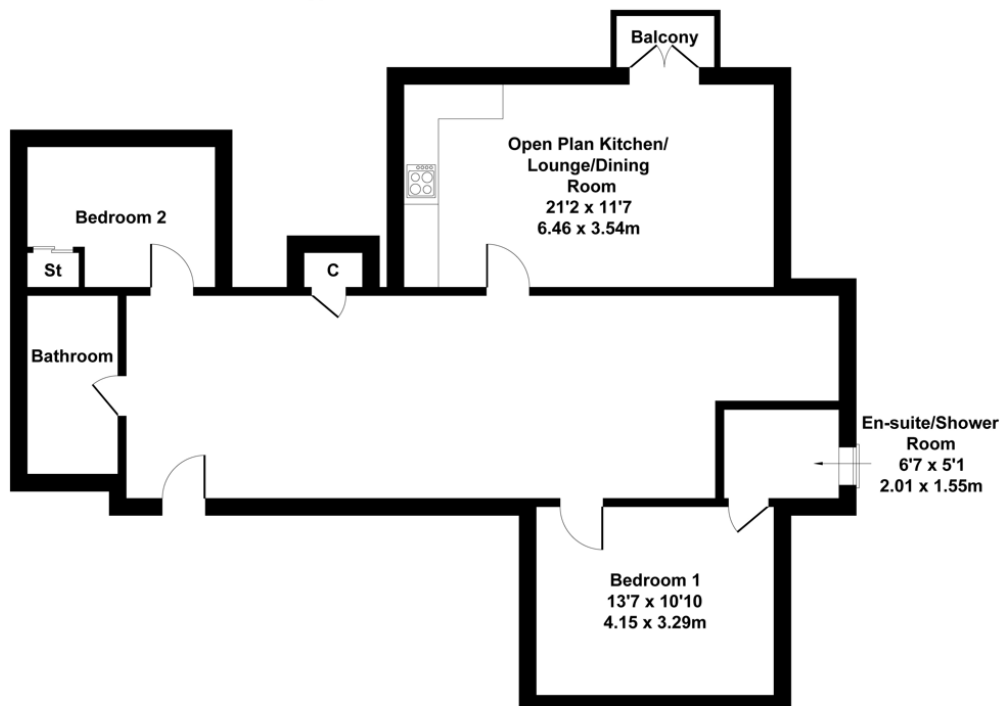
sales • new homes • land • commercial • mortgages • auction

Registered Company in England and Wales. Company No 03591917  
Registered Office: smart New Homes Ltd, 3 Union Road, Shirley, Solihull B90 3BT

- Two allocated parking spaces
- Private balcony off the lounge
- Modern main bathroom and ensuite
- Integrated kitchen appliances
- No ground rent
- Phone intercom entry system
- Two spacious bedrooms
- Excellent storage space
- Convenient Solihull location close to local shops and amenities
- Get in touch today to arrange your viewing

### 67 Newman Square

Approximate Gross Internal Area



Not to Scale. Produced by The Plan Portal 2026  
For Illustrative Purposes Only.

Light and spacious top-floor apartment in a sought-after Solihull location, offering two bedrooms including an ensuite to the main bedroom, private balcony, excellent storage, and two allocated parking spaces. Ideally positioned close to local shops and a welcoming community. Get in touch to arrange a viewing.

3 Union Road, Shirley, Solihull B90 3BT

sales • new homes • land • commercial • mortgages • auction