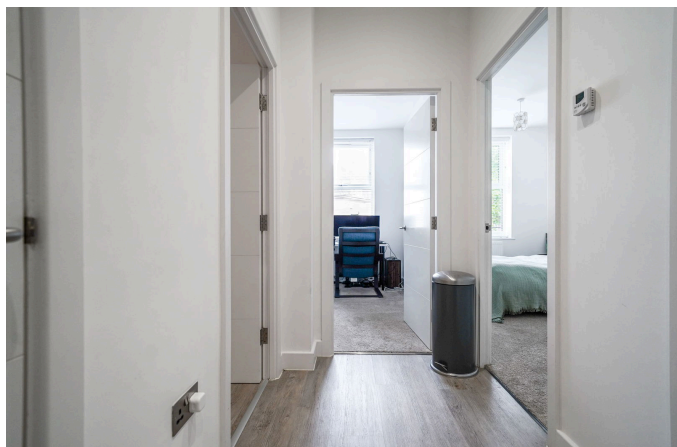


## PRINCES GATE - ROYAL HOUSE PLOT 22, 2 - 6, Homer Road

£285,000

2 1 0



3 Union Road, Shirley, Solihull B90 3BT

sales • new homes • land • commercial • mortgages • auction

Registered Company in England and Wales. Company No 03591917  
Registered Office: smart New Homes Ltd, 3 Union Road, Shirley, Solihull B90 3BT

- Spacious first floor 2 bedroom apartment
- Modern kitchen with integrated Hotpoint fridge/freezer, washer/dryer, dishwasher, and electric hob
- Ample storage throughout
- Secure entry with phone intercom system
- Allocated parking space included
- Bright open-plan kitchen, lounge, and dining area
- Spacious principal bedroom with Juliet balcony
- Versatile second bedroom/study
- Lift access to all floors for added convenience
- Prime location close to Solihull Town Centre, train station, schools, and amenities



Situated in a sought-after development in Solihull, this **stylish and spacious two bedroom first floor apartment** offers contemporary living with the convenience of lift access and one allocated parking space. Perfectly positioned close to a range of local amenities, well-regarded schools, and excellent transport links, the property is just moments from Solihull Town Centre, Solihull Train Station, and a fantastic selection of restaurants, shops, and leisure facilities. Ideal for first-

3 Union Road, Shirley, Solihull B90 3BT

sales • new homes • land • commercial • mortgages • auction

time buyers, professionals, downsizers or investors seeking a low-maintenance home in a prime location.