

11 Lotus House Elm Rd, Blythe Valley, £245,000

 2  1  0

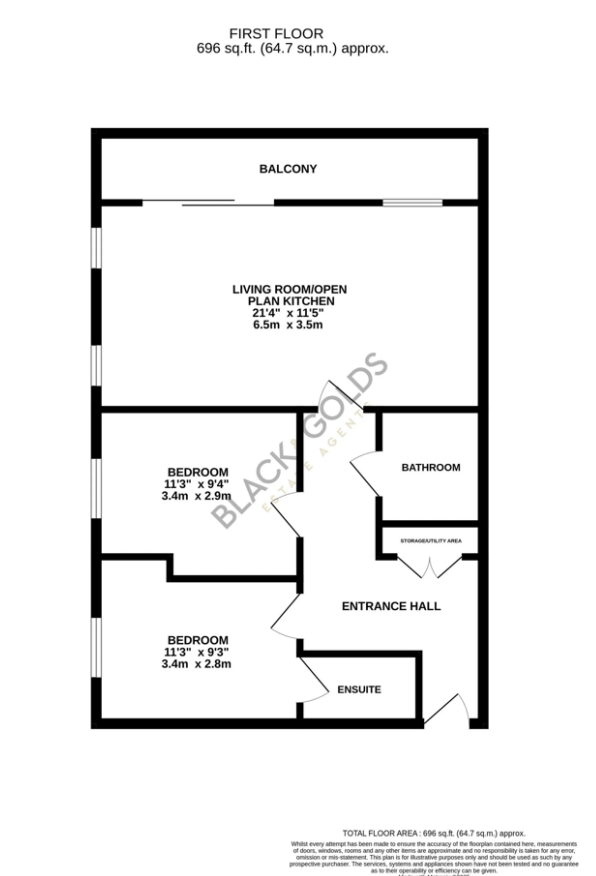


3 Union Road, Shirley, Solihull B90 3BT

sales • new homes • land • commercial • mortgages • auction

Registered Company in England and Wales. Company No 03591917
Registered Office: smart New Homes Ltd, 3 Union Road, Shirley, Solihull B90 3BT

- First Floor apartment
- Open Plan kitchen / diner / lounge
- Allocated two parking spaces
- No Upward Chain - Ready to move into
- Ideal for first time buyers and Investors
- Large Balcony
- 2 double bedrooms
- Situated in Blythe Valley with nearby amenities, transport links, and green spaces.
- Secure intercom entry system
- Modern ensuite in main bedroom



A beautifully maintained two-bedroom apartment, ideally located within the popular Blythe Valley development. This spacious and modern home is offered for sale with no upward chain and is perfect for first-time buyers, downsizers, or investors alike.

3 Union Road, Shirley, Solihull B90 3BT

sales • new homes • land • commercial • mortgages • auction

Registered Company in England and Wales. Company No 03591917
Registered Office: smart New Homes Ltd, 3 Union Road, Shirley, Solihull B90 3BT