

The Elms - The Oxford Plot 288, Shaftmoor Lane, Hall Green

£484,995

🛏 5 🚿 2 🚻 1

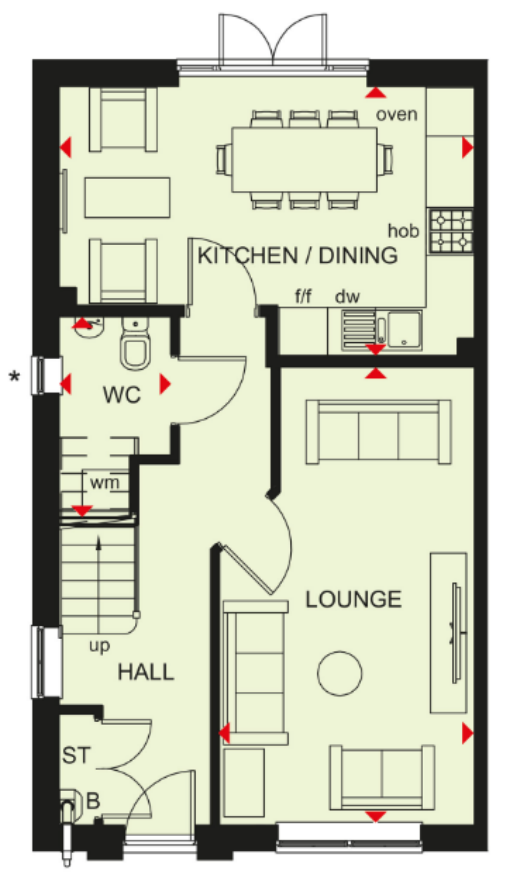


3 Union Road, Shirley, Solihull B90 3BT

sales • new homes • land • commercial • mortgages • auction

Registered Company in England and Wales. Company No 03591917
 Registered Office: smart New Homes Ltd, 3 Union Road, Shirley, Solihull B90 3BT

- 105% Part Exchange available
- Argon Filled Double Glazing
- Highly-efficient Insulation
- Open Plan Kitchen and Dining
- Waste Water Heat Recovery System
- Brand new family home!
- Energy Efficient EPC A/B
- 2 Parking Spaces Plus a Garage
- Photovoltaic Panels
- Improved Ventilation



Welcome to The Elms – Your New Beginning in Hall Green

Step into a bright, spacious semi detached 5 bedroom home designed for modern family living. Enjoy quality time in the open-plan kitchen and dining area, perfect for everyday moments and special memories alike. This stunning property also features a double garage and three

3 Union Road, Shirley, Solihull B90 3BT

sales • new homes • land • commercial • mortgages • auction

dedicated parking spaces, offering comfort and convenience inside and out. Make this beautiful house your forever home.