
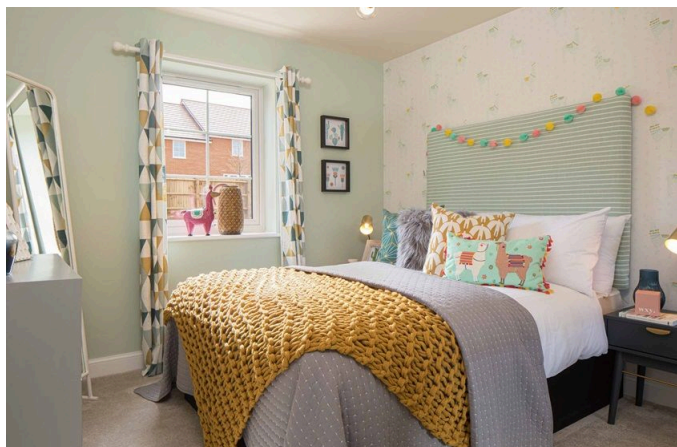
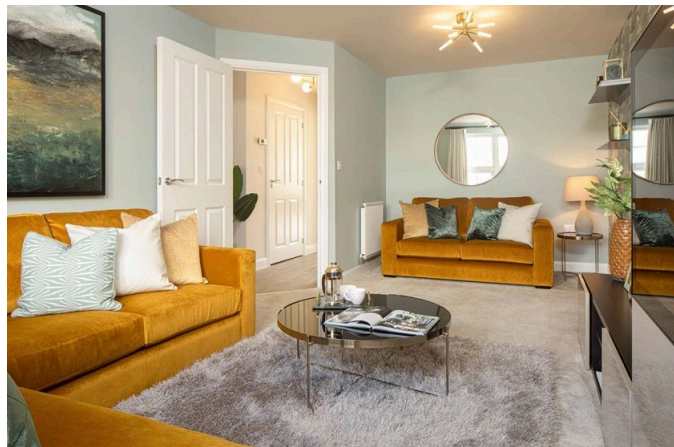


The Elms, The Oxford, Shaftmoor Lane, Hall Green

From £469,995

 5  2  0

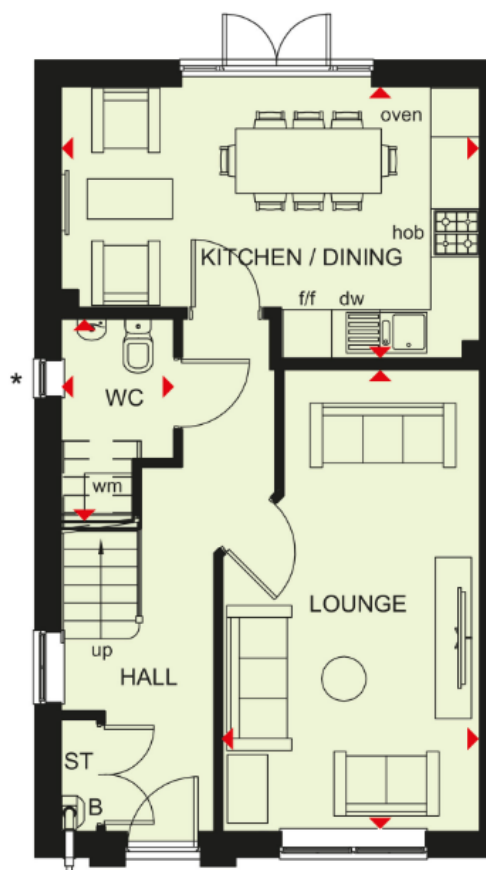


3 Union Road, Shirley, Solihull B90 3BT

sales • new homes • land • commercial • mortgages • auction

Registered Company in England and Wales. Company No 03591917
 Registered Office: smart New Homes Ltd, 3 Union Road, Shirley, Solihull B90 3BT

- PART EXCHANGE and STAMP DUTY PAID ** (subject to T&C's)
- Superb primary and secondary schooling on the doorstep
- Flooring included
- Excellent commuter links adjacent to the A34 and A41
- 10 Year NHBC Warranty
- Five Bedrooms
- Single Garage and Two parking spaces
- Furniture pack included
- Light fittings and blinds included
- Five Star Developer



* PART EXCHANGE AVAILABLE AND **STAMP DUTY PAID SAVING UP TO £11,249 This three story home offers plenty of space for a growing family. The ground floor includes a spacious open plan kitchen diner with French doors leading to the garden. Along with a sizeable lounge for all the family to relax. The first floor features two double and two single bedrooms with a family bathroom. Upstairs on the second floor you will find the main bedroom with a shower room and study. ** T &C's apply

3 Union Road, Shirley, Solihull B90 3BT

sales • new homes • land • commercial • mortgages • auction