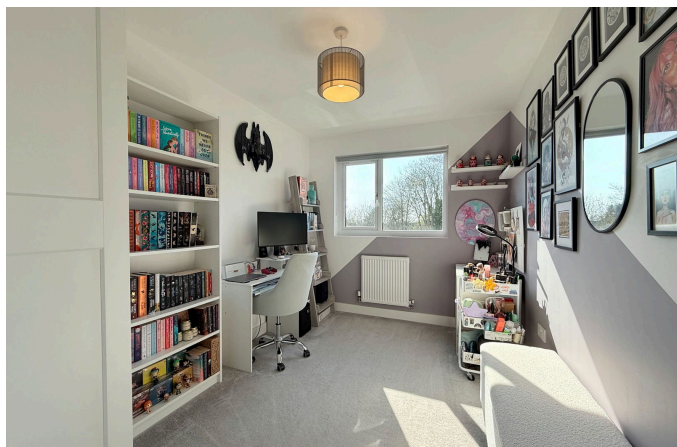


## 7 Loxley Court, Baldwins Lane, Hall Green, B28 0FH

Offers Over £200,000

 2  1  1



3 Union Road, Shirley, Solihull B90 3BT

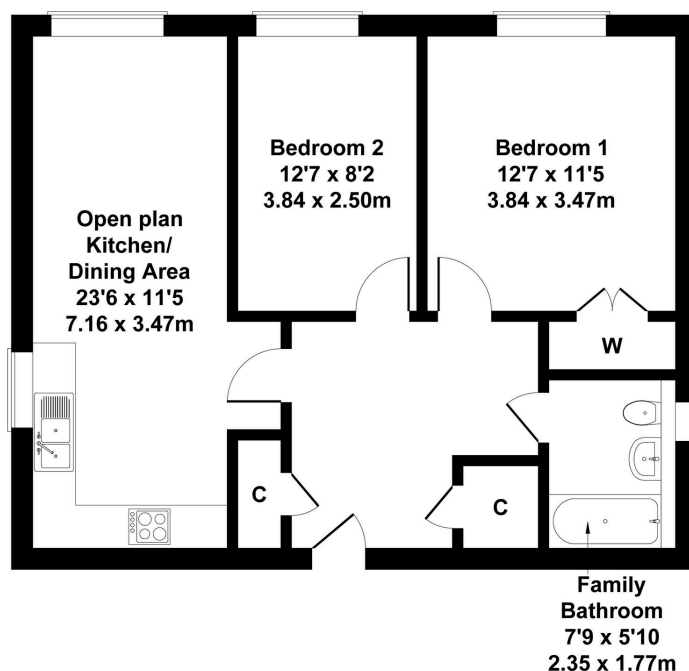
**sales • new homes • land • commercial • mortgages • auction**

Registered Company in England and Wales. Company No 03591917  
Registered Office: smart New Homes Ltd, 3 Union Road, Shirley, Solihull B90 3BT

- Contemporary open plan kitchen / diner / lounge
- Beautiful second floor apartment, situated in Hall Green
- Juliet balcony
- Short Commute to Solihull or Birmingham
- Ample storage space
- Two Spacious Bedrooms
- Allocated parking space
- Video intercom system
- Perfect for first time buyers or investors
- Call Now to book a viewing!

## 7 Loxley Court

Approximate Gross Internal Area  
688 sq ft - 64 sq m



Not to Scale. Produced by The Plan Portal 2025  
**For Illustrative Purposes Only.**

Step into this stunning two bedroom second floor apartment, offering a spacious, light, and airy living environment. Featuring a charming Juliet balcony and allocated parking for one car, this home is perfectly positioned in the heart of Hall Green, close to local shops, amenities, and transport links. Set within a friendly and well established community, it's an ideal choice for first-time buyers, professionals, or anyone looking to enjoy comfortable modern living.

Don't miss out - call us today to arrange your viewing!

3 Union Road, Shirley, Solihull B90 3BT

sales • new homes • land • commercial • mortgages • auction

