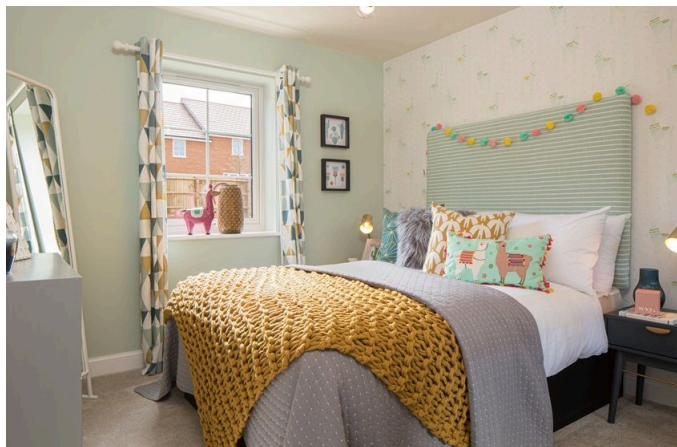
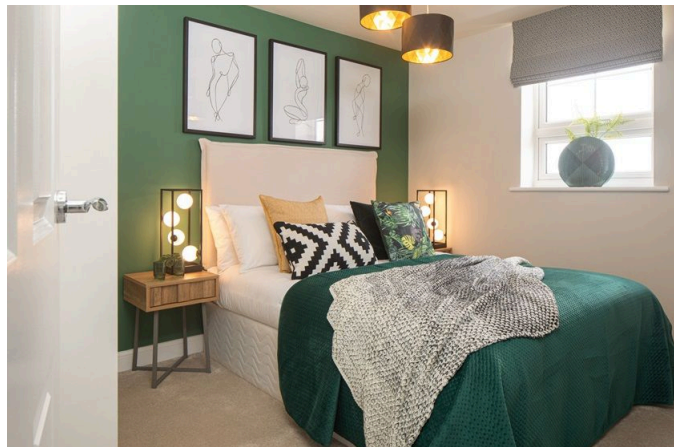


The Elms - The Oxford, Shaftmoor Lane, Hall Green

£489,995

🛏 5 🚗 2 🚲 1



Walk into your new light and spacious home.

Enjoy the open-plan kitchen/Dining room for you and the family. Make memories in your new home.

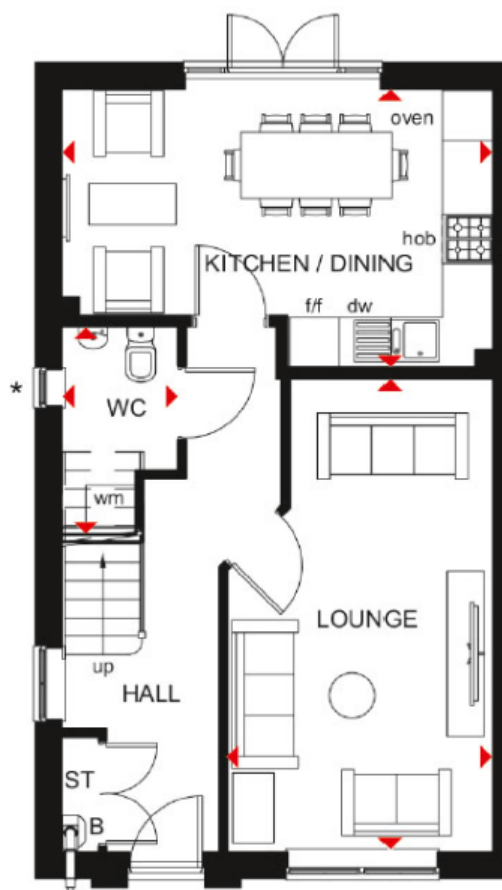
This beautiful Semi-detached 5 bedroom house includes a garage and 2 single parking spaces

3 Union Road, Shirley, Solihull B90 3BT

sales • new homes • land • commercial • mortgages • auction

Registered Company in England and Wales. Company No 03591917
Registered Office: smart New Homes Ltd, 3 Union Road, Shirley, Solihull B90 3BT

- Brand New 5 bedroom family home
- Energy Efficient EPC A/B
- 3 Storey house
- Open Plan Kitchen and Dining
- Waste Water Heat Recovery System
- 105% Part Exchange
- Highly-efficient Insulation
- 2 Parking Spaces Plus a Garage
- Photovoltaic Panels
- Improved Ventilation



3 Union Road, Shirley, Solihull B90 3BT

sales • new homes • land • commercial • mortgages • auction