

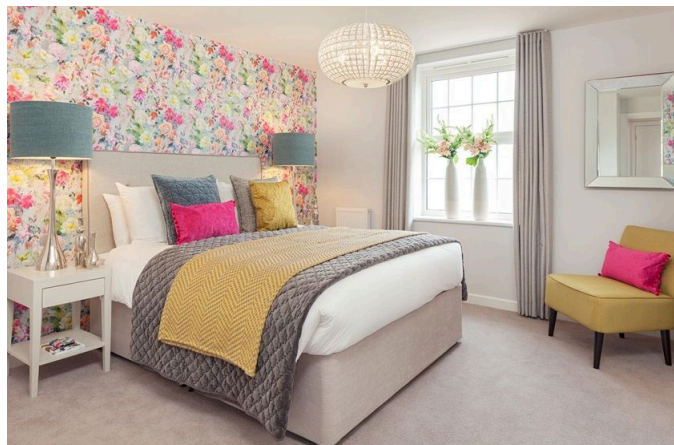


The Elms - The Collaton, Shaftmoor Lane, Hall Green

£407,995

 3  2  1



Walk into your new light and spacious home.

Enjoy the open-plan kitchen/Dining room for you and the family. Make memories in your new home.

This Detached 3 bedroom house includes an ensuite and 2 parking spaces

3 Union Road, Shirley, Solihull B90 3BT

sales • new homes • land • commercial • mortgages • auction

Registered Company in England and Wales. Company No 03591917
Registered Office: smart New Homes Ltd, 3 Union Road, Shirley, Solihull B90 3BT

-
- This floor plan shows a 1000 sq. ft. house with the following layout:
- Family / Dining:** Located at the top, featuring a fireplace, a circular rug, and a dining table with chairs.
 - Kitchen:** Adjacent to the family/dining area, containing a sink, stove (oven/hob), refrigerator (f/r), and a dishwasher (d/w).
 - Study:** Located on the left side, featuring a desk and chair.
 - Hall:** A central hallway connecting the main rooms.
 - Bedrooms (ST):** Two bedrooms are located on the right side, each with a bed and a closet.
 - WC:** A bathroom located between the two bedrooms.
 - Entrance:** A front entrance with a coat closet (C) and a shoe closet (S).