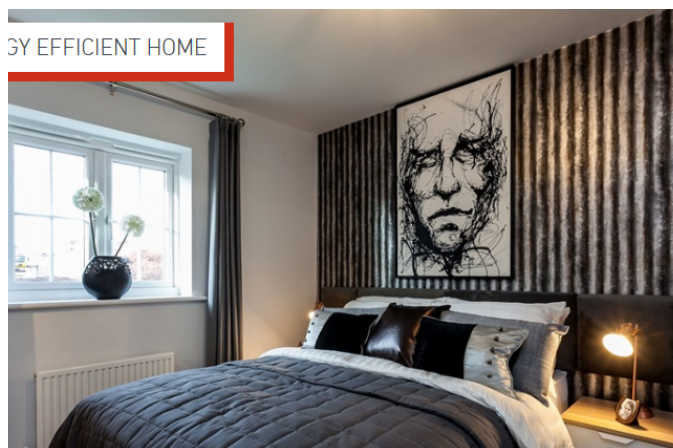


The Elms - The Collaton, Shaftmoor Lane, Hall Green

£389,995

3 2 1



Walk into your new light and spacious home.

Enjoy the open-plan kitchen/Dining room for you and the family. Make memories in your new home.

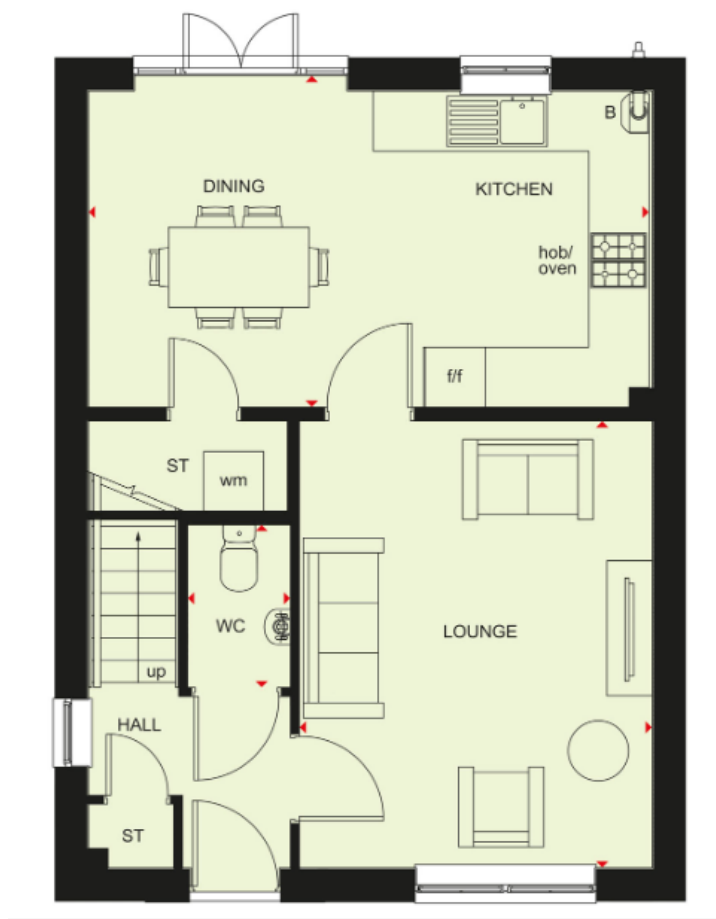
This Detached 3 bedroom house includes an ensuite and 2 parking spaces

3 Union Road, Shirley, Solihull B90 3BT

sales • new homes • land • commercial • mortgages • auction

Registered Company in England and Wales. Company No 03591917
Registered Office: smart New Homes Ltd, 3 Union Road, Shirley, Solihull B90 3BT

- Ready for Spring 2025!
- Energy Efficient EPC A/B
- 2 Parking Spaces
- Upgraded Kitchen
- Waste Water Heat Recovery System
- Brand New Family Home
- 105% Part exchange available
- Open Plan Kitchen and Dining
- Argon Filled Double Glazing
- Improved Ventilation



3 Union Road, Shirley, Solihull B90 3BT

sales • new homes • land • commercial • mortgages • auction