



smarthomes

Broadoaks

Streetsbrook Road, Solihull

- A Beautifully Presented Two Bedroom Apartment
- Open Plan Lounge/Kitchen/Diner
- En-Suite Shower Room & Guest Bathroom
- Allocated Parking Space

£285,000

Current EPC Rating - C
Current Council Tax Band - D





Property Description

A beautifully presented and recently constructed first floor apartment being situated in a most convenient location a short walk from Solihull Town Centre. Offering accommodation comprising an open plan lounge/kitchen/diner, master bedroom with en-suite shower room, second bedroom, guest bathroom and allocated parking space

Solihull is situated in the heart of England and is considered to be one of the most highly sought after residential areas in the country boasting a range of local amenities including excellent schools, colleges, parks, restaurants, bars and an excellent variety of shopping centres including Touchwood shopping centre and the new Resorts World. Solihull has convenient road networks linking the M42, M6, M40, M1 and M5 giving easy access to the NEC Arena, Birmingham International Airport and Railway Station



Rooms & Measurements

Open Plan Lounge/Kitchen/Diner - 6.58m x 3.89m
(21'7" x 12'9")

Bedroom One - 3.68m min x 2.34m (12'1" min x 7'8")

En-Suite Shower Room - 1.98m x 1.91m (6'6" x 6'3")

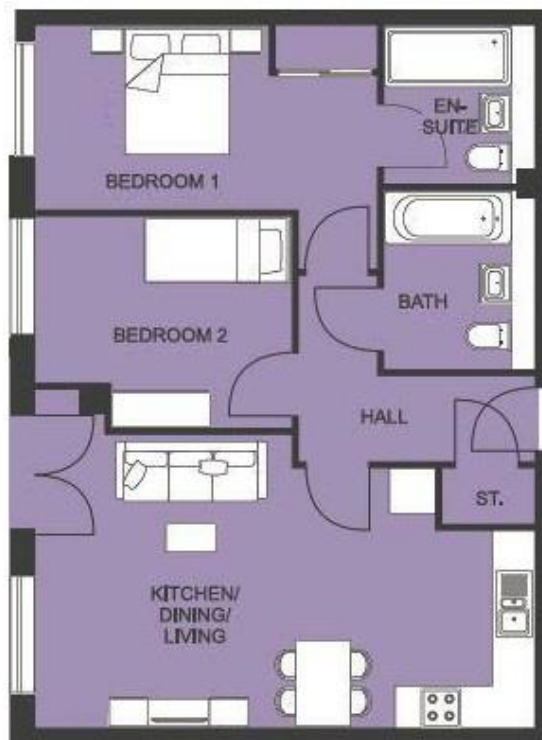
Bedroom Two - 3.4m x 2.13m (11'2" x 7'0")

Guest Bathroom - 2.29m x 1.91m (7'6" x 6'3")

Tenure

We are advised by the vendor that the property is leasehold with approx. 245 years remaining on the lease, a service charge of approx. £1,500 per annum and a peppercorn ground rent. We would advise all interested parties to obtain verification through their own solicitor or legal representative.

EPC supplied by Vendor. Current council tax band – C



316 Stratford Road
 Shirley
 Solihull
 B90 3DN

www.smart-homes.co.uk
 0121 744 4144

Agents Note: Whilst every care has been taken to prepare these particulars, they are for guidance purposes only. We believe all information to be correct from the day of marketing however, we advise and recommend that your conveyancer and or surveyor verifies all information supplied. All measurements are approximate and are for general guidance purposes only and whilst every care has been taken to ensure their accuracy, they should not be relied upon and potential buyers are advised to recheck the measurements.