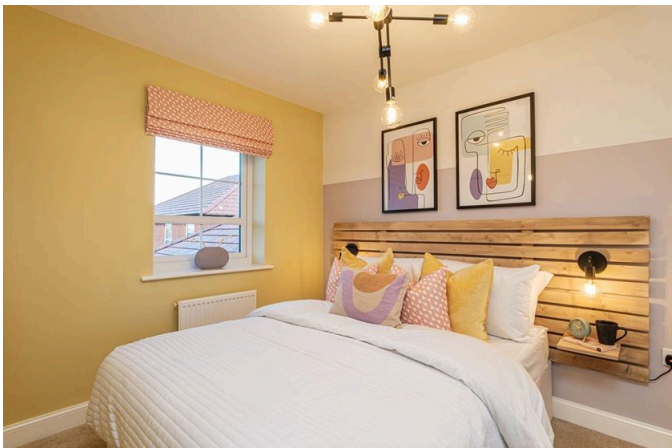


The Elms - The Ellerton, Shaftmoor Lane, Hall Green

£330,995

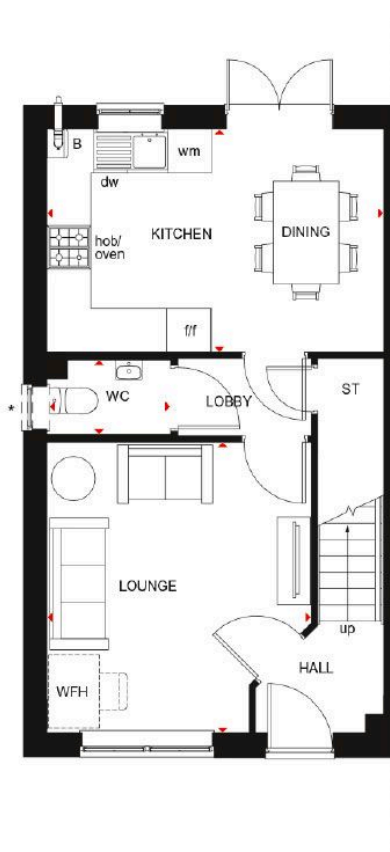
3 2 1



3 Union Road, Shirley, Solihull B90 3BT

sales • new homes • land • commercial • mortgages • auction

- Brand New Family Home
- Five Star Developer NHBC
- Master Bedroom with En-Suite
- Dual Aspect Lounge
- Contribution towards flooring - worth £3,699
- Energy Efficient EPC A/B
- Open Plan Kitchen and Dining
- £18,499 Deposit Boost
- Two parking spaces
- Book your appointment today



Walk into your new light and spacious home.

Enjoy the open-plan kitchen/Dining room for you and the family. Make memories in your new home.

This semi-detached 3 bedroom house includes 2 parking spaces with a garage for your cars and storage.

3 Union Road, Shirley, Solihull B90 3BT

sales • new homes • land • commercial • mortgages • auction



smart-homes.co.uk
0121 744 4144 opt 3
newhomes@smart-homes.co.uk

3 Union Road, Shirley, Solihull B90 3BT

sales • new homes • land • commercial • mortgages • auction

Registered Company in England and Wales. Company No 03591917
Registered Office: smart New Homes Ltd, 3 Union Road, Shirley, Solihull B90 3BT