



## Apt, Fleur De Lis, Church Street

Guide Price £200,000

Wantage

**Simpsons**

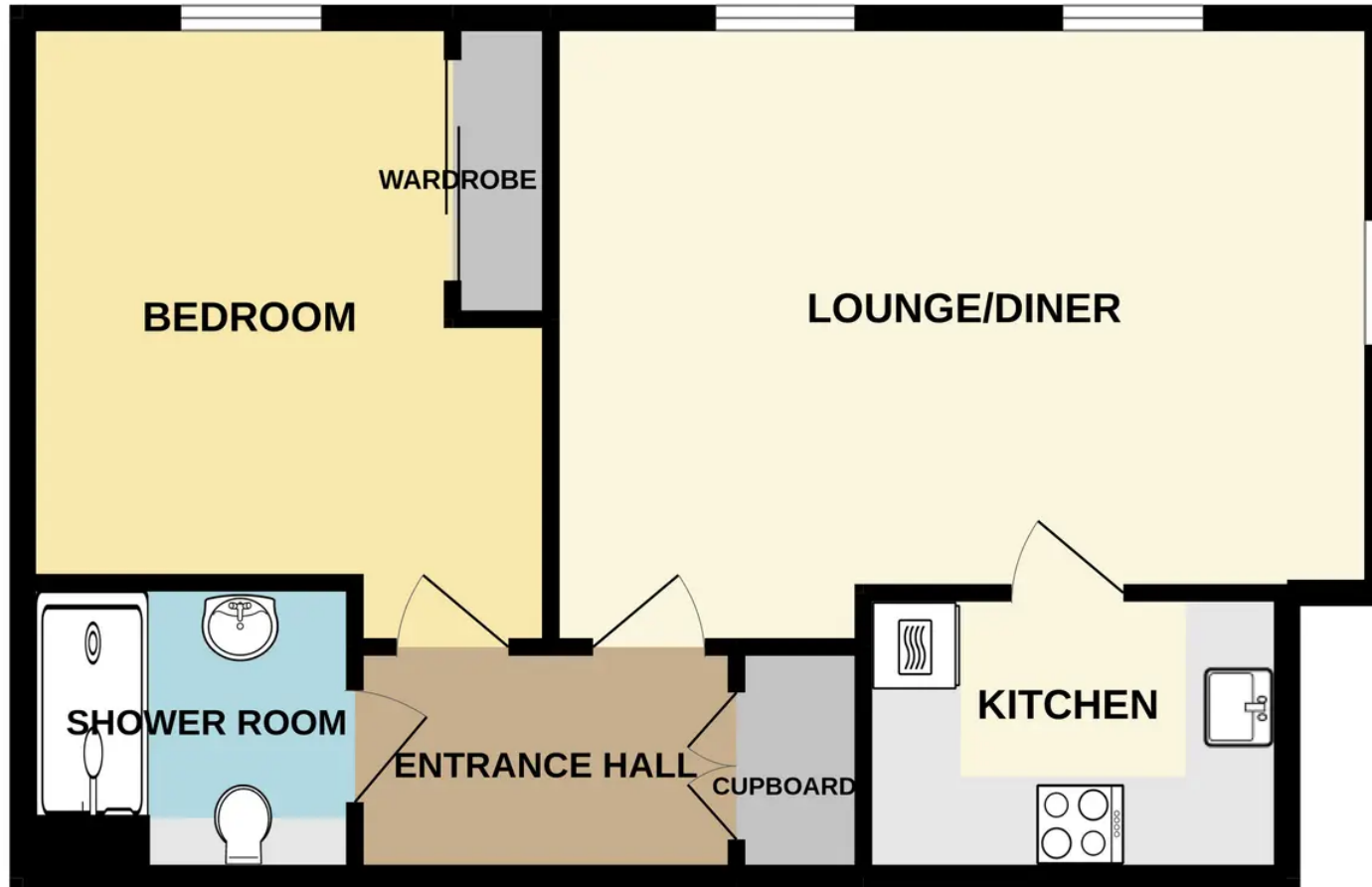
The Proactive Agent



SCAN THE  
QR CODE  
FOR DETAILS



## SECOND FLOOR APARTMENT



Whilst every attempt has been made to ensure the accuracy of the floorplan contained here, measurements of doors, windows, rooms and any other items are approximate and no responsibility is taken for any error, omission or mis-statement. This plan is for illustrative purposes only and should be used as such by any prospective purchaser. The services, systems and appliances shown have not been tested and no guarantee as to their operability or efficiency can be given.  
Made with Metropix ©2022

# Apartment

## Fleur De Lis, Wantage

A well presented one bedroom top floor apartment located in the centre of the desirable market town of Wantage.

Council Tax band: B

Tenure: Leasehold

- Spacious top floor apartment in luxury later living community in Wantage
- Lifts to all levels
- Renaissance homeowners enjoy no exit fees
- On-site Lifehost who puts all their energy into the community
- Pets are welcome
- On-site amenities include an owners' lounge, social kitchen and gardens
- Guest suite available for family and friends
- Permit available for on-site secure parking (at additional cost)
- Annual Service Charge £3759.00, Ground Rent £525 per year



SCAN THE  
QR CODE  
**TO BOOK**  
YOUR VIEWING



