



Kingside, Grove

Guide Price **£380,000**

Wantage

Simpsons

The Proactive Agent



SCAN THE
QR CODE
FOR DETAILS





Kingside, OX12

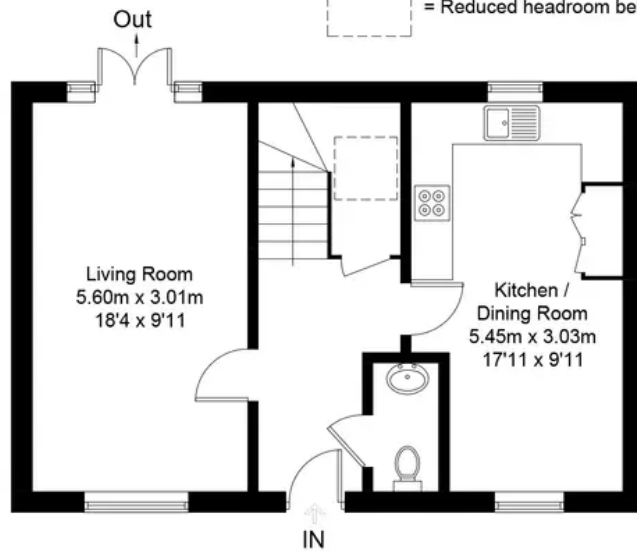
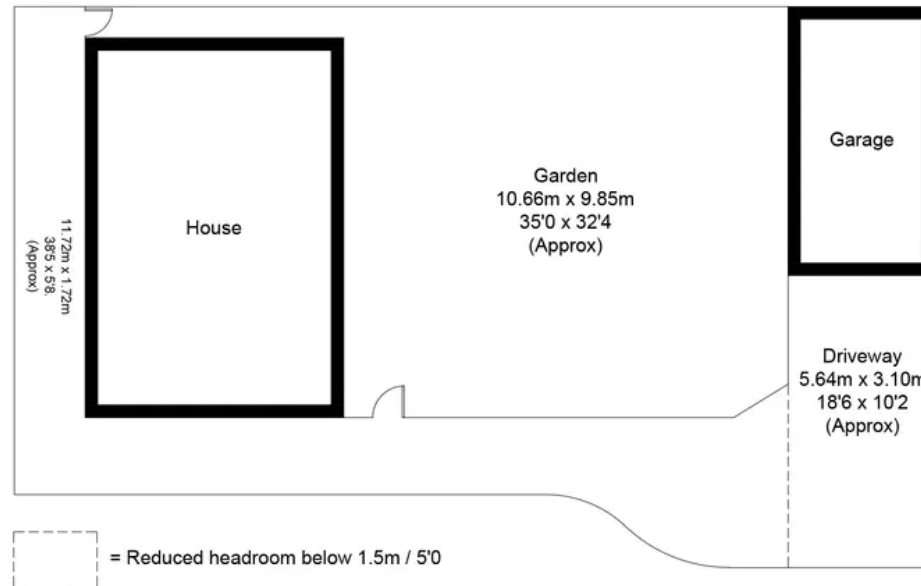
Approximate Gross Internal Area = 95.5 sq m / 1028 sq ft

Garage = 17.7 sq m / 191 sq ft

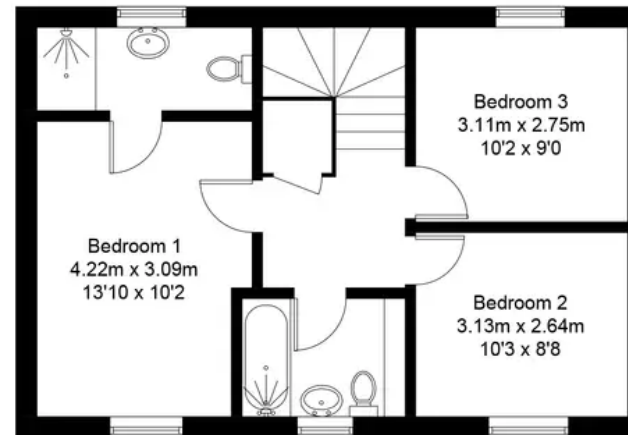
Total = 113.2 sq m / 1219 sq ft

Garden / Driveway Area = 192.0 sq m / 2066 sq ft

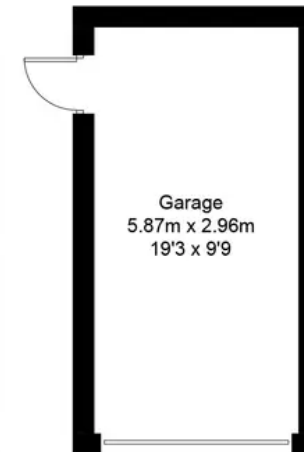
For identification only - Not to scale



Ground Floor



First Floor



(Not Shown In Actual Location / Orientation)

Kingside

Grove, Wantage

A beautifully presented three bedroom detached home within close proximity of local amenities and with off-street parking and a garage.

Council Tax band: D

Tenure: Freehold

- Garage And Off Street Parking
- Beautifully Presented Three Bedroom Detached Home
- Close To Local Amenities
- Landscaped Private Rear Garden



SCAN THE
QR CODE
TO BOOK
YOUR VIEWING



