



Charlton Village Road, Charlton

Guide Price £560,000

Wantage

**Simpsons**

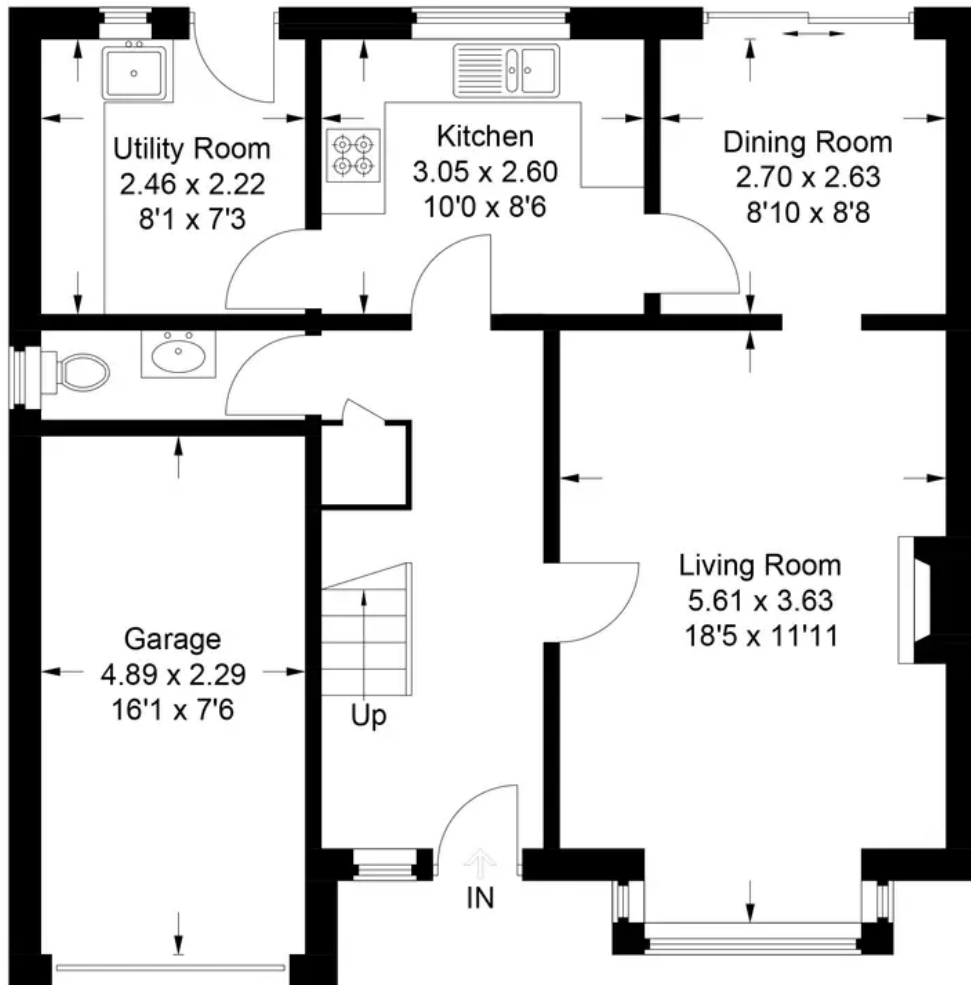
The Proactive Agent



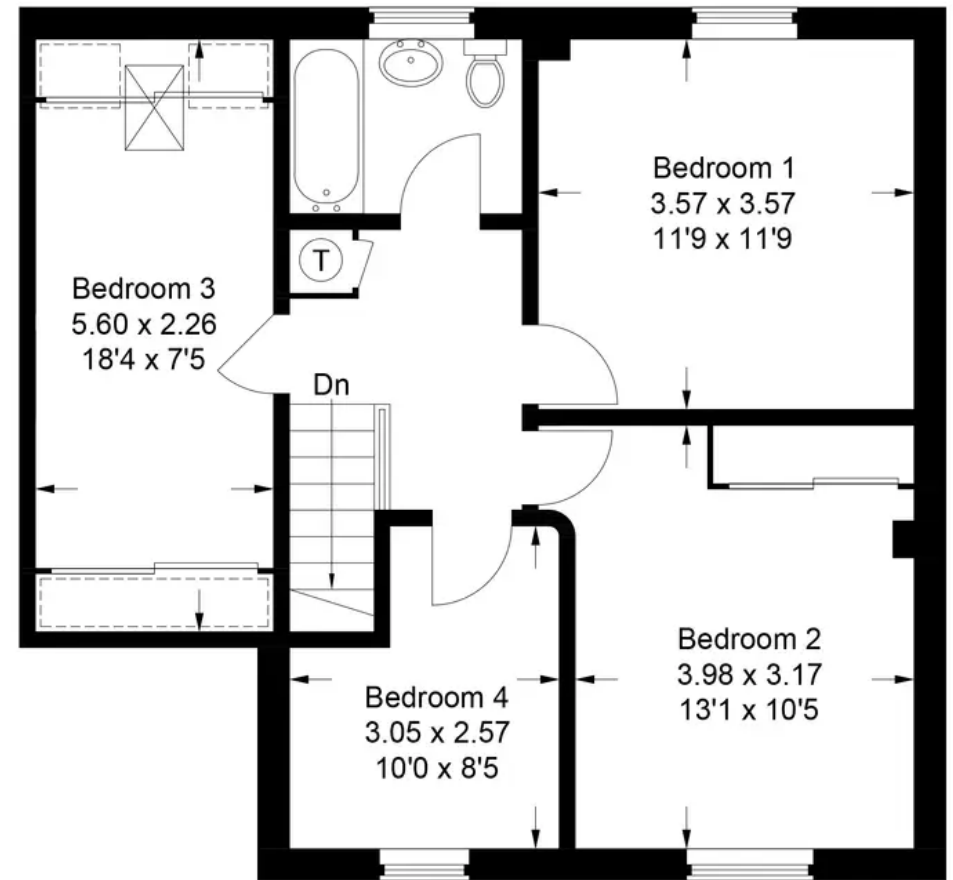
SCAN THE  
QR CODE  
FOR DETAILS



Approximate Gross Internal Area  
Ground Floor = 56.7 sq m / 609 sq ft  
First Floor = 58.6 sq m / 631 sq ft  
Garage = 12.5 sq m / 135 sq ft  
Total = 127.8 sq m / 1,375 sq ft



**Ground Floor**



**First Floor**

This plan is for layout guidance only. Not drawn to scale unless stated. Windows and door openings are approximate. Whilst every care is taken in the preparation of this plan, please check all dimensions, shapes and compass bearings before making any decisions reliant upon them.

# Charlton Village Road

Charlton, Wantage

A beautifully presented four bedroom detached family home on this very popular no through road within catchment for Charlton Primary School.

Tenure: Freehold

- Single garage
- Scope to extend (STPP)
- Large west facing garden
- Catchment for Charlton Primary school
- No through road
- Fully insulated garden office



SCAN THE  
QR CODE  
**TO BOOK**  
YOUR VIEWING



