



Bluebell Lane, Didcot

Guide Price **£395,000**

Didcot

Simpsons

The Proactive Agent



SCAN THE
QR CODE
FOR DETAILS





Bluebell Lane, OX11

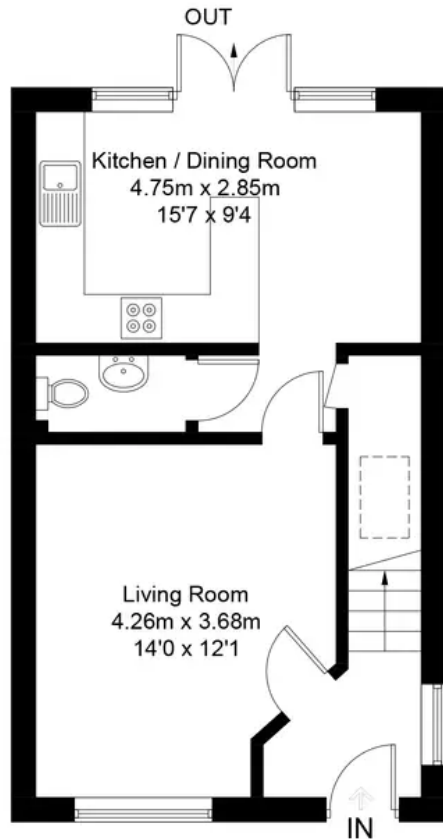
Approximate Gross Internal Area = 80.6 sq m / 867 sq ft

Garage = 19.5 sq m / 210 sq ft

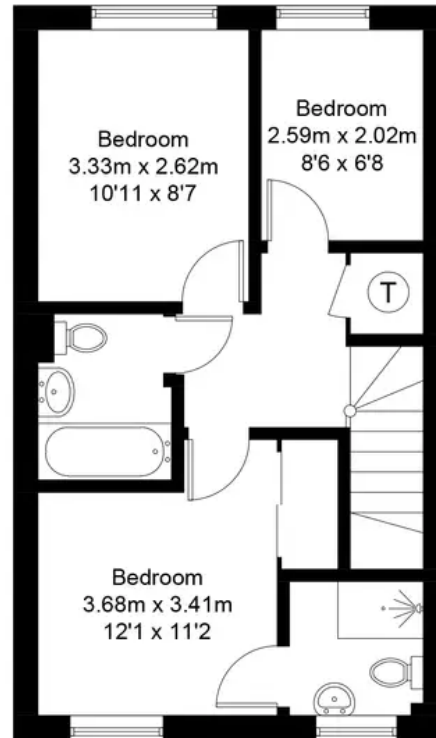
Total = 100.1 sq m / 1077 sq ft

External Area = 151.1 sq m / 1626 sq ft

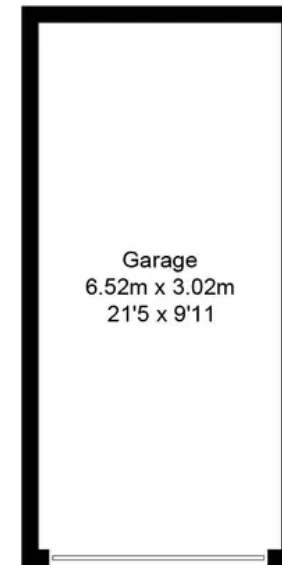
For identification only - Not to scale



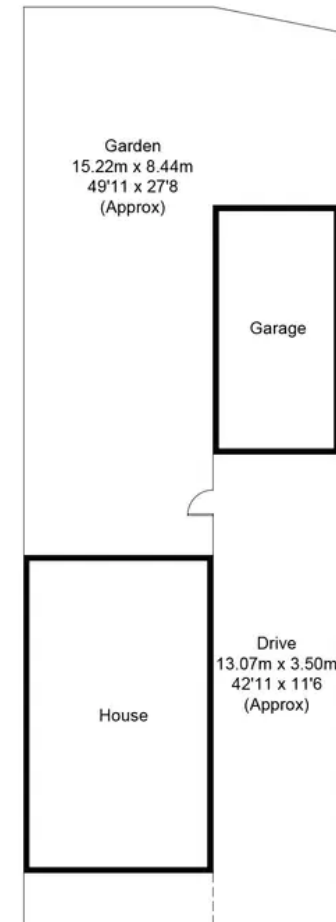
Ground Floor



First Floor



(Not Shown In Actual
Location / Orientation)



Site Plan

Floor plan produced in accordance with RICS Property Measurement Standards.

© Mortimer Photography. Produced for Simpsons.

Unauthorised reproduction prohibited. (ID1000296)

Bluebell Lane

Didcot, Didcot

A beautifully presented four bedroom home with a private and south facing garden located in the Great Western Park.

- Close to local amenities, shops and schools
- Built less than 5 years ago and very well maintained
- Private and sunny garden
- Single garage and driveway parking



SCAN THE
QR CODE
TO BOOK
YOUR VIEWING



