



Martin Way, Grove

Guide Price £440,000

Wantage

Simpsons

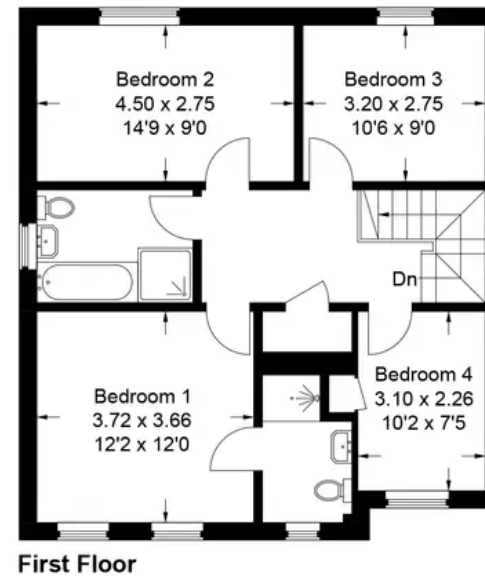
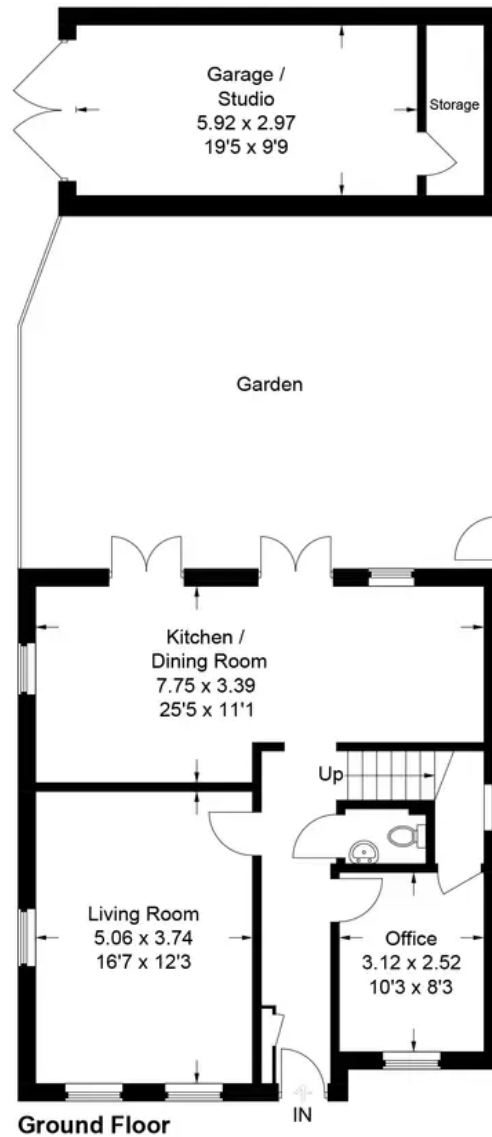
The Proactive Agent



SCAN THE
QR CODE
FOR DETAILS



Approximate Gross Internal Area
Ground Floor = 65.7 sq m / 707 sq ft
First Floor = 65.4 sq m / 704 sq ft
Garage / Studio / Storage = 21.2 sq m / 228 sq ft
Total = 152.3 sq m / 1,639 sq ft



This plan is for layout guidance only. Not drawn to scale unless stated. Windows and door openings are approximate. Whilst every care is taken in the preparation of this plan, please check all dimensions, shapes and compass bearings before making any decisions reliant upon them.

Martin Way

Grove, Wantage

A well presented four bedroom detached home, built just over 2 years ago by Charles Church and still under warrantee.

Council Tax band: F

Tenure: Freehold

- Detached garage converted into a studio
- Solar panels
- West facing garden
- Still under warrantee



SCAN THE
QR CODE
TO BOOK
YOUR VIEWING



