



LANDMARK

RESIDENTIAL



Hume Avenue, Tilbury, RM18 8DX

£2,200

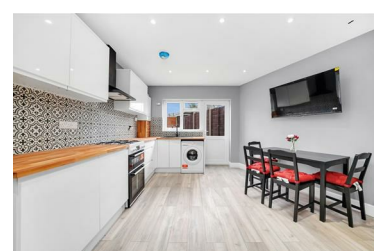


OPEN DAY: WEDNESDAY 9TH APRIL

Landmark Residential is delighted to present this newly renovated 5-bedroom, 2-bathroom family home in Tilbury.

This well-presented property offers:

- Two bedrooms and a bathroom on the ground floor
- Three additional bedrooms and a modern bathroom on the first floor
- A spacious entrance hall, fitted kitchen, and access to a private garden
- Parking at the front of the property, plus additional street parking



18th Floor, 40 Bank Street, London, E14 5NR

Tel: 0203 195 7610 Email: info@landmarkresidential.co.uk <https://www.landmarkresidential.co.uk>