



* £425,000 - £475,000 * OFF-STREET PARKING * WEST-FACING GARDEN * WALK TO WESTCLIFF AND PRITTLEWELL STATIONS * LARGE ROOMS THROUGHOUT * DETACHED WITH CHARACTERFUL PERIOD FEATURES * NEAR GRAMMAR SCHOOLS / HOSPITAL / AMENITIES * NO ONWARD CHAIN * This spacious and characterful detached property with parking offers accommodation over two floors and is comprised of; driveway for one vehicle plus an additional over the dropped curb, wide side access to the sunny west-facing garden, an entrance hall with stairs to the first floor, two bedrooms on the ground floor and two on the upper floor, a bay-fronted lounge, a kitchen-diner to the rear and a bathroom with separate WC on the first floor. The location offers very quick access to a range of amenities and bus links, as well as being a walk to both Westcliff and Prittlewell stations, giving London commuters the option of both train lines. The Hospital and grammar schools are also in close proximity and the home is offered with no onward chain and available to view now!

- West-facing rear garden
- Four well-proportioned bedrooms
- Open-plan kitchen/diner and a bay fronted reception room
- Double fronted detached property
- Walk to Westcliff and Prittlewell stations
- Off-street parking
- Period features and ornate fireplaces throughout
- Walk to the grammar schools
- Amenities and bus links at the top of the road
- No onward chain

Westcliff Park Drive

Westcliff-On-Sea

£425,000

Price Guide



Westcliff Park Drive



Frontage

Space for parking, retaining garden wall, front lawn, tiled overhanging porch with a door leading to:

Entrance Hall

Two windows to front aspect, two double radiators, plate rail, picture rail, skirting and wood effect laminate flooring.

Lounge

15'5 x 12'2

UPVC double glazed bay fronted window, feature fireplace, radiator, picture rail, skirting and wood effect laminate flooring.

Diner

12'2 x 10'9

UPVC double glazed window to side aspect, wide opening through to kitchen, picture rail, radiator, skirting and wooden flooring.

Kitchen

13'9 x 7'5

Three UPVC double glazed leadlight windows to rear aspect and UPVC double French doors for garden access, a mixture of white and grey kitchen units both wall-mounted and base level comprising; stainless steel sink with drainer and mixer tap, breakfast bar, hob with extractor over, integrated oven, wood effect laminate worktops and tiled splashbacks, radiator, skirting and tile effect lino flooring.

Bedroom One

15'5 x 12'3

UPVC double glazed bay fronted window, feature fireplace, picture rail, radiator, skirting and carpet.

Bedroom Two

13'1' x 12'2

Two UPVC double glazed windows to front aspect, feature fireplace, radiator, skirting and wood effect laminate flooring.

Bedroom Three

10'10 x 10'6

UPVC double glazed window to side aspect, picture rail, radiator, skirting and carpet.

Bedroom Four

11'10 x 7'10

Double glazed velux window to side aspect, eaves storage, radiator, skirting and carpet.

Bathroom

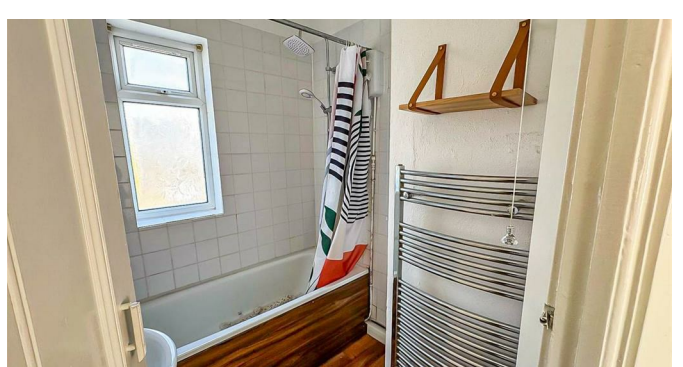
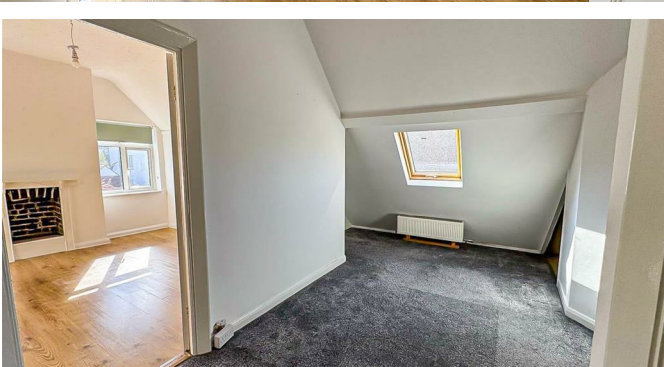
UPVC obscured double glazed window, bath with shower over, pedestal wash basin, chrome towel radiator, wall tiling and wood effect flooring.

W/C

UPVC obscured double glazed window, WC, wall paneling, skirting and tile effect flooring.

West-Facing Garden

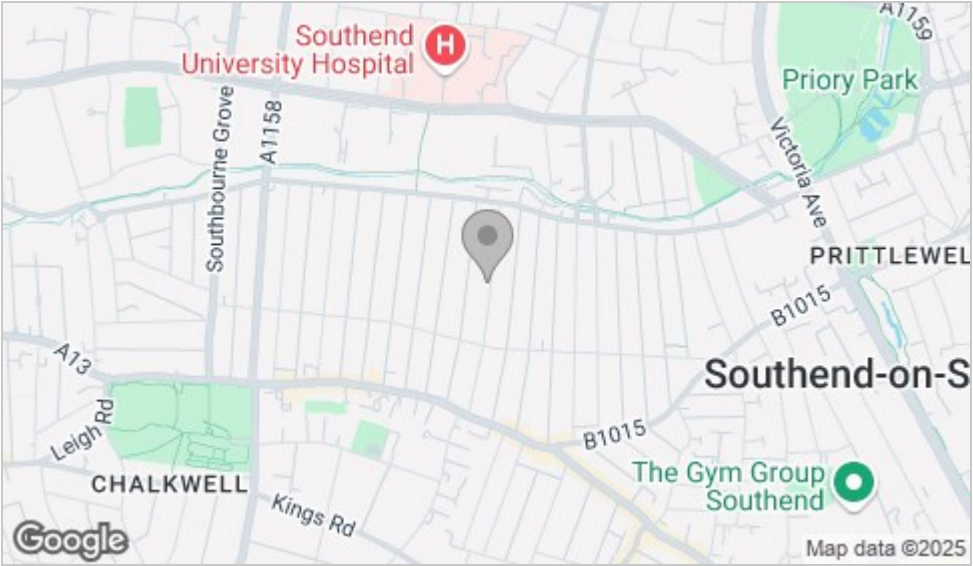
Paved patio, hardstanding courtyard/storage area, wide side access, lawn, planting, fencing.



Floor Plan



Area Map



Viewing

Please contact our Leigh-on-Sea Office on 01702 887 496 if you wish to arrange a viewing appointment for this property or require further information.

These particulars, whilst believed to be accurate are set out as a general outline only for guidance and do not constitute any part of an offer or contract. Intending purchasers should not rely on them as statements of representation of fact, but must satisfy themselves by inspection or otherwise as to their accuracy. No person in this firms employment has the authority to make or give any representation or warranty in respect of the property.

1336 London Road, Leigh-on-Sea, Essex, SS9 2UH

Office: 01702 887 496 los@bearestateagents.co.uk <http://www.bearestateagents.co.uk/>

Energy Efficiency Graph

