



* £450,000- £500,000 * PARKING TO SIDE * TWO POSSIBLE ENTRANCES * TWO KITCHENS AND BATHROOMS * LARGE GARDEN * LARGE BALCONY * NO ONWARD CHAIN * This gargantuan property has accommodation spread across three floors, with two possible entrances and a large garden and first floor sun terrace. The property is comprised of; eight possible bedrooms (see floorplan), an additional two reception rooms that lead onto the two kitchens on the ground and first floors, two four-piece bathrooms on the ground and first floors, a sun terrace with second entrance/exit, a large rear garden with side access off-street parking to the side. The property is equidistance to both Westcliff and Prittlewell Stations offering both lines to London for commuters and the grammar schools are only a walk away. A range of amenities and bus links are at the top of the road, the property is available to view now and is offered with no onward chain!

- No onward chain
- All double bedrooms
- Two bathrooms
- Large balcony/roof terrace
- Walk to both Westcliff and Prittlewell Stations for London commuters
- Kitchen and separate utility room
- Multiple reception rooms and study
- Huge accommodation spread across three floors with massive potential

Silverdale Avenue

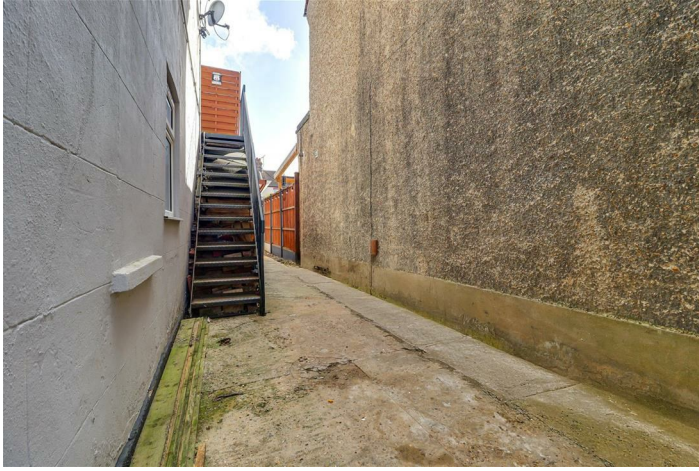
Westcliff-On-Sea

£450,000

Price Guide



Silverdale Avenue



Two Entrances

Two possible entrances, one to the front which gives way to the entrance hall, and one down the sideways which leads up a steel staircase to the sun terrace/rear entrance.

Bedroom One

16'9" × 14'0"

Bedroom Two

16'9" × 14'0"

Bedroom Three

13'10" × 9'10"

Bedroom Four

13'10" × 9'10"

Bedroom Five

11'7" × 9'10"

Bedroom Six

13'1" × 9'11"

Bedroom Seven

12'0" × 9'7"

Bedroom Eight

9'0" × 7'5"

Ground Floor Reception Room

11'7" × 10'5"

First Floor Reception Room

11'6" × 3'9"

Ground Floor Kitchen

11'3" × 6'6"

Shaker style kitchen units, both wall-mounted

and base level with sink, cooker and oven with a rear door to garden.

First Floor Kitchen

10'9" × 7'2"

Gloss kitchen units, both wall-mounted and base level with sink, cooker and oven.

Ground Floor Shower Room

Walk-in shower, separate bath, W/C, wash basin.

First Floor Bathroom

Corner shower cubicle, separate bath, W/C, wash basin.

Sun Terrace/Balcony

Paved with a steel staircase down to the ground floor side entrance and garden. Could be used as a separate entrance.

Garden

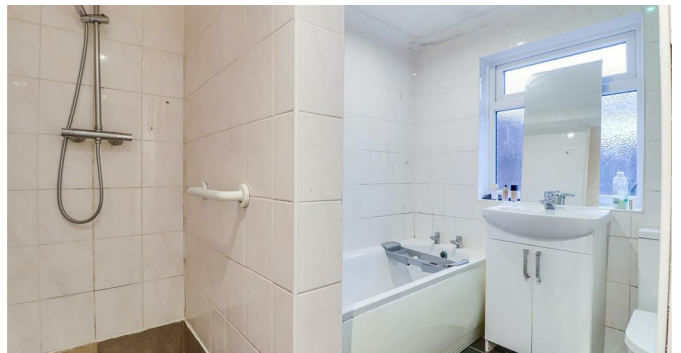
Commences with a covered paved patio with the remainder laid to lawn, with side access to the front of the property and a steel staircase rising to first floor sun terrace - this could be a separate entrance.

Agents Notes

Completely rewired three years ago with new separate consumer units for upstairs and downstairs.

Outside consumer units for PIR security lighting and outside plug sockets, with a secondary consumer unit ready for a cable to be run to the rear of the garden for a potential summer house/office.

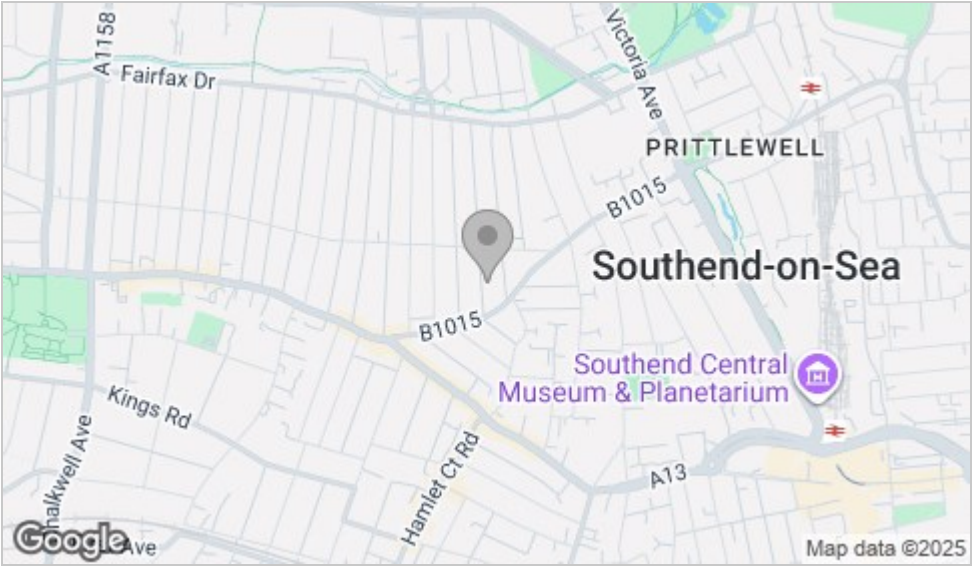
New boiler fitted in recent years and has just been serviced.



Floor Plan



Area Map



Viewing

Please contact our Leigh-on-Sea Office on 01702 887 496 if you wish to arrange a viewing appointment for this property or require further information.

These particulars, whilst believed to be accurate are set out as a general outline only for guidance and do not constitute any part of an offer or contract. Intending purchasers should not rely on them as statements of representation of fact, but must satisfy themselves by inspection or otherwise as to their accuracy. No person in this firm's employment has the authority to make or give any representation or warranty in respect of the property.

1336 London Road, Leigh-on-Sea, Essex, SS9 2UH

Office: 01702 887 496 los@bearestateagents.co.uk <http://www.bearestateagents.co.uk/>

Energy Efficiency Graph

