

# bear

*Estate Agents*

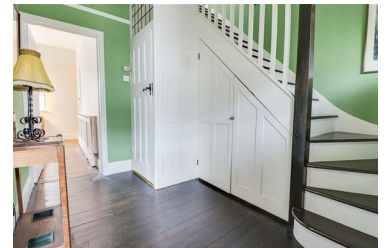


## Southbourne Grove, Westcliff-On-Sea Price Guide £500,000



\* £500,000- £550,000 \* Nestled in the sought-after Southbourne Grove of Westcliff-on-Sea, this charming detached house offers a perfect blend of traditional elegance and modern comfort. Boasting three bedrooms and two reception rooms, this property is ideal for a growing family or those who love to entertain. Upon arrival, you are greeted with ample parking leading to the side of the house, ensuring convenience for you and your guests. The two reception rooms, with their double doors, provide the flexibility of creating an open plan layout, perfect for hosting gatherings or simply enjoying a cozy night in. One of the highlights of this property is the spacious boarded and plastered out loft area, offering endless possibilities for storage or conversion. Additionally, the downstairs WC adds a touch of convenience to everyday living. The conservatory leads out to a secluded rear garden, creating a peaceful oasis where you can unwind and enjoy the outdoors in privacy. Situated on the Leigh/Westcliff borders, this home offers easy access to the picturesque Chalkwell Park, the sandy beaches, and the train station, making commuting a breeze. Whether you are looking for a peaceful retreat or a place to create lasting memories, this property truly has it all.

- Fully detached character home
- Established and secluded rear garden
- Kitchen with separate utility area
- Loft room for great storage and/or conversion
- Leigh Broadway and Leigh Road shopping facilities close by
- Three bedrooms, two reception rooms and a conservatory
- Ample parking on driveway
- Conservatory/garden room
- Highly regarded schools within the area including Westcliff Grammar School for Boys and Girls
- Walking distance to Chalkwell Station, Park and Beach



1336 London Road, Leigh-on-Sea, Essex, SS9 2UH

Office: 01702 887 496 [los@bearestateagents.co.uk](mailto:los@bearestateagents.co.uk) <http://www.bearestateagents.co.uk/>