



£700,000 - £750,000 * HUGE REAR EXTENSION WITH KITCHEN-FAMILY ROOM * DOUBLE BEDROOMS WITH TWO BATHROOMS * UTILITY AND DOWNSTAIRS W/C * LARGE SUMMERHOUSE IN THE LANDSCAPED GARDEN * AMPLE PARKING PLUS GARAGE * This beautifully renovated and spacious, four double bedroom family home offers; a rear extension incorporating the bright kitchen-family room, a utility and separate downstairs w/c, a bay-fronted lounge, landscaped garden with large summerhouse, four-piece family bathroom, four double bedrooms with the master having an en-suite, dressing room and Juliet balcony, ample parking on the front driveway and a garage. Positioned on a tree-lined road nearby the grammar schools and a short drive to Chalwell Station for London commuters. Leigh Broadway and Old Leigh are also a short distance away and there are amenities and bus links a walk away. For schooling, Earls Hall Primary and the Eastwood Academy are both within catchment. An internal viewing is highly recommended to see firsthand, how bright and spacious the property is and the high level of finish on offer.

- Imposing character house over three floors
- Kitchen-family room extension
- Large rear garden with soundproofed summerhouse
- Four-piece family bathroom
- Utility room and downstairs W/C
- Ample parking and garage
- Top floor master bedroom with en-suite, dressing area and walk-in wardrobes
- Characterful bay-fronted lounge
- Short walk to grammar schools
- Chalwell Station, Park, Leigh Broadway and Beachfront a short drive away

Prittlewell Chase

Westcliff-On-Sea

£700,000

Price Guide



Prittlewell Chase



Frontage

Parking for three vehicles on a block paved driveway, access to garage, outside lighting and an overhanging front porch with a composite and obscured double glazed door with sidelight leading to:

Entrance Hallway

Carpeted staircase rising to first floor landing, access to WC, understairs storage cupboards, radiator, skirting and herringbone flooring.

Front Lounge

14'9" x 12'9"

UPVC double glazed bay fronted window bespoke alcove storage cupboard, feature fireplace with oak beam and tiling, original cornice, radiator, skirting and carpet.

Downstairs WC

Floating vanity unit with wash basin and chrome mixer tap, partial wall tiling, low-level WC, radiator, spotlighting, extractor fan and lino flooring.

Kitchen Family Room

28'2" x 22'11"

Impressive rear extension comprising dining, sitting, kitchen and breakfast bar area with midnight blue shaker style kitchen units both wall-mounted and base level comprising; five ring burner gas hob, double butler sink with mixer tap, worktops with routed drainer and breakfast bar, space for large American style fridge/freezer, eye-level Neff oven and grill, integrated eye-level microwave, access to utility room, pan drawers, pantry style cupboard, integrated dishwasher, integrated bin cupboard, integrated wine refrigerator, feature lighting. The room also includes a feature fireplace with oak mantle and tiling, two column style radiators, aluminium double glazed bi-folding doors and feature window as well as four double glazed UPVC Velux windows, spotlighting, skirting and herringbone flooring.

Utility Room

6'6" x 6'2"

Shaker style wall cupboards with space for washing machine and tumble dryer, access to garage, spotlighting, skirting and herringbone flooring.

First Floor Landing

Impressive double glazed stained glass feature window to side aspect, a further winder staircase rising to 2nd floor landing with a storage cupboard underneath, skirting and carpeted flooring.

Bedroom One (Top Floor)

26'2" x 15'8"

Impressive master suite with two walk-in wardrobes, a dressing area, access to en-suite, and a UPVC double glazed Juliet balcony with sidelights and three Velux windows to front and rear aspects, three radiators, spotlighting, skirting and carpet.

En-Suite Shower Room

UPVC double glazed Velux window to rear aspect, shower with drencher head and secondary shower attachment, WC with hidden cistern, wall-mounted wash basin with chrome mixer tap, partial wall tiling, spotlighting, extractor fan and floor tiling.

Bedroom Two

14'1" x 12'5"

UPVC double glazed bay fronted window, radiator, skirting and carpet.

Bedroom Three

12'1" x 11'1"

UPVC double glazed window to rear aspect, radiator, alcove storage cupboard, skirting and carpet.

Bedroom Four

11'1" x 6'2"

UPVC double glaze window to rear aspect, radiator, skirting and carpet.

Four-Piece Family Bathroom

11'1" x 6'10"

Obscured UPVC double glazed window to rear aspect, walk-in shower with drencher head and inset shelving, tiled bathtub with chrome mixer tap and a shower attachment, low-level WC, floating vanity unit with wash basin and chrome mixer tap, partial wall tiling, chrome towel radiator, spotlighting, extractor fan, tiled flooring.

Large Rear Garden

Commences with a paved patio area, the rest of the garden is mostly laid to lawn with fencing, a rear decked seating area and access to the impressive summerhouse which includes a separate storage room.

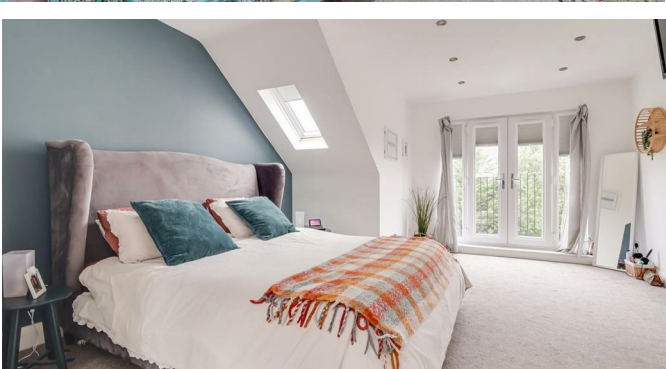
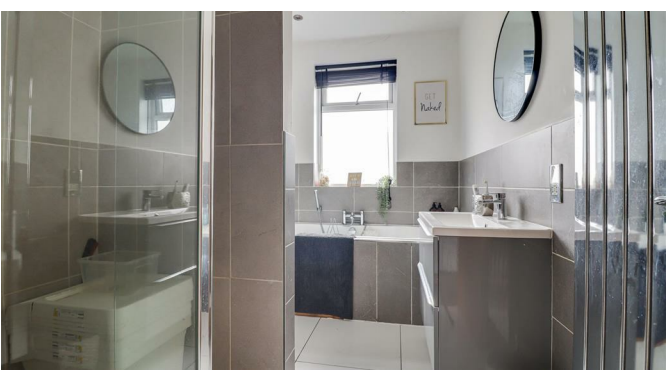
Summerhouse

Fully soundproofed and insulated with bi-folding doors to front aspect as well as a secondary door giving access to the storage room. Currently set up as a bar/lounge area with power, lighting and a Bluetooth speaker system inside and out.

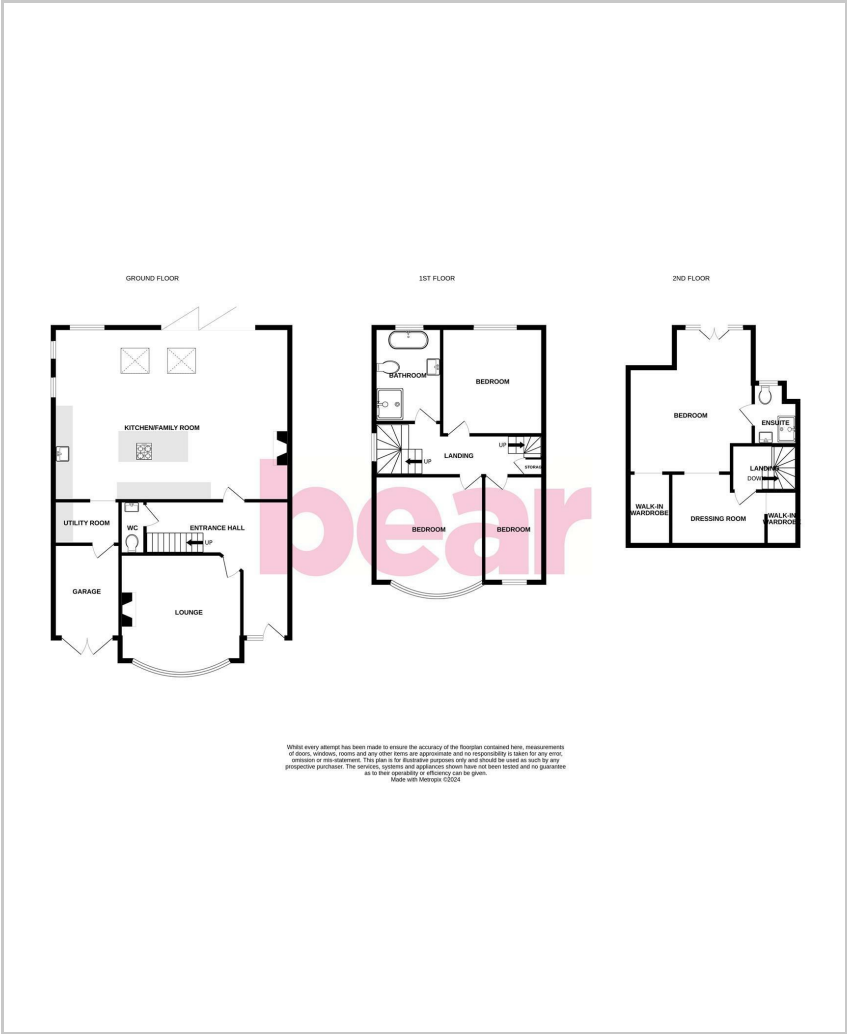
Integral Garage

10'2" x 6'2"

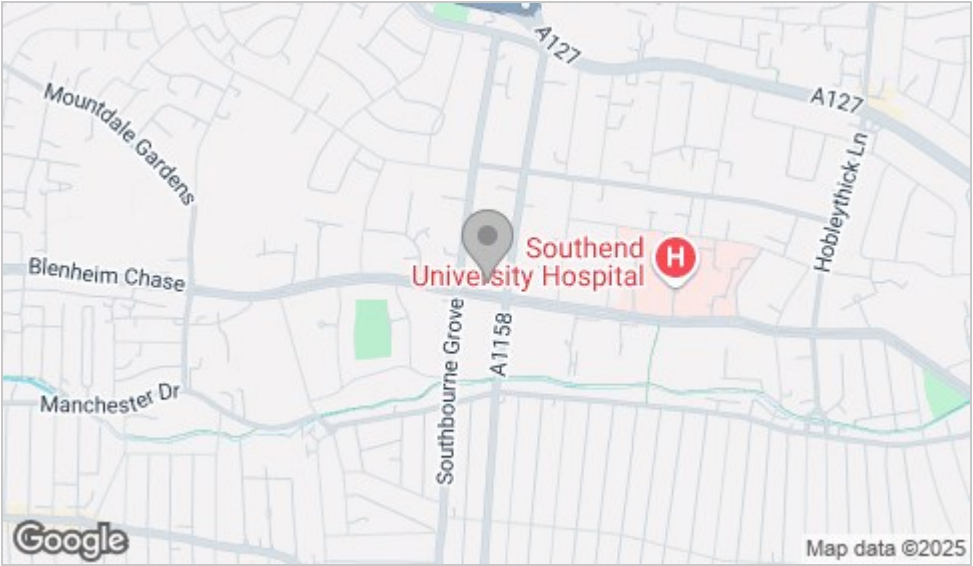
Double doors to front, power, lighting, door to rear leading to utility room.



Floor Plan



Area Map



Viewing

Please contact our Leigh-on-Sea Office on 01702 887 496 if you wish to arrange a viewing appointment for this property or require further information.

These particulars, whilst believed to be accurate are set out as a general outline only for guidance and do not constitute any part of an offer or contract. Intending purchasers should not rely on them as statements of representation of fact, but must satisfy themselves by inspection or otherwise as to their accuracy. No person in this firms employment has the authority to make or give any representation or warranty in respect of the property.

1336 London Road, Leigh-on-Sea, Essex, SS9 2UH

Office: 01702 887 496 los@bearestateagents.co.uk <http://www.bearestateagents.co.uk/>

Energy Efficiency Graph

