

bear

Estate Agents



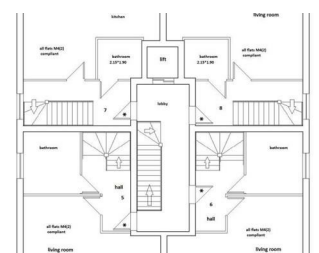
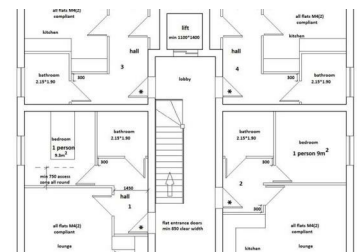
Southbourne Grove, Westcliff-On-Sea

Price Guide £700,000



* £700,000- £800,000 * TWO PASSED PLANNING APPLICATIONS FOR APARTMENTS OR HOUSES *
 Welcome to Southbourne Grove, Westcliff-On-Sea, a prime location for a fantastic property opportunity. This development site boasts two different planning applications. Choose from either 2 x 5 bedroom executive detached family homes or 8 x 1 bedroom apartments, offering ample space for a variety of potential uses. Situated in a sought-after area, this land presents a blank canvas for creating a dream development with high resales. Whether you're looking to build a 2 x luxurious family homes, a stylish apartment complex, or redesign the plans (STPP), the possibilities are endless. Don't miss out on the chance to turn this Land into something truly special in this desirable tree lined road.

- Development opportunity with two options
- Option Two: Eight one bedroom apartments
- South after location within a tree lined road
- Leigh Broadway, Station and Old Town a short drive away
- Seafront amenities within the area
- Option One: Two detached five bedroom houses
- Build ready with CIL paid by owner
- Southend Hospital a short walk away
- Major bus routes, the A127 and A13 close by



1336 London Road, Leigh-on-Sea, Essex, SS9 2UH

Office: 01702 887 496 los@bearestateagents.co.uk <http://www.bearestateagents.co.uk/>