

bear

Estate Agents



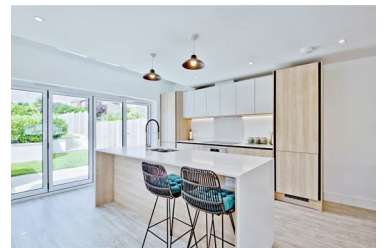
Bellhouse Crescent, Leigh-On-Sea Offers In The Region Of £550,000



Situated on the sought-after Bellhouse Crescent, this impressive four-bedroom semi-detached house offers a blend of contemporary luxury and practical family living. The ground floor boasts an expansive open-plan kitchen/living area with integrated appliances, a kitchen island with quartz surfaces, and bi-fold doors that seamlessly connect the indoors to a beautifully landscaped garden. With underfloor heating, automatic Velux sky windows, and stylish oak doors throughout, this home is designed for comfort and convenience. Each of the four bedrooms is generously sized, with two featuring en-suite bathrooms equipped with rainfall showers, ensuring a luxurious experience.

Located in a prime position, this property is just a five-minute walk from Belfairs Park and its popular golf course, and a short ten-minute drive from the vibrant Leigh-on-Sea High Street and the serene seafront. The Inn at Belfairs is within easy reach for a cosy

- Stunning open-plan kitchen/living room with integrated appliances
- Light grey oak Karndean flooring and oak doors throughout
- Underfloor heating and automatic Velux sky windows
- Solar panels and a bicycle shed for eco-friendly living
- Four luxurious bathrooms including two en-suites with rainfall showers
- Bifold doors leading to a large garden with a paved seating area
- Spacious master bedroom with walk-in cupboard and spotlights
- Prime location near Belfairs Park, golf course, and local amenities



1336 London Road, Leigh-on-Sea, Essex, SS9 2UH

Office: 01702 887 496 los@bearestateagents.co.uk <http://www.bearestateagents.co.uk/>