



Flemming Avenue, Leigh-On-Sea

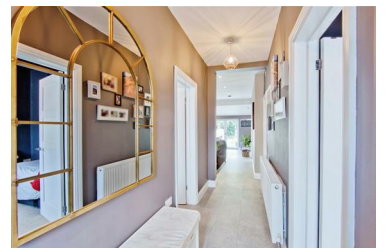
Price Guide £475,000



Guide Price £475,000 - £500,000 Situated in the heart of Leigh-on-Sea, this stunning bungalow offers a blend of modern living and convenience. Boasting three generously sized bedrooms and a large open-plan kitchen, lounge, and diner, this home is perfect for families or anyone looking for a stylish and comfortable living space. The property features bi-folding doors that open onto a spacious rear garden, allowing natural light to flood the interior and providing an excellent area for entertaining or relaxing.

The location is a key highlight, with superb local amenities and transport links right on your doorstep. You are within walking distance to Leigh Broadway, where you can enjoy a variety of independent retailers, cafes, and restaurants. Additionally, the proximity to Leigh-on-Sea C2C station offers direct links into London Fenchurch Street and Liverpool Street, making this an ideal home for commuters. Excellent schools such as Westleigh School are within the catchment area, ensuring high-quality education

- Three Great Sized Bedroom Bungalow
- Ample Off-Street Parking
- Bi-Folding Doors to Large Rear Garden
- Professionally Decorated to a High Standard Throughout
- Potential to extend into roof space STP
- Walking Distance to Leigh Broadway
- Short Walk to Bonchurch Park, Belfairs Woods and Golf Course
- Large Open Plan Kitchen/Lounge/Diner
- Within walking distance to Leigh Station and Old Town
- Darlinghurst and Belfairs Academy Catchments



1336 London Road, Leigh-on-Sea, Essex, SS9 2UH

Office: 01702 887 496 los@bearestateagents.co.uk <http://www.bearestateagents.co.uk/>