

bear

Estate Agents



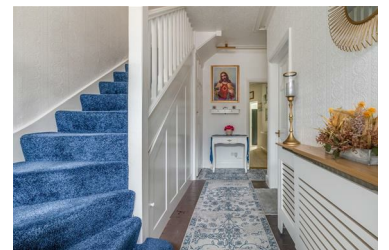
Silverdale Avenue, Westcliff-on-Sea Offers In The Region Of £400,000



Bear Estate Agents are delighted to present this well-loved three-bedroom terraced house in the heart of Westcliff-on-Sea. Boasting ample living space, this home offers a bay fronted lounge with a feature fireplace, a dining room, and a sun lounge that opens into a sizeable kitchen/breakfast room. The ground floor also includes a convenient shower room, while the first floor comprises three spacious bedrooms and a large three-piece bathroom. The property is beautifully presented throughout, ensuring it is ready for its next family to move in and enjoy.

Situated in a prime location, this property offers easy access to excellent local amenities, well-regarded schools, and convenient transport links. Prittlewell and Westcliff Train Stations are both within close proximity, along with numerous bus connections. The local area is vibrant, with a variety of shops, cafes, and restaurants nearby, making this an ideal home for families seeking both

- Charming terraced family home
- Two spacious reception rooms and a sun lounge
- Sizeable kitchen/breakfast room
- Both a shower room and a bathroom
- Three well-proportioned bedrooms
- Expansive, well-maintained garden
- Double glazing and gas central heating
- Close to schools, amenities, and transport links



1336 London Road, Leigh-on-Sea, Essex, SS9 2UH

Office: 01702 887 496 los@bearestateagents.co.uk <http://www.bearestateagents.co.uk/>