

# bear

*Estate Agents*



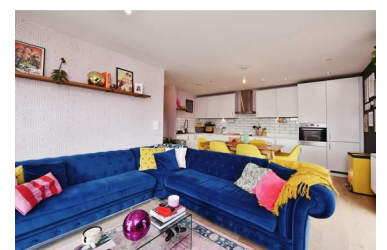
## Fairfax Drive, Westcliff-on-Sea Offers In The Region Of £290,000



This exceptional top-floor apartment in the highly sought-after Prospects Place offers modern living at its finest. Boasting three generously sized double bedrooms, including a master suite with a luxurious en suite bathroom, this property is perfect for those seeking style and comfort. The heart of the home is the stunning open-plan kitchen, lounge, and dining area, featuring integrated appliances, quartz worktops, and an abundance of natural light. With a long lease and allocated parking, this apartment is ready to become your dream home.

Situated in the vibrant and sunny suburb of Westcliff, this apartment is within walking distance to Southend City Centre and benefits from excellent transport links, including nearby Greater Anglia and C2C trainlines for easy access into London. The local area offers a wealth of amenities, from parks and schools to shops and nightlife, making it an ideal location for families and professionals alike.

- No Onward Chain
- En Suite To Master Bedroom
- Stunning Open Plan Kitchen/Lounge/Diner
- Very Modern And Stylish Throughout
- £1479.46 Per Year Service Charge
- Three Amazing Size Double Bedrooms
- Long Lease
- Walking Distance To Southend City Centre
- Nearby To Greater Anglia And C2C Trainlines for Access Into London
- Priory Park And Southend High For Boys Within Close Proximity



1336 London Road, Leigh-on-Sea, Essex, SS9 2UH

Office: 01702 887 496 [los@bearestateagents.co.uk](mailto:los@bearestateagents.co.uk) <http://www.bearestateagents.co.uk/>