



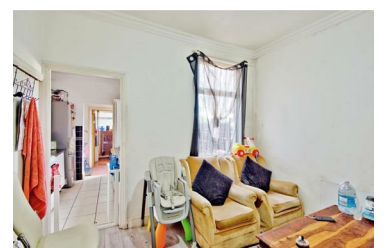
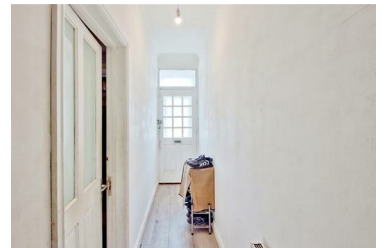
## Fairfax Drive, Westcliff-On-Sea

### Price Guide £300,000



\* £300,000 - £350,000 \* This mid terrace home in Westcliff offers generous living spaces, making it ideal for families or those seeking extra room. The property boasts three double bedrooms, loft room, a large lounge/diner, and a kitchen/breakfast room. With a ground floor shower room and an additional bathroom upstairs, this home ensures convenience and comfort for all residents. The good size rear garden provides a perfect space for outdoor relaxation and entertaining. Located in the heart of Westcliff, this property benefits from excellent local amenities and transport links. The area is renowned for its vibrant community and easy access to shops, restaurants, and leisure facilities. Families will appreciate the proximity to reputable schools and parks, making it a convenient and desirable place to live.

- Spacious semi-detached chalet
- Large lounge/diner
- Ground floor shower room/WC
- Good size rear garden
- Three double bedrooms and loft room
- Kitchen/breakfast room
- First floor bathroom/WC



1336 London Road, Leigh-on-Sea, Essex, SS9 2UH

Office: 01702 887 496 [los@bearestateagents.co.uk](mailto:los@bearestateagents.co.uk) <http://www.bearestateagents.co.uk/>