



* £300,000- £320,000 * RECENTLY UPGRADED PENTHOUSE APARTMENT * PRIVATE SOUTH FACING BALCONY * BATHROOM PLUS EN-SUITE * BRIGHT SPACIOUS ROOMS * This top floor penthouse apartment has a south facing balcony attached to the bright rear reception room, three bedrooms, and a generous family bathroom. There is an en-suite to the large master bedroom, as well as a modern fully fitted kitchen and separate dining area/office space. Leigh Station and the popular Broadway are only a walk away, and there are useful amenities and bus links on the doorstep. For schooling, Leigh North Street and Belfairs Academy are within the catchment area and the grammar schools are a very short drive away. The property is vacant and offered with no onward chain.

- Penthouse apartment
- Three great sized bedrooms
- Bathroom plus en-suite to master
- Separate office/dining area
- Great school catchment area
- Private south facing balcony with far reaching views
- Fitted wardrobes in each bedroom
- Bright lounge
- Modern fitted kitchen with additional Juliet balcony
- Walk to Leigh Station and the Broadway

1152 London Road

Leigh-on-Sea

£300,000

Price Guide



1152 London Road



Frontage

Block paved pathway leading up to communal front door, communal entrance with stairs rising to the second floor within the flat.

Dining/Office Area on Landing

20'3" x 6'6"

Three double UPVC glazed windows including a feature window on the staircase and two sets of bespoke shutter blinds, dining area as well as a work station, loft access, spotlighting, coving, radiator with decorative cover, boiler cupboard, skirting and carpet.

Lounge

14'9" x 11'10"

UPVC French doors and sidelights to rear aspect for access to the private south facing balcony as well as a UPVC double glazed side window, feature fireplace, radiator with decorative wooden cover, spotlighting, coving, skirting, carpet.

Private Balcony

South facing with far reaching views.

Kitchen

8'7" x 7'10"

UPVC double glazed Juliet balcony door and sidelights, gloss kitchen units both wall-mounted and base level comprising: two storage areas to left hand side, wood effect laminate worktops with stainless steel sink and drainer with chrome mixer tap, four ring burner induction hob with integrated oven and a tiled splashback, dishwasher, washing machine, fridge/freezer, spotlighting, coving skirting, wood effect laminate flooring (appliances to remain).

Master Bedroom

18'3" x 12'3"

UPVC double glazed bay fronted window, two sets of fitted wardrobes, access to en-suite, radiator with decorative cover, spotlighting, skirting, carpet.

En-Suite to Master

8'7" x 4'3"

Fully tiled walls, walk-in shower with drencher head and secondary shower attachment, spotlighting, extractor fan, vanity unit with wash basin and chrome mixer tap, combined toilet with hidden cistern, towel radiator, floor tiling.

Second Bedroom

12'5" x 8'11"

UPVC double glazed window to rear aspect, fitted wardrobes, radiator with cover, spotlighting, coving, skirting, carpet.

Third Bedroom

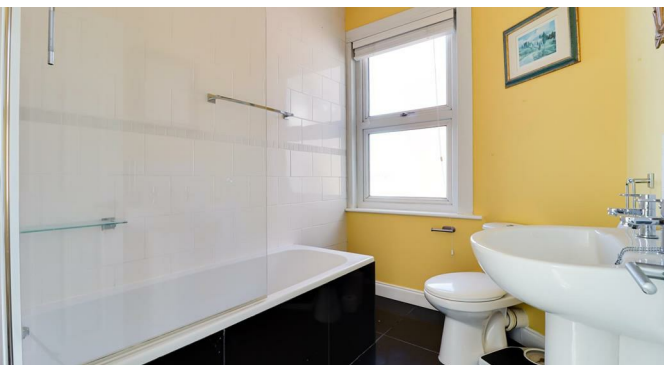
10'9" x 6'4"

UPVC double glazed window to front aspect, fitted wardrobes, radiator with cover, spotlighting skirting, carpet.

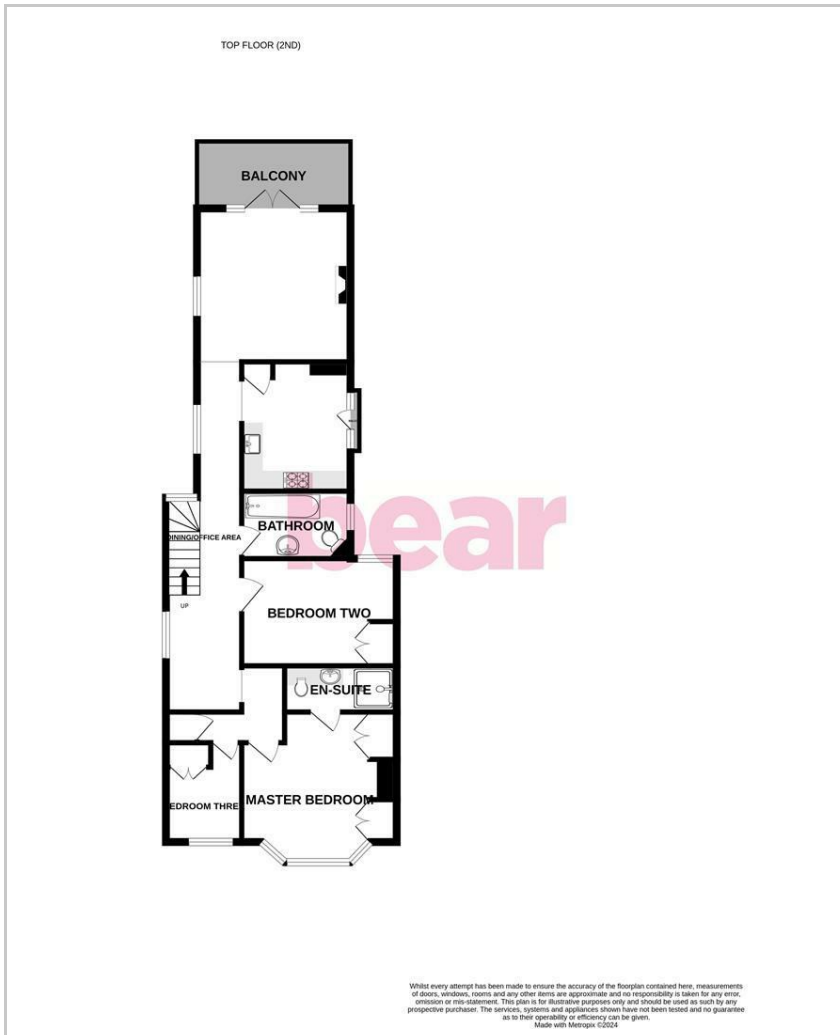
Three-Piece Family Bathroom

10'9" x 7'11"

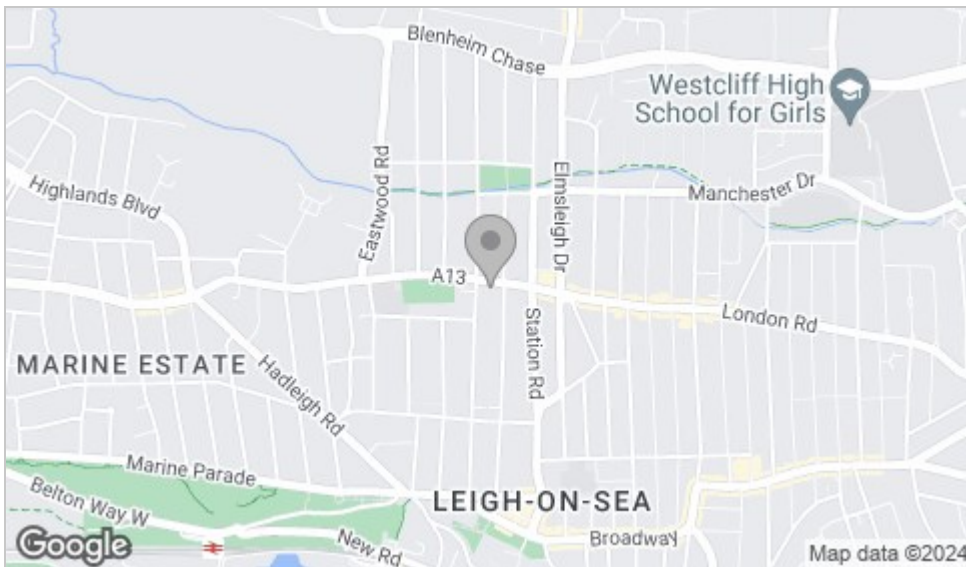
Obscured UPVC double glazed window to side aspect, pedestal wash basin with chrome tap, bath with shower over, low-level w/c, spotlighting, skirting, partial wall tiling, floor tiling.



Floor Plan



Area Map



Viewing

Please contact our Leigh-on-Sea Office on 01702 887 496 if you wish to arrange a viewing appointment for this property or require further information.

These particulars, whilst believed to be accurate are set out as a general outline only for guidance and do not constitute any part of an offer or contract. Intending purchasers should not rely on them as statements of representation of fact, but must satisfy themselves by inspection or otherwise as to their accuracy. No person in this firm's employment has the authority to make or give any representation or warranty in respect of the property.

1336 London Road, Leigh-on-Sea, Essex, SS9 2UH

Office: 01702 887 496 los@bearestateagents.co.uk <http://www.bearestateagents.co.uk/>

Energy Efficiency Graph

