



\* £550,000 - £600,000 \* DETACHED BUNGALOW \* IN AND OUT DRIVEWAY WITH AMPLE PARKING \* ATTACHED GARAGE \* SOUTH FACING GARDEN \* HUGE POTENTIAL FOR EXTENSION/LOFT CONVERSION S.T.P. \* NEARBY THE GRAMMAR SCHOOLS \* INCREDIBLY SPACIOUS INTERIORS \* This two double bedroom bungalow is located on an especially quiet road on the sought-after 'Somerset Estate' and is nearby amenities, bus links, the grammar schools, quick access to the A127 and only a short drive to Chalkwell Station. It has huge potential for yet more development, ample parking, an attached garage, a south facing garden and is being offered with no onward chain! Internally there are two large bedrooms, a bay-fronted lounge, a spacious kitchen-diner, family bathroom and an en-suite wet room. For schooling, the property is within the Earls Hall Primary School and The Eastwood Academy catchment areas.

- Detached bungalow
- In and Out driveway with ample parking
- South facing garden
- Garage
- En-suite wet room and family bathroom
- Spacious kitchen-diner
- Bay-fronted lounge
- Two great sized bedrooms
- Especially quiet road
- Tonnes of period character

## Taunton Drive

Westcliff-on-Sea

**£550,000**

Price Guide





# Taunton Drive



## Frontage

In and out block paved driveway providing ample off-street parking, access to single garage.

## Front Porch

UPVC double glazed french doors, original wooden entrance door with glazed inset and coloured leadlight side panel leading to:

## Entrance Hallway

13'10" x 4'5"

Radiator, power points, picture rail, dado rail, laminate flooring.

## Lounge

16'2" into the bay x 11'8"

Double glazed leadlight bay window to front aspect, feature stained glass windows to side aspect, two radiators, power points, TV point, feature stone fireplace, coved to ceiling.

## Kitchen-Diner

22'8" x 11'10"

Double glazed leadlight french doors leading to rear garden, double glazed leadlight window to side aspect, kitchen units both base level and wall-mounted comprising; roll edge worktops incorporating 1.25 stainless steel sink with drainer, integrated appliances include fridge, freezer, dishwasher and washing machine, NEFF electric oven with four ring burner gas hob and extractor above, tiled splashbacks, power points, coving, laminate flooring.

## Master Bedroom

22'0" x 11'3"

UPVC double glazed leadlight window to rear, range of fitted wardrobes, power points, radiator, TV point.

## En-Suite Wet Room

7'8" x 6'5"

Obscured glazed window to rear aspect, vanity unit with wash basin, low-level w/c, chrome heated towel rail, partially tiled walls, extractor fan, MIRA wall mounted electric shower unit.

## Bedroom Two

12'0" x 10'11"

Double glazed leadlight window to front, power points, coving, picture rail, feature fireplace, radiator.

## Three-Piece Family Bathroom

7'10" x 5'4"

Panelled bath with mixer tap and shower attachment, low level w/c, vanity unit with wash basin, partially tiled walls, chrome heated towel rail, inset spotlighting, extractor fan.

## Attached Garage

Up & over door, power and lighting, secured courtesy door which provides access to rear garden.

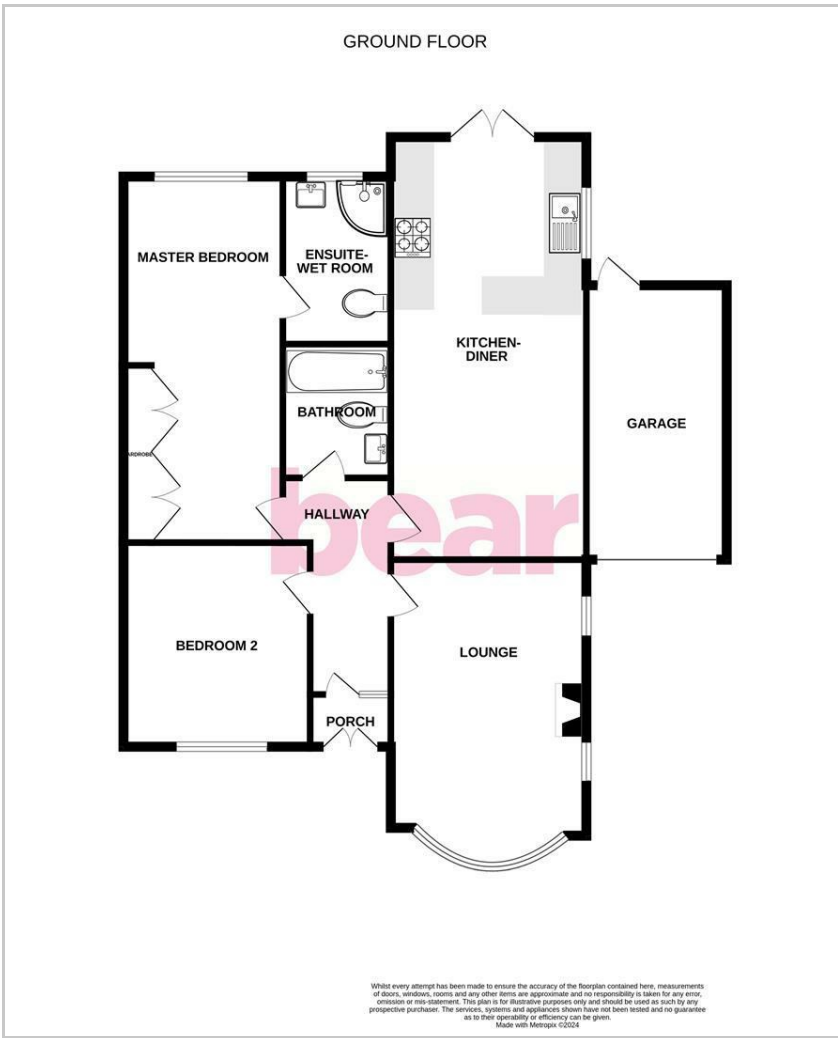
## South Facing Rear Garden

The secluded garden commences with a paved patio, large lawn area with mature shrubbery borders, fenced all around, access to the attached garage, outside tap and outside lighting.

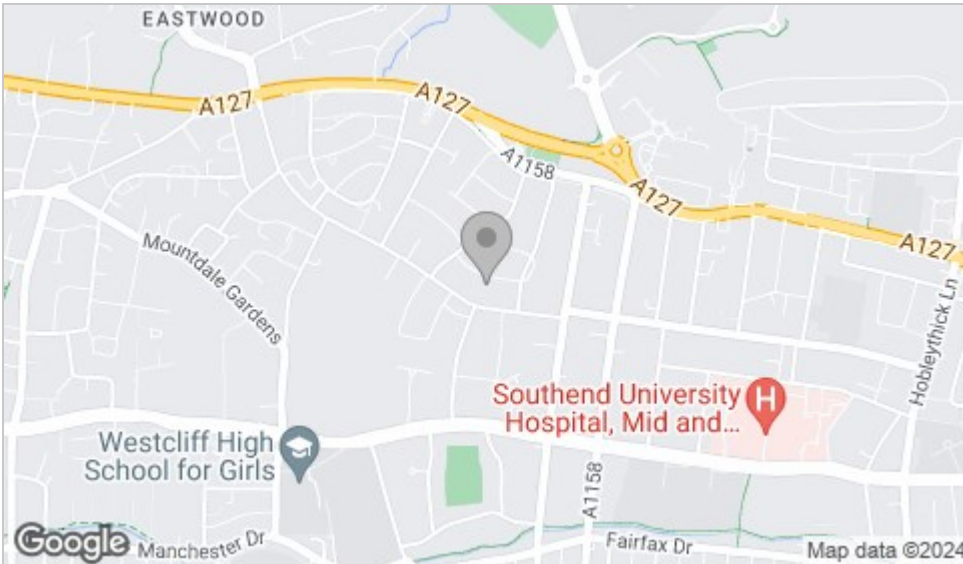




# Floor Plan



# Area Map



# Viewing

Please contact our Leigh-on-Sea Office on 01702 887 496 if you wish to arrange a viewing appointment for this property or require further information.

These particulars, whilst believed to be accurate are set out as a general outline only for guidance and do not constitute any part of an offer or contract. Intending purchasers should not rely on them as statements of representation of fact, but must satisfy themselves by inspection or otherwise as to their accuracy. No person in this firm's employment has the authority to make or give any representation or warranty in respect of the property.

1336 London Road, Leigh-on-Sea, Essex, SS9 2UH

Office: 01702 887 496 [los@bearestateagents.co.uk](mailto:los@bearestateagents.co.uk) <http://www.bearestateagents.co.uk/>

# Energy Efficiency Graph

