



22a Church Road Cheadle

£900 PCM

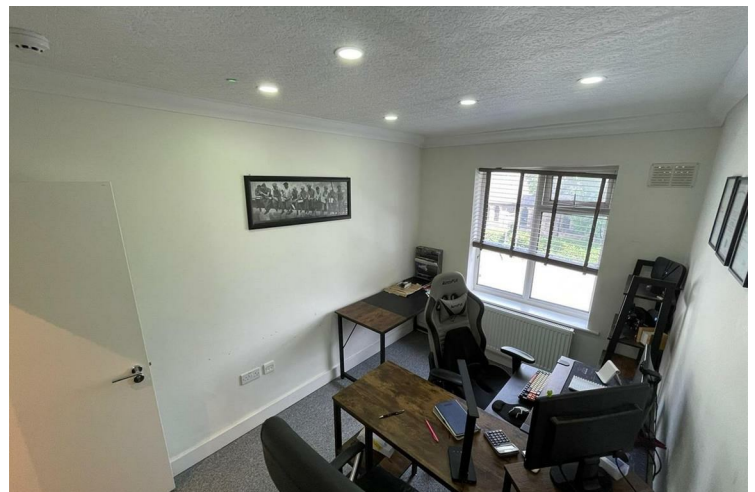
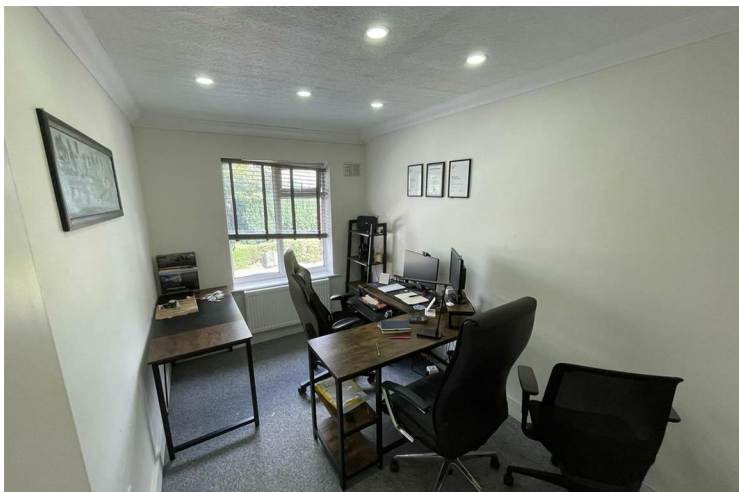
OFFICE SPACE

From Mistoria Estate Agents

A large office space consisting of three offices, Kitchen, Bathroom.

Ideal Location

Call the office to arrange your viewing.



Full Description

Mistoria Estate Agents offer to the market this first floor office space with own front entrance set on a main road location.

Consisting of a

main office with lots of space and large window, Two further offices both of very generous sizes, kitchen area with sink, dishwasher and fridge,

Small store room housing communication materials and ladies and gents WC,

£1000 PCM plus utility bills, WIFI and business rates tax (if applicable)

Clean modern space, carpeted and very bright and airy.

Usage subject to permissions.







Energy Efficiency Rating		
	Current	Potential
<i>Very energy efficient - lower running costs</i>		
(92 plus) A		
(81-91) B		
(69-80) C		
(55-68) D		
(39-54) E		
(21-38) F		
(1-20) G		
<i>Not energy efficient - higher running costs</i>		
England & Wales	EU Directive 2002/91/EC	

Agents Note: Whilst every care has been taken to prepare these particulars, they are for guidance purposes only. All measurements are approximate and are for general guidance purposes only and whilst every care has been taken to ensure their accuracy, they should not be relied upon and potential buyers/tenants are advised to recheck the measurements

Worsley Mistoria
31 Memorial Road
Walkden, Worsley
Manchester
M28 3AG

0161 790 3999
info@mistoria.co.uk
mistoria.co.uk

