



19 Maple Road
Manchester

£329,995
Leasehold

MOTIVATED SELLERS - Mistoria Estate Agents Worsley are delighted to offer to the market a large, three bed semi detached property in South Swinton. A highly desirable areas for families with all amenities on the doorstep including great schools in the heart of a great community.
Arrange your viewing!!!!



• SOUTH SWINTON • THREE BED FAMILY HOME • FINISHED TO A HIGH STANDARD • ROOM TO EXTEND FURTHER

Full Description

This stunning three bed semi-detached property is located in the highly sought-after area of South Swinton, offering a perfect blend of modern living and traditional charm. This property boasts three spacious bedrooms consisting of two doubles and one single room, one bathroom with modern suite, and two reception rooms, the second of which has patio doors leading onto the garden, making it an ideal family home.

Upon entering the property, you are greeted by a welcoming hallway that leads to the spacious living room. The living room is bright and airy, with large windows that allow natural light to flood the room. The room is tastefully decorated with neutral colours, creating a warm and inviting atmosphere. The living room also features a beautiful fireplace, adding a touch of elegance to the space.

The kitchen is located at the rear of the property and is fitted with modern appliances. The kitchen also features ample storage space, making it perfect for those who love to cook and entertain. The dining area is located adjacent to the kitchen, providing the perfect space for family meals and gatherings whilst looking over the patio.

Upstairs, the property boasts three spacious bedrooms, all of which are tastefully decorated and feature large windows that allow natural light to flood the rooms. The family bathroom is also located on this floor and is fitted with a modern suite, including a bath, shower, and WC. There is the addition of a boarded loft with access ladder in the event you require more storage or have plans to convert.

Outside, the property features a well-maintained garden, perfect for those who love to spend time outdoors. The garden is mainly laid to lawn and features a patio area, providing the perfect space for outdoor dining and entertaining. The property also benefits from a large driveway, providing off-street parking for multiple vehicles. There is plenty to do for the green fingered enthusiast with lots of planting space, some fruit trees and not one but two sheds to contain those tools.

Swinton is a vibrant town located in the heart of Greater Manchester, offering a wide range of amenities and attractions. The town is home to a number of excellent schools, making it an ideal location for families. Swinton also boasts a range of shops, restaurants, and cafes, providing plenty of options for those who love to shop and dine out. Swinton is just a stones through and is a vibrant town with lots of bars and great night life.

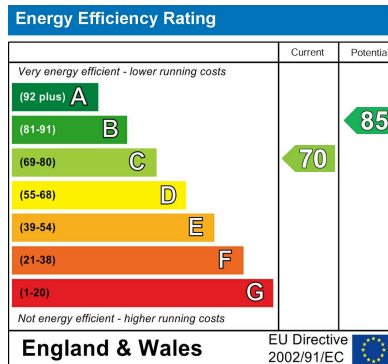
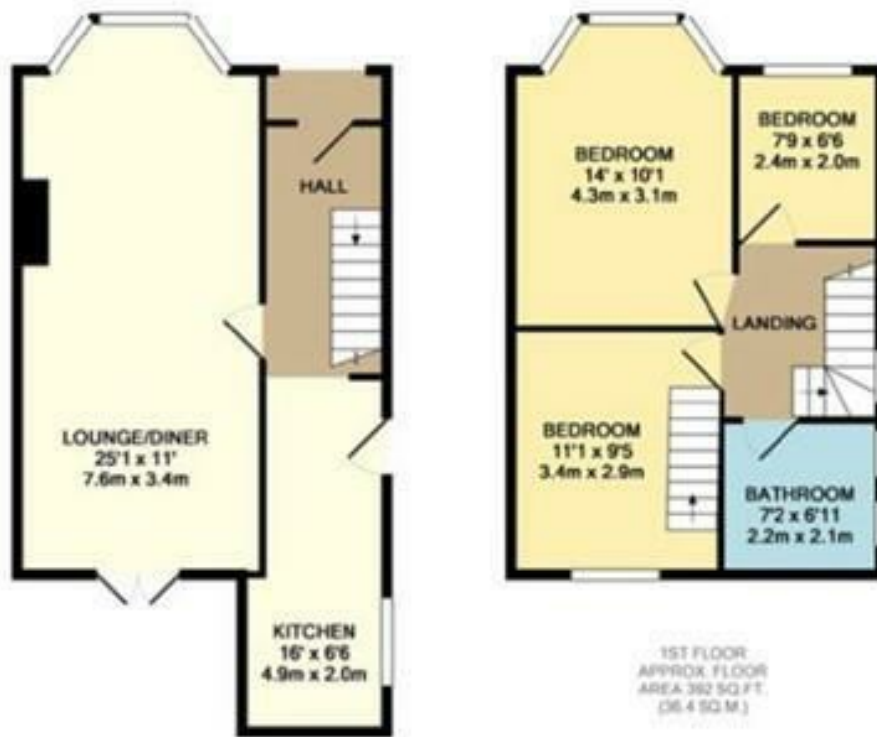
For those who love the great outdoors, Swinton is home to a number of parks and green spaces, including Clifton Country Park and Worsley Woods. These parks offer a range of activities, including walking, cycling, and fishing, making them perfect for those who love to stay active.

Overall, this stunning semi-detached property offers the perfect blend of modern living and traditional charm, making it an ideal family home. With its spacious rooms, well-maintained garden, and excellent location, this property is sure to impress.



- HIGHLY DESIRABLE LOCATION • CLOSE TO SCHOOLS, PARKS AND AMENITIES • MODERN BOILER • BOARDED LOFT





Agents Note: Whilst every care has been taken to prepare these particulars, they are for guidance purposes only. All measurements are approximate and are for general guidance purposes only and whilst every care has been taken to ensure their accuracy, they should not be relied upon and potential buyers/tenants are advised to recheck the measurements

Worsley Mistoria
31 Memorial Road
Walkden, Worsley
Manchester
M28 3AG

0161 790 3999
info@mistoria.co.uk
mistoria.co.uk

