



MISTORIA
ESTATE AGENTS



110 Market Street Stoneclough

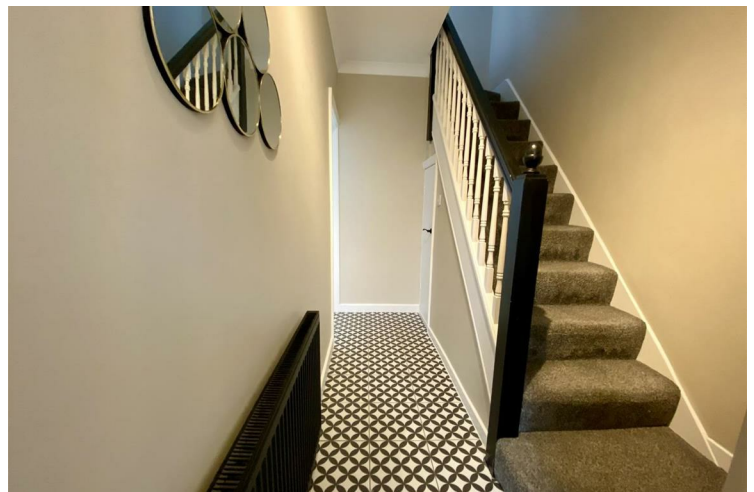
£215,000

Freehold

Located on Market Street in Radcliffe, this delightful three-bedroom terrace house offers a perfect blend of modern living and classic character. Built in 1935, the property has been thoughtfully updated to provide a contemporary finish while retaining its original charm.

Spanning an impressive 1,055 square feet, this home features two spacious reception rooms. The modern kitchen is well-equipped, making it a joy for any home cook. The property boasts three well-proportioned bedrooms, providing ample space for families or those seeking a home office.

With two bathrooms, morning routines will be a breeze, ensuring convenience for all residents. The south-facing garden is a standout feature, allowing for plenty of sunlight throughout the day, perfect for gardening enthusiasts or those who simply enjoy outdoor living.



- THREE BEDROOM TERRACE • MODERN FINISH • PERFECT FOR FIRST TIME BUYERS • MOVE STRAIGHT IN



- SOUTH FACING AMPLE GARDEN • SOLAR PANELS • ADDITIONAL WC • CLOSE TO AMENITIES AND SCHOOLS





Matterport Property Report:

110 Market Street

Gross Floor Area - Full Property 95.7 m² | Floor 1 55.5 m²

Sizes and dimensions are approximate, actual may vary

Visit 3D space on
Matterport



Energy Efficiency Rating		
	Current	Potential
Very energy efficient - lower running costs		
(92 plus) A		
(81-91) B		
(69-80) C		
(55-68) D		
(39-54) E		
(21-38) F		
(1-20) G		
Not energy efficient - higher running costs		
England & Wales	EU Directive 2002/91/EC	

Agents Note: Whilst every care has been taken to prepare these particulars, they are for guidance purposes only. All measurements are approximate and are for general guidance purposes only and whilst every care has been taken to ensure their accuracy, they should not be relied upon and potential buyers/tenants are advised to recheck the measurements

Worsley Mistoria
31 Memorial Road
Walkden, Worsley
Manchester
M28 3AG

0161 790 3999
info@mistoria.co.uk
mistoria.co.uk

