



12 Snowdon Drive Bolton

£249,000

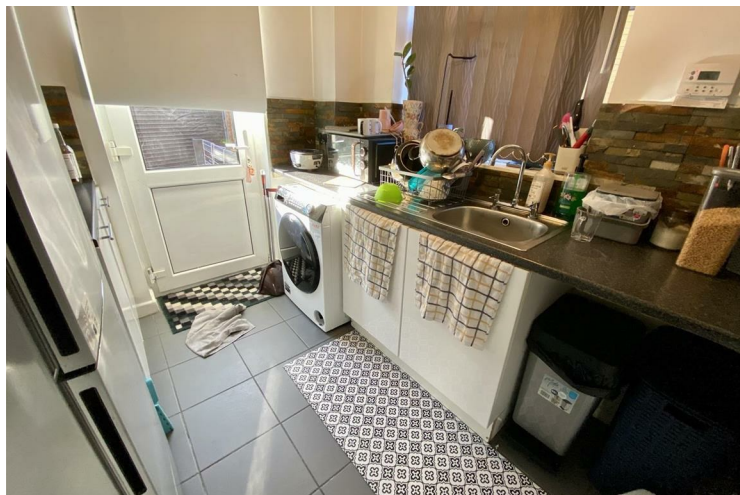
SOLD WITH VACANT POSSESSION
CHARMING FAMILY HOME
DETACHED HOUSE IN HORWICH

Nestled in the charming cul-de-sac of Snowdon Drive in Horwich, Bolton, this delightful three-bedroom detached house offers a perfect blend of comfort and tranquillity. With vacant possession, you can move in without delay and start enjoying your new home right away.

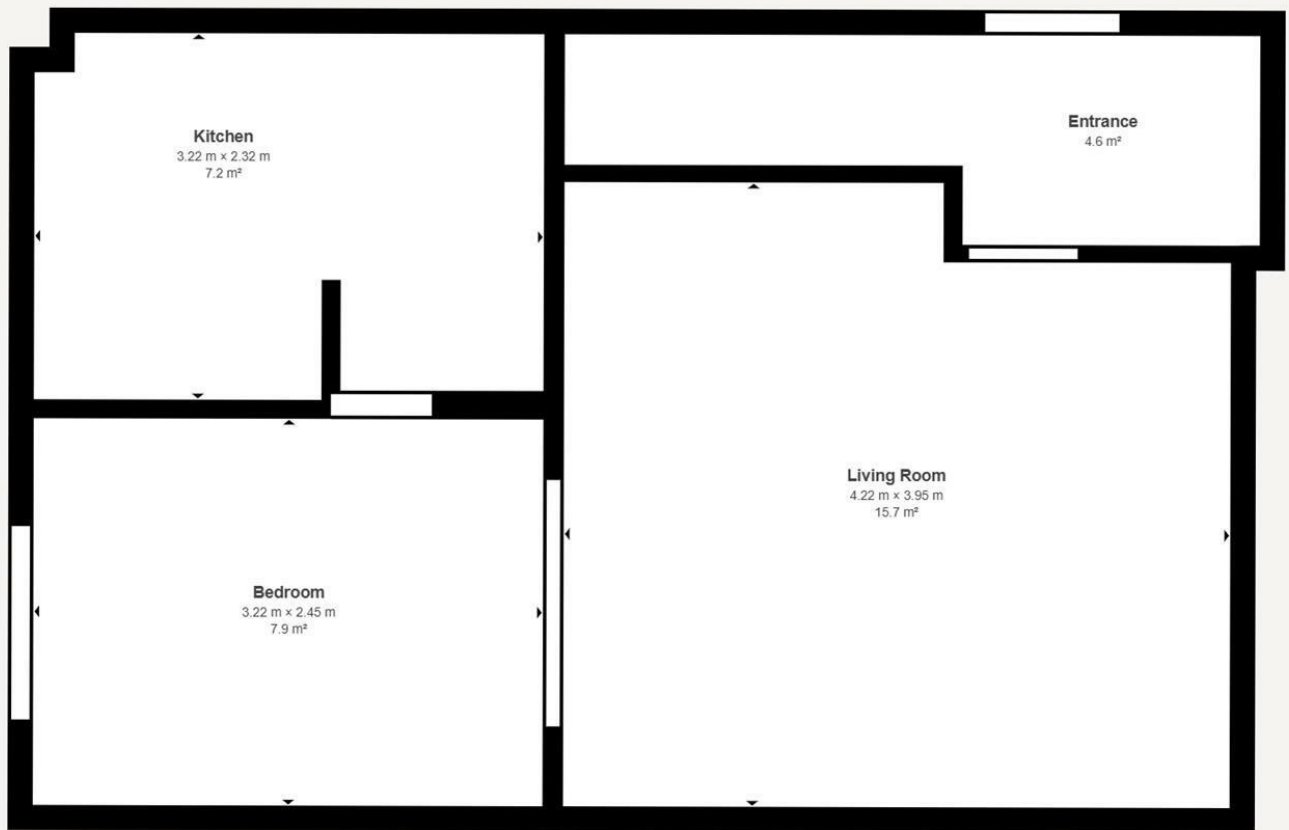
The property is situated in a semi-rural area, providing a peaceful environment while still being conveniently close to local amenities. The spacious layout of the house is ideal for families or those seeking extra room to entertain guests. Each of the three bedrooms is well-proportioned, allowing for a restful retreat at the end of the day.



- DETACHED HOUSE IN HORWICH • HILLSIDE LOCATION • SEMI RURAL • SOME UPDATING REQUIRED • IDEAL FOR EXTENSION • PLEASE SEE THE VIRTUAL TOUR







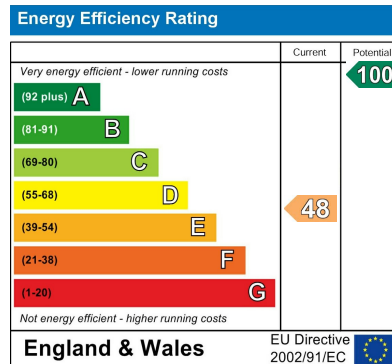
Matterport Property Report:

12 Snowdon Drive

Indoor Scanned Area - Full Property 66.2 m² | Floor 1 35.4 m²

Sizes and dimensions are approximate, actual may vary

Visit 3D space on
Matterport



Agents Note: Whilst every care has been taken to prepare these particulars, they are for guidance purposes only. All measurements are approximate and are for general guidance purposes only and whilst every care has been taken to ensure their accuracy, they should not be relied upon and potential buyers/tenants are advised to recheck the measurements

Worsley Mistoria
31 Memorial Road
Walkden, Worsley
Manchester
M28 3AG

0161 790 3999
info@mistoria.co.uk
mistoria.co.uk

