



**MISTORIA**  
ESTATE AGENTS



## Prescott Street Manchester

**£85,000**

**Leasehold**

HANDS OFF INVESTMENT  
PRESENTED BY MISTORIA WORSLEY

Welcome to Prescott Street, Worsley - a charming location that offers a peaceful retreat in the heart of the Walkden. This modern ground floor apartment boasts a spacious 732 sq ft layout, perfect for those seeking a comfortable living space.

TENANT IN SITU.

Current Rent = £725pcm

Gross Yield = 10.25%



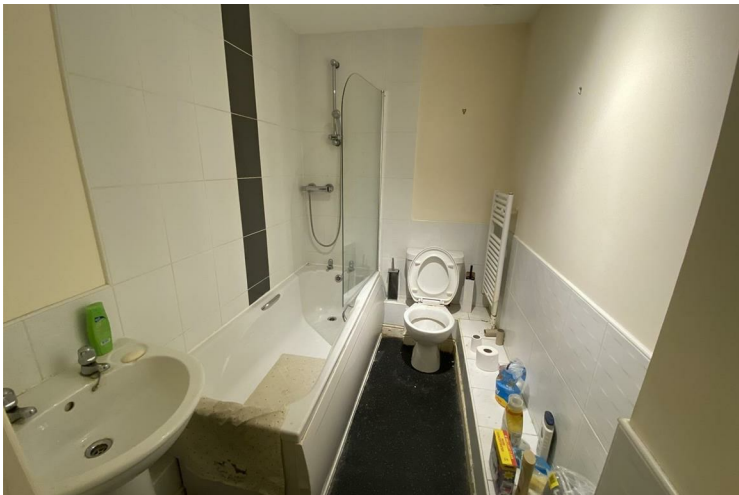


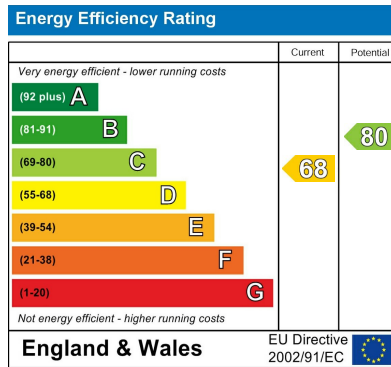
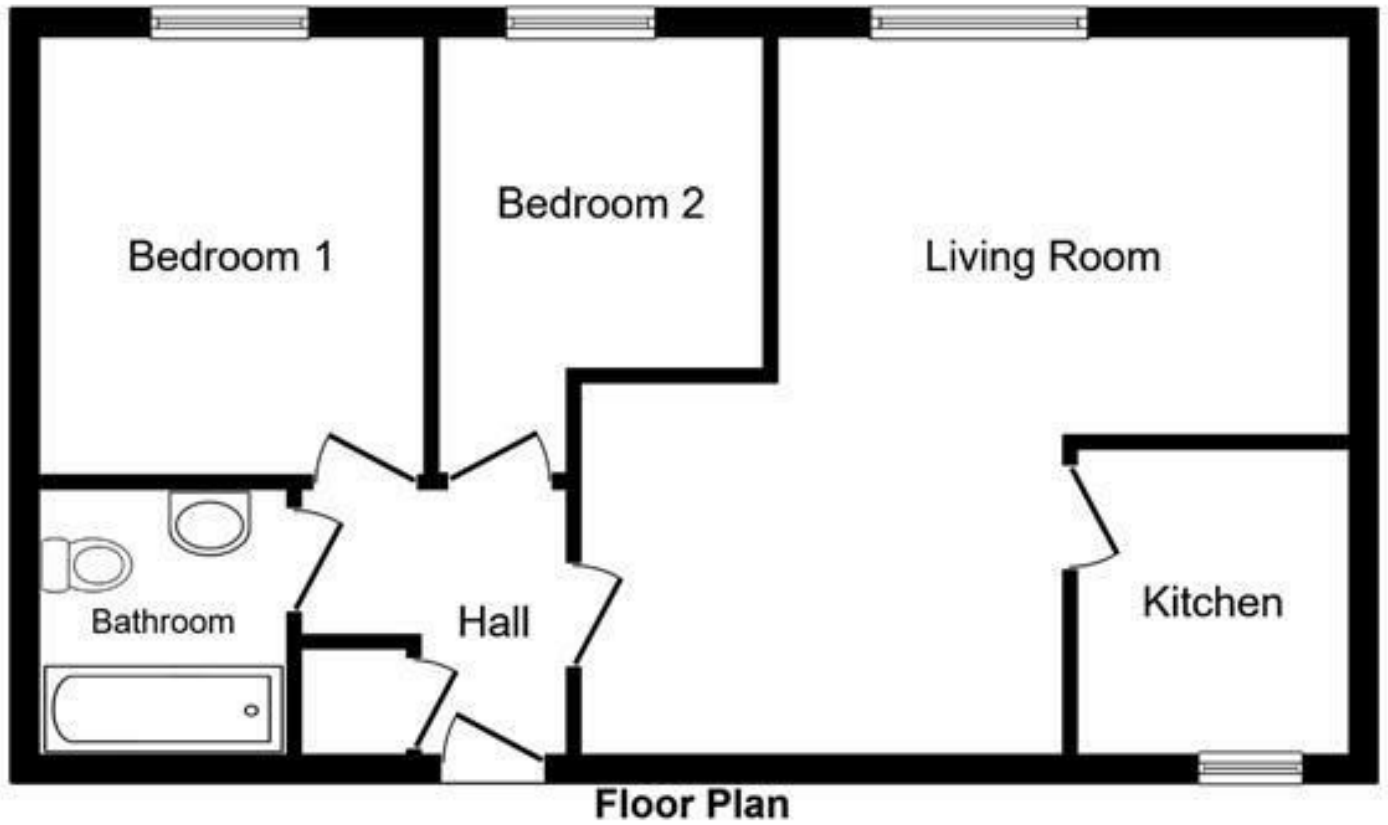
- INVESTMENT ONLY • HAND OFF INVESTMENT • MANAGED THROUGH MISTORIA • 10.58% Yield • SECURE ENTRY • PARKING • LARGE LOUNGE • BALCONY

### Full Description

We are pleased to offer this two bedroom ground floor apartment located just off Manchester Road East. Property benefits from Upvc double glazing and wall mounted electric heaters. Comprising of Hall, Bathroom, Lounge open plan to kitchen and dining area. Two bedrooms. Call now to view.







Agents Note: Whilst every care has been taken to prepare these particulars, they are for guidance purposes only. All measurements are approximate and are for general guidance purposes only and whilst every care has been taken to ensure their accuracy, they should not be relied upon and potential buyers/tenants are advised to recheck the measurements

Worsley Mistoria  
 31 Memorial Road  
 Walkden, Worsley  
 Manchester  
 M28 3AG

0161 790 3999  
 info@mistoria.co.uk  
 mistoria.co.uk

