



**MISTORIA**  
ESTATE AGENTS

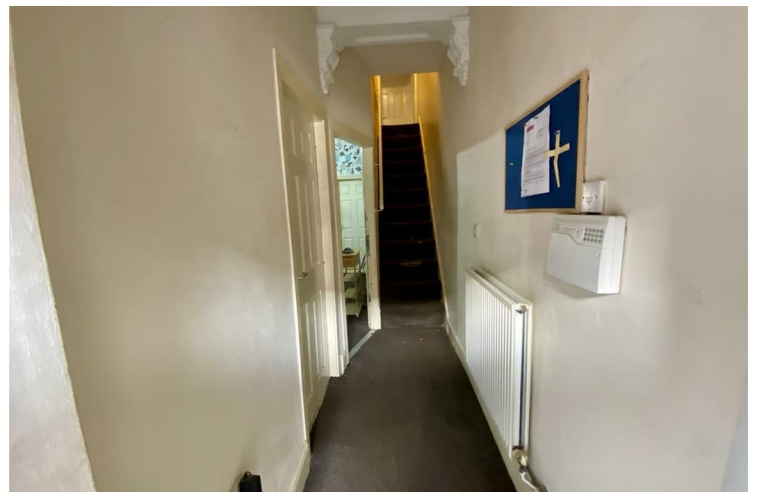


## 41 Mildred Street Salford

**£199,999**

VACANT HMO  
IDEAL INVESTMENT  
FOUR BEDROOMS  
FANTASTIC ADDITION TO ANY PORTFOLIO  
SOME LIGHT UPDATING REQUIRED

Welcome to Mildred Street, Salford! This charming property, dating back to the early 1900s, offers a spacious living arrangement with 4 bedrooms, making it an ideal choice for those seeking a comfortable and convenient home.



- VACANT • FOUR BED HMO • REQUIRES LIGHT UPDATE • IDEAL STUDENT LET • LARGE TERRACE • INVESTORS!!!









Ground Floor



Floor 1



Energy Efficiency Rating		
	Current	Potential
Very energy efficient - lower running costs		
(92 plus) A		
(81-91) B		
(69-80) C		
(55-68) D		
(39-54) E		
(21-38) F		
(1-20) G		
Not energy efficient - higher running costs		
	60	73
England & Wales		EU Directive 2002/91/EC

Agents Note: Whilst every care has been taken to prepare these particulars, they are for guidance purposes only. All measurements are approximate and are for general guidance purposes only and whilst every care has been taken to ensure their accuracy, they should not be relied upon and potential buyers/tenants are advised to recheck the measurements

Worsley Mistoria  
31 Memorial Road  
Walkden, Worsley  
Manchester  
M28 3AG

0161 790 3999  
info@mistoria.co.uk  
mistoria.co.uk

