



MISTORIA
ESTATE AGENTS



Prescott Street Manchester

£85,000

Leasehold

HANDS OFF INVESTMENT
PRESENTED BY MISTORIA WORSLEY

Welcome to Prescott Street, Worsley - a charming location that offers a peaceful retreat in the heart of the Walkden. This modern ground floor apartment boasts a spacious 732 sq ft layout, perfect for those seeking a comfortable living space.

TENANT IN SITU.

Current Rent = £725pcm

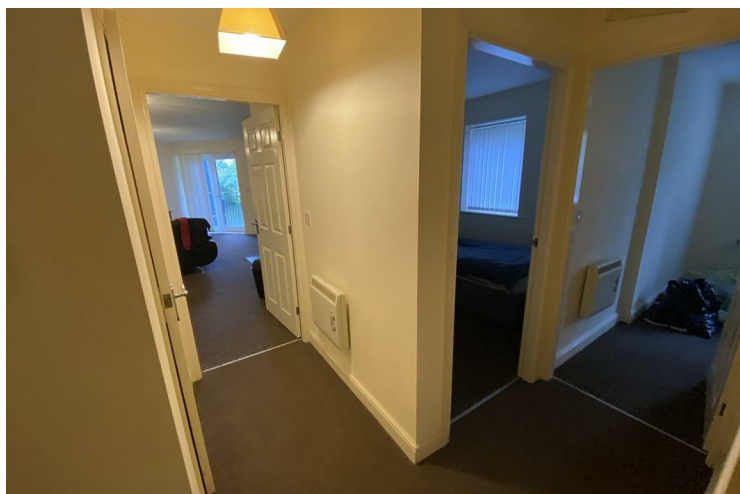
Gross Yield = 10.25%

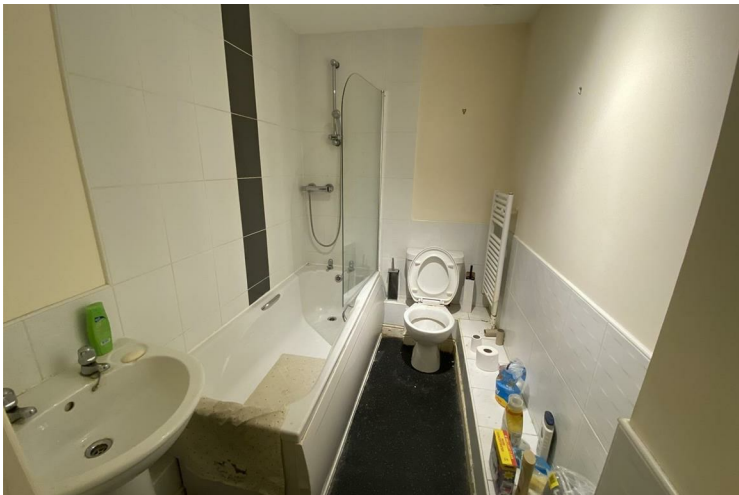


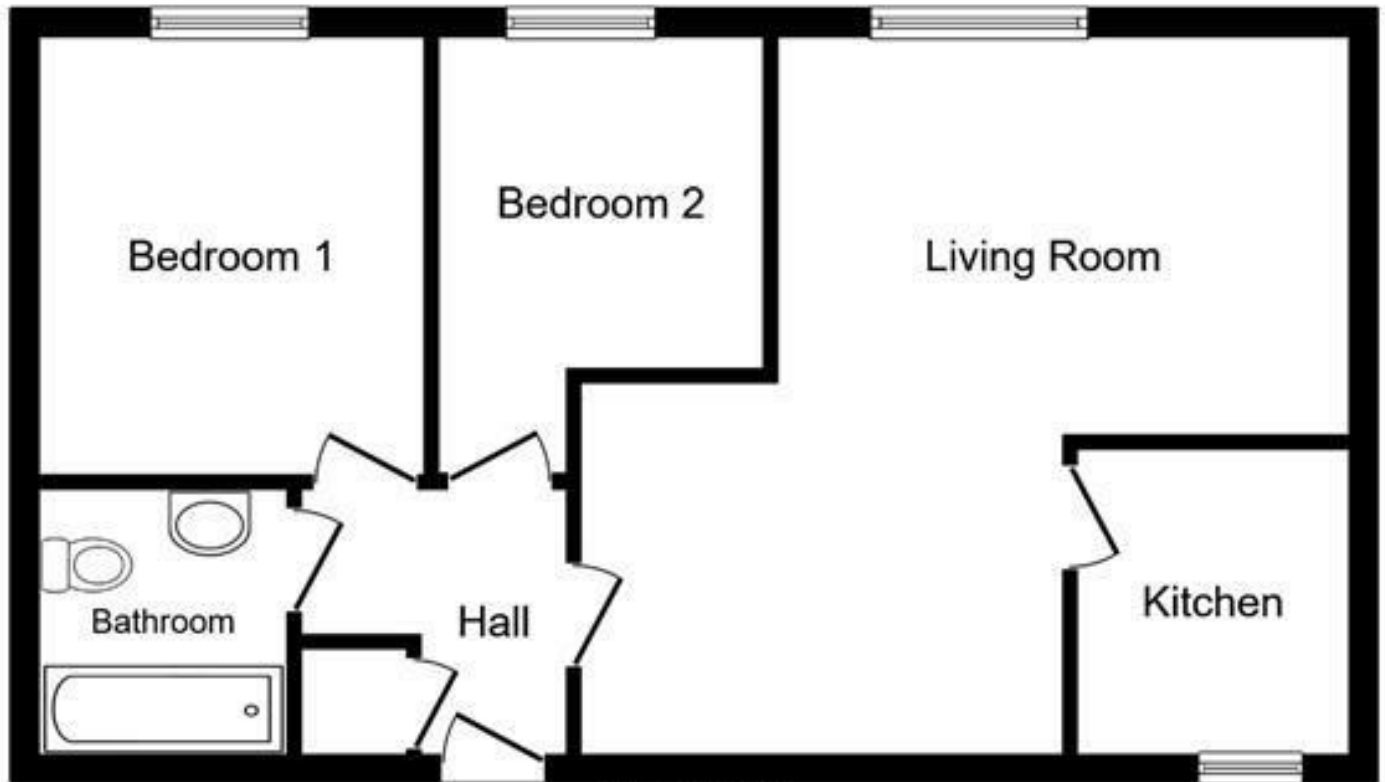
- INVESTMENT ONLY • HAND OFF INVESTMENT • MANAGED THROUGH MISTORIA • 10.58% Yield • SECURE ENTRY • PARKING • LARGE LOUNGE • BALCONY

Full Description

We are pleased to offer this two bedroom ground floor apartment located just off Manchester Road East. Property benefits from Upvc double glazing and wall mounted electric heaters. Comprising of Hall, Bathroom, Lounge open plan to kitchen and dining area. Two bedrooms. Call now to view.







Floor Plan



Energy Efficiency Rating		Current	Potential
Very energy efficient - lower running costs			
(92 plus) A			
(81-91) B			
(69-80) C		68	80
(55-68) D			
(39-54) E			
(21-38) F			
(1-20) G			
Not energy efficient - higher running costs			
England & Wales		EU Directive 2002/91/EC	

Agents Note: Whilst every care has been taken to prepare these particulars, they are for guidance purposes only. All measurements are approximate and are for general guidance purposes only and whilst every care has been taken to ensure their accuracy, they should not be relied upon and potential buyers/tenants are advised to recheck the measurements

Worsley Mistoria
 31 Memorial Road
 Walkden, Worsley
 Manchester
 M28 3AG

0161 790 3999
 info@mistoria.co.uk
 mistoria.co.uk

