



- FOUR BEDROOMS
- THREE BATHROOMS
- EXTENDED
- OVER THREE FLOORS

61 Dickens Avenue, Hillingdon, UB8 3DN

Asking Price Of £585,000

Andrews Residential are delighted to offer to the market this extended four bedroom, three bathroom semi detached family home which well balanced accommodation over three floors. Benefits include parking and good size garden.



Property Description

THE LOCATION

The property is situated on Dickens Avenue giving easy access to Stockley Park, Heathrow Airport, Hillingdon Hospital, Brunel University, Uxbridge Town centre and the M4 Motorway. Close by are highly regarded Schools including the popular Bishopshalt Secondary School.

THE PROPERTY

Entrance hall

Ground floor W/C and shower room

Through lounge

Extended kitchen breakfast room

First floor

Three bedrooms

Family bathroom

Second floor

Master bedroom and en-suite shower room & W/C.

In our opinion the property is offered for sale in good condition throughout and would ideally suit a large or growing family. Benefits include double glazing and gas central heating.



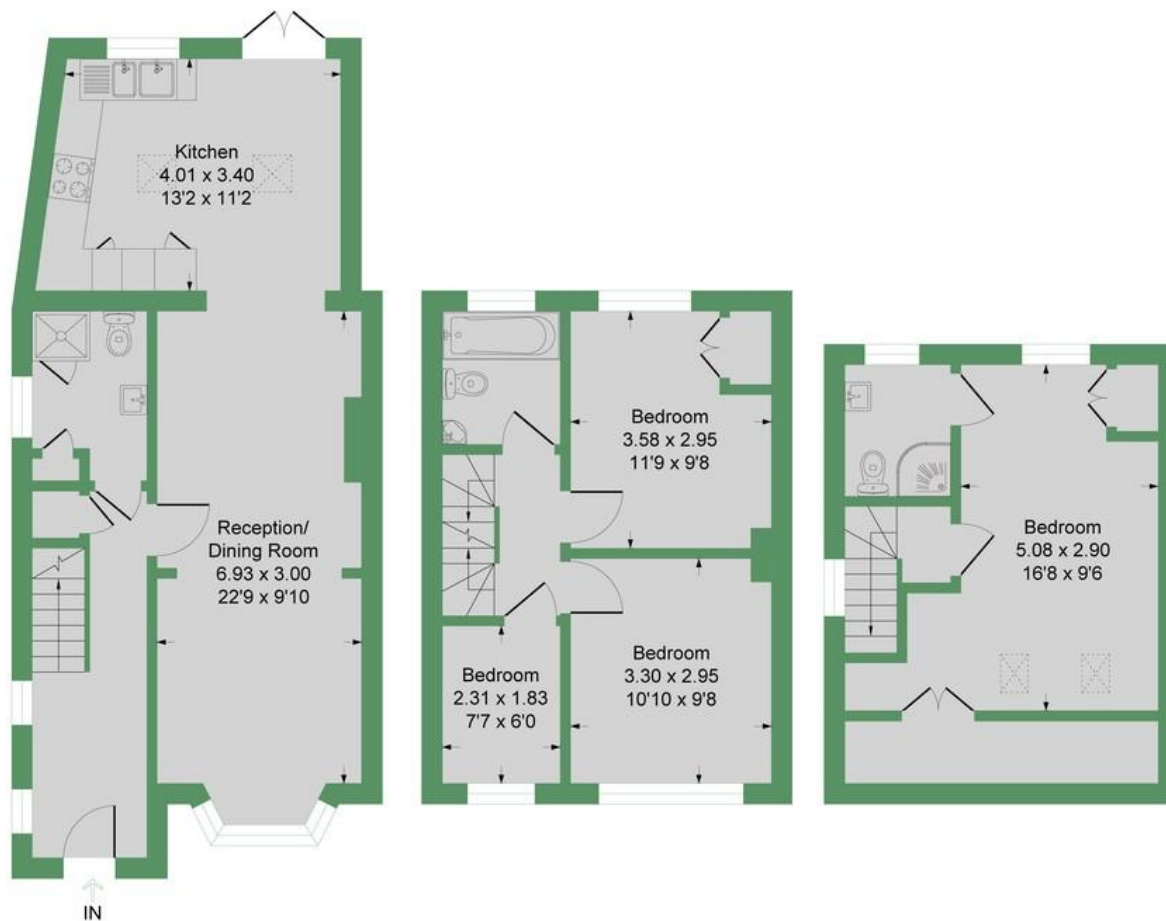
OUTSIDE

To the front of the property there is off street parking and side access to the rear of the property. Outside to the rear there is a good size garden with patio, lawn, three shed's and a greenhouse.



Dickens Avenue UB8

Approximate Gross Internal Floor Area = 108.8 sq m / 1172 sq ft



Ground Floor
Approximate Floor Area
560.08 sq. ft
(52.03 sq.m)

First Floor
Approximate Floor Area
360.20 sq. ft
(33.46 sq.m)

Second Floor
Approximate Floor Area
251.38 sq. ft
(23.35 sq.m)



Illustration for identification purposes only, measurements are approximate, not to scale.

Hillingdon office
11 Crescent Parade
Hillingdon
UB10 OLG

Uxbridge office
41 Belmont Road
Uxbridge
UB8 1QT

Hillingdon office 01895 231311
Uxbridge office 01895 707777
info@andrewsresidential.co.uk
www.andrewsresidential.co.uk

Agents Note: Whilst every care has been taken to prepare these sales particulars, they are for guidance purposes only. All measurements are approximate and for general guidance purposes only and whilst every care has been taken to ensure their accuracy, they should not be relied upon and potential buyers are advised to recheck the measurements