



• Four-bedroom semi detached family home 29 Hanover Circle, Hayes, Middlesex, UB3 2TJ

- Three bathrooms
- Extended to the rear
- Ensuite to master bedroom

Offers In Excess Of £650,000

This extended four-bedroom semi-detached home, featuring a loft conversion and rear extension, offers an abundance of living space and modern comfort. Thoughtfully designed and well presented throughout, it's ideal for families seeking both style and functionality. Nestled in a peaceful and sought-after neighbourhood, this property is truly a hidden gem. The highlight of the garden is a fantastic outdoor bar area, perfect for entertaining or relaxing on summer evenings.



Property Description

PROPERTY

Welcome to this spacious and beautifully presented four-bedroom semi-detached residence, enhanced by both a rear extension and a loft conversion, offering an impressive amount of versatile living space. This superb home has been meticulously maintained throughout, combining contemporary style with everyday comfort. Ideally situated within a peaceful and desirable neighbourhood, the property enjoys a delightful sense of tranquillity while remaining conveniently close to local amenities, schools, and transport links.

Ground Floor

A welcoming entrance hall leads to a generous reception room, perfect for relaxing or entertaining. The modern fitted kitchen provides ample storage and workspace, complemented by a bright and spacious dining room featuring patio doors that open directly onto the rear garden. A convenient downstairs bathroom and WC complete this level.

First Floor

The first floor hosts three well-proportioned bedrooms, all tastefully decorated, alongside a contemporary family bathroom.

Second Floor

The converted loft provides an impressive principal bedroom, complete with fitted wardrobes and a luxurious ensuite bathroom, creating a private and serene retreat.

Exterior

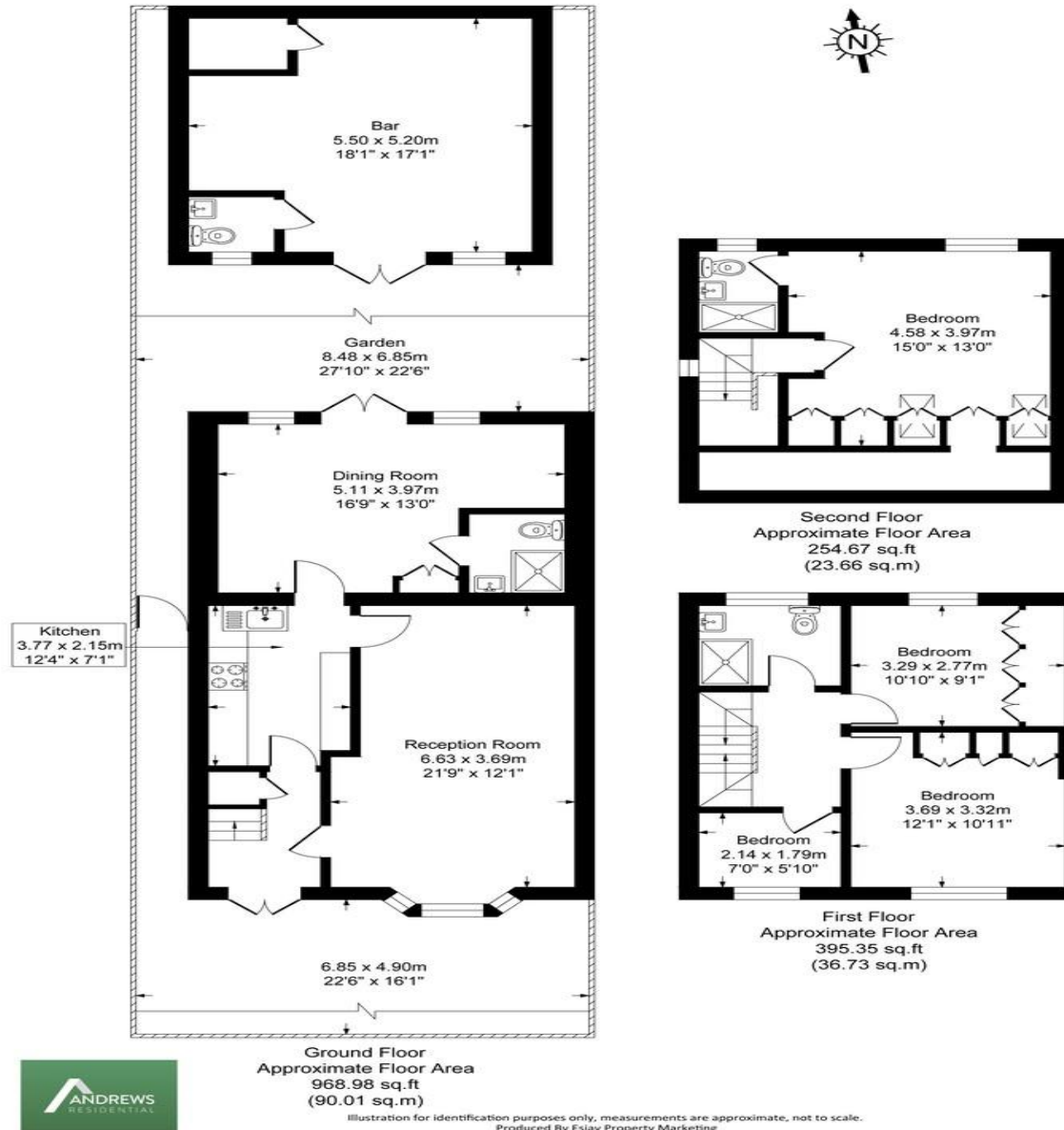
The rear garden offers an inviting outdoor space ideal for family gatherings and summer entertaining. A standout feature is the bespoke garden bar, perfect for hosting guests or unwinding at the end of the day.





Hanover Circle UB3

Approx. Gross Internal Floor Area
150.4 Sq M - 1619 Sq Ft



Hillingdon office
11 Crescent Parade
Hillingdon
UB10 0LG

Uxbridge office
41 Belmont Road
Uxbridge
UB8 1QT

Hillingdon office 01895 231311
Uxbridge office 01895 707777
info@andrewsresidential.co.uk
www.andrewsresidential.co.uk

Agents Note: Whilst every care has been taken to prepare these sales particulars, they are for guidance purposes only. All measurements are approximate are for general guidance purposes only and whilst every care has been taken to ensure their accuracy, they should not be relied upon and potential buyers are advised to recheck the measurements