



- Private garden
- Excellent bus, road, and rail connections
- Close to Brunel University
- Family-friendly location

17 Bartram Close, Hillingdon, Middlesex, UB8 3AX

Guide Price £275,000

Andrews Residential are delighted to present this generously proportioned one-bedroom maisonette, offered with a long lease and the rare advantage of direct access to a large private garden. Beautifully maintained throughout, the property features a modern fitted kitchen, a contemporary bathroom, and the added comfort of double glazing. Combining stylish interiors with excellent outdoor space, this home is perfect for first-time buyers, downsizers, or investors alike.



Property Description

THE PROPERTY

This spacious one-bedroom ground floor maisonette, offered with a long lease and the rare advantage of direct access to a generous private garden. The property is well presented throughout and benefits from a modern fitted kitchen and bathroom, double glazing, and the convenience This attractive home is ideal for first-time buyers, downsizers or investors seeking a property with outdoor space and excellent transport links nearby.

OUTSIDE

To the front of the property there is a path leading to the front door and rear garden. Outside to the rear there is a large private garden with patio and laid to lawn area.

THE LOCATION

Bartram Close is a highly regarded residential road, ideally located just moments from Uxbridge Road. The area benefits from excellent transport connections, with nearby bus routes, easy access to the M40 for swift travel into London and the Home Counties, as well as proximity to Heathrow Airport. Families are well served by a selection of outstanding local schools, including Hillingdon Primary School and the sought-after Bishopshalt Senior School. Stockley Park, Brunel University and Hillingdon Hospital are all within easy reach, further enhancing the area's appeal.

Uxbridge town centre, with its vibrant mix of shops, restaurants, and transport links including the Metropolitan and Piccadilly line stations, is only a short drive away.

DETAILS OF SALE

Leasehold sale

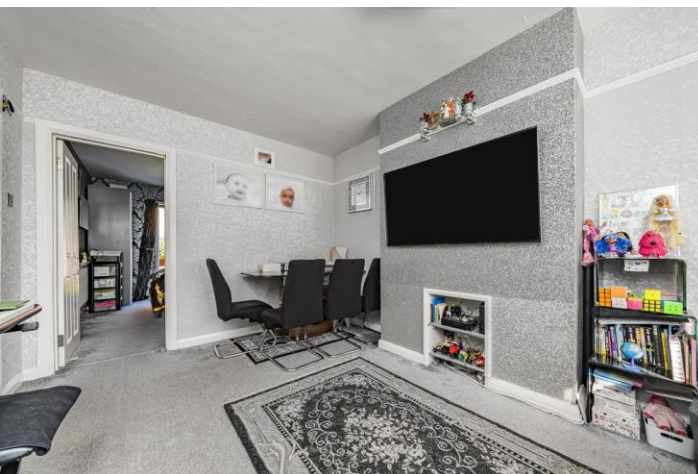
102 years left remaining on lease

EPC rating: C

<https://find-energy-certificate.service.gov.uk/energy-certificate/0360-2715-9510-2025-0515>

Council Tax Band - C

<https://www.tax.service.gov.uk/check-council-tax-band/property/4eb56f49-b569-b9d2-78c9-41f964638a24>





Bartram Close UB8

Approx. Gross Internal Floor Area
41.2 Sq M - 444 Sq Ft

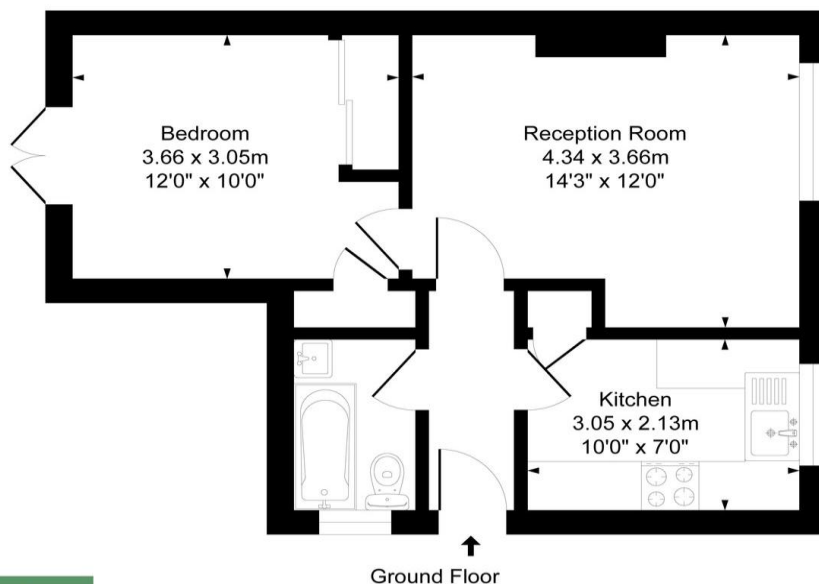


Illustration for identification purposes only, measurements are approximate, not to scale.
Produced By Esjay Property Marketing

Hillingdon office
11 Crescent Parade
Hillingdon
UB10 0LG

Uxbridge office
41 Belmont Road
Uxbridge
UB8 1QT

Hillingdon office 01895 231311
Uxbridge office 01895 707777
info@andrewsresidential.co.uk
www.andrewsresidential.co.uk

Agents Note: Whilst every care has been taken to prepare these sales particulars, they are for guidance purposes only. All measurements are approximate and for general guidance purposes only and whilst every care has been taken to ensure their accuracy, they should not be relied upon and potential buyers are advised to recheck the measurements. Andrews Residential is a trading name of Halcdedix Limited, a limited company incorporated in England and Wales under registration number 10898495