



- Two bedroom first floor maisonette
- Two double bedrooms
- Large front garden
- Garage

12 Churchill Close, Hillingdon, Middlesex, UB10 0EA

Guide Price £275,000

Andrews Residential are delighted to offer to the market this two bedroom first floor maisonette with large front garden providing off street parking. Located in a quiet residential close to Long Lane and the Uxbridge Road. In our opinion this would make an ideal first time or investment purchase. Offered to the market with the benefit of NO ONWARD CHAIN.



Property Description

PROPERTY

The property comprises an entrance hall with doors leading to the spacious living room, fitted kitchen, a large master bedroom, a well proportioned second bedroom and family bathroom with separate W/C

OUTSIDE

To the front of the property is a large shingled front garden providing off street parking and access to a garage.

LOCATION

Churchill Close is a popular residential road in Hillingdon located close to the Uxbridge Road and Long Lane offering access to a number of local amenities including local shops, Hillingdon's Metropolitan/Piccadilly line train station and a number of highly regarded local schools including Hillingdon Primary and Bishopshalt senior school. The A40/ M40 with its links to London and the Home Counties are a short drive away along with Uxbridge Town centre with its multitude of shopping facilities, bars and restaurants.

DETAILS OF SALE

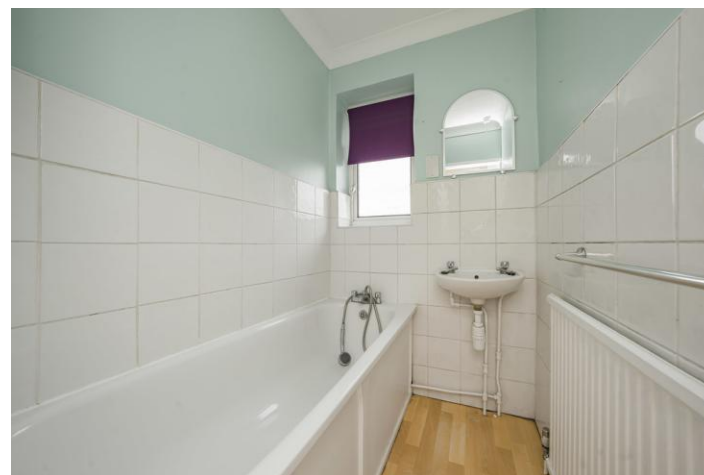
The vendor informs us that there is 86 years remaining on the lease.

Ground rent is £100 per annum.

Council tax band: C

London Borough of Hillingdon

EPC rating C





Churchill Close UB10

Approximate Gross Internal Floor Area = 74.5 sq m / 803 sq ft

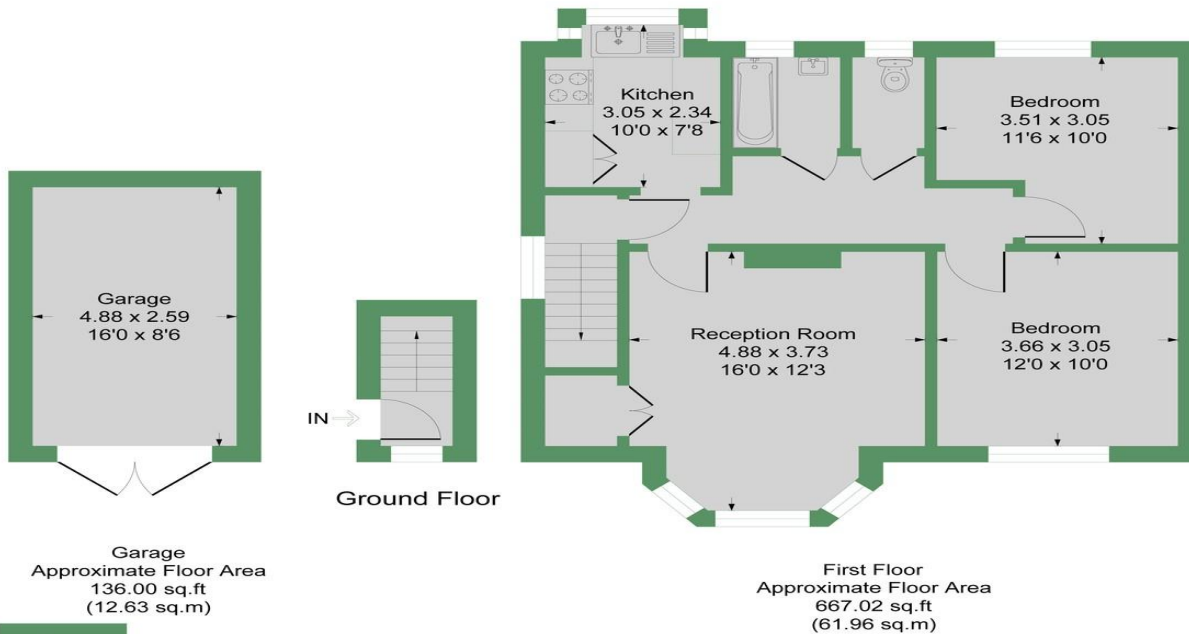


Illustration for identification purposes only, measurements are approximate, not to scale.
Produced By Esjay Property Marketing



Hillingdon office
11 Crescent Parade
Hillingdon
UB10 OLG

Uxbridge office
41 Belmont Road
Uxbridge
UB8 1QT

Hillingdon office 01895 231311
Uxbridge office 01895 707777
info@andrewsresidential.co.uk
www.andrewsresidential.co.uk

Agents Note: Whilst every care has been taken to prepare these sales particulars, they are for guidance purposes only. All measurements are approximate and for general guidance purposes only and whilst every care has been taken to ensure their accuracy, they should not be relied upon and potential buyers are advised to recheck the measurements. Andrews Residential is a trading name of Halcedix Limited, a limited company incorporated in England and Wales under registration number 10898495