



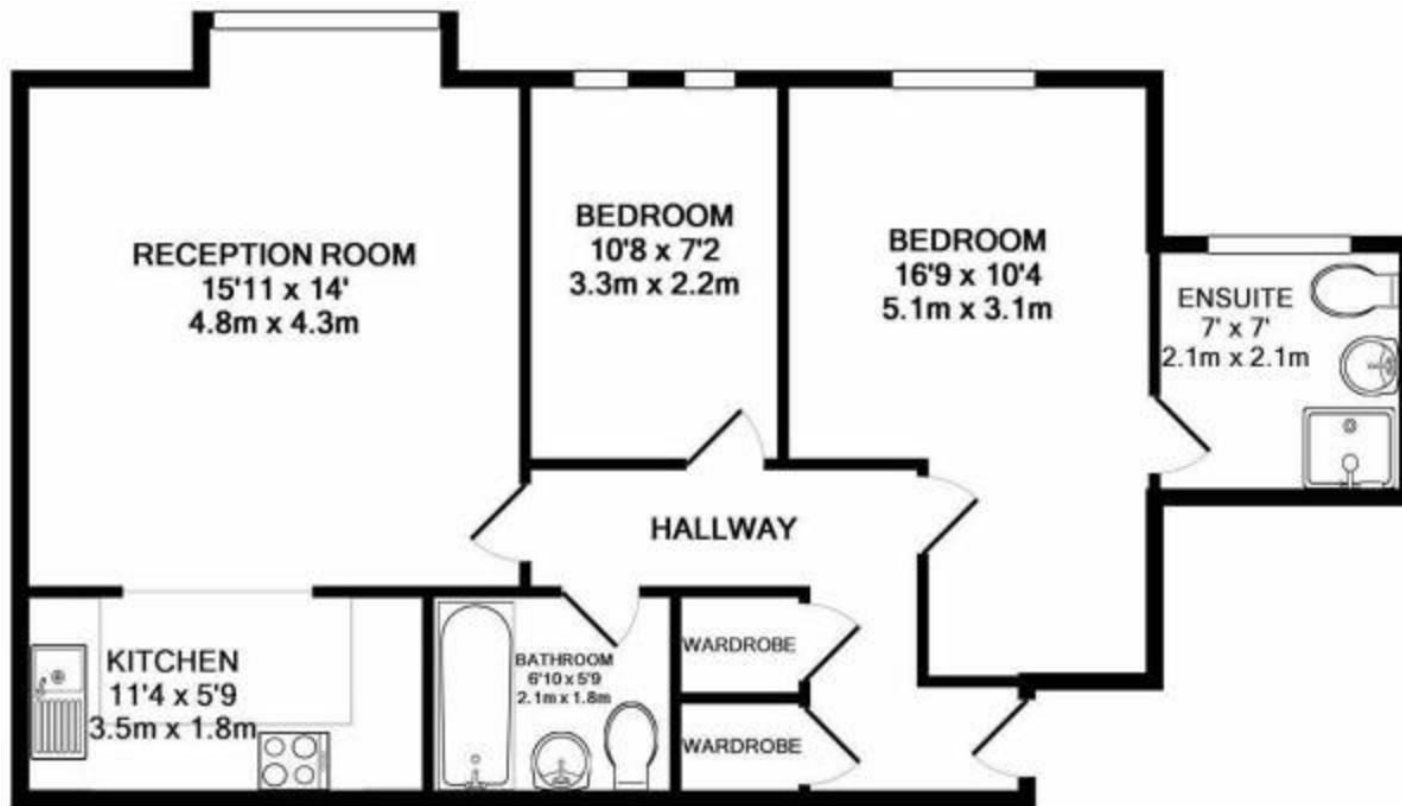
26 Waterford House

Thorney Mill Road, West Drayton, Middlesex UB7 7DL

Guide Price £265,000

Offered to the market with the benefit of NO ONWARD CHAIN is this spacious two double bedroom, two bathroom top floor apartment. Situated on a quiet gated waterside development in West Drayton offering easy access to the Elizabeth Line. Internal viewings are strongly recommended to avoid disappointment.





TOTAL APPROX. FLOOR AREA 678 SQ.FT. (63.0 SQ.M.)

Whilst every attempt has been made to ensure the accuracy of the floor plan contained here, measurements of doors, windows, rooms and any other items are approximate and no responsibility is taken for any error, omission, or mis-statement. This plan is for illustrative purposes only and should be used as such by any prospective purchaser. The services, systems and appliances shown have not been tested and no guarantee as to their operability or efficiency can be given
 Made with Metropix ©2019

Hillingdon office
 11 Crescent Parade
 Hillingdon
 UB10 OLG

Uxbridge office
 41 Belmont Road
 Uxbridge
 UB8 1QT

Hillingdon office 01895 231311
 Uxbridge office 01895 707777
 info@andrewsresidential.co.uk
 www.andrewsresidential.co.uk

Agents Note: Whilst every care has been taken to prepare these sales particulars, they are for guidance purposes only. All measurements are approximate and for general guidance purposes only and whilst every care has been taken to ensure their accuracy, they should not be relied upon and potential buyers are advised to recheck the measurements. Andrews Residential is a trading name of Halcladix Limited, a limited company incorporated in England and Wales under registration number 10898495