



# SAMPHIRE COVE

LUXURY LODGES



## A NEW RURAL HIDEAWAY

Nestled in a tranquil Cornish valley, a new rural hideaway awaits. Discover Samphire Cove, our luxury gated development at Tregoad Holiday Park that is inspired by nature and defined by luxury.

Our development is home to a collection of 12 lodges, each offering their own unique charm and comforts, but all boasting incredible valley views and sea glimpses that bring Cornwall's stunning countryside to the forefront of your rural escape.

All of our lodges enjoy open-plan living, creating a modern elegance to enhance your holiday home experience, with traditional textures and finishes that truly make your Tregoad escape a getaway like no other.

You really need to take in the magic of Samphire Cove for yourself, so we would love for you to come and visit on one of our Experience Days. It's time to get back to nature, and embrace the beauty of the Cornish countryside in your own home away from home at Samphire Cove.

Yours sincerely,

*Your Waterside Ownership Team*



WATERSIDE

## Introducing Samphire Cove at Tregoad Holiday Park

What if we told you that you didn't have to choose between coastal bliss and rural tranquillity? Samphire Cove at Tregoad Holiday Park offers the best of both worlds with 12 luxury lodges, built with the owner in mind.

This exclusive, gated development has a handful of different lodge specifications, each boasting unique elegance and grace.

'The Santorini' offers Cornwall's own Greek-inspired escape with a private hot tub, large outdoor decking, three double bedrooms and a fully equipped kitchen with an island.

Or, perhaps the heat of 'The Catalonia' is more your calling? With a stone fireplace, central wine cabinet and exposed timber beams, you can embrace your fiery Spanish desires without leaving the beautiful Cornish coastline.

Whichever style speaks your language, we know that you won't be able to resist Samphire Cove's extraordinary charm and rapture.





# There's no place like Waterside

Waterside Holiday Group offers unrivalled luxury in our four exquisite parks, located on the breath-taking Dorset and Cornwall coast.

## AWARD-WINNING

We have been quietly redefining holiday home luxury on the English Coast. With millions of pounds worth of investment, it's no wonder our homes and facilities are award-winning.

## STATE-OF-THE-ART

Stunning and stylish, our holiday homes have the latest state-of-the-art appliances to make your stay that little more luxurious. From electric fires, equipped utility rooms and sky lights to private hot tubs.

## LOCATIONS

All four of our 5-star parks are located on the Great British Coast. Blending into the hottest holiday destinations and the welcoming local community, there is a park to suit every family's needs.

## PARKING SPACES

All of our holiday homes receive a spacious personal parking space to accommodate their vehicles. A number of homes can even welcome two cars and have electric charging stations.

## SPACE TO ROAM

We pride our parks and pitches on having plenty of room for all you love. With space to have private decking, bbq areas, car parks and hot tubs, you can make the most of your pitch.

## PIPED GAS

Our piped gas supplies mean that there isn't the hassle of handling, refilling and changing cylinders, making it safe and efficient for your holiday needs.

# Tregoad

HOLIDAY PARK

★ ★ ★ ★ ★

Located in the stunning Cornish countryside, our latest holiday park is the perfect destination for those who can't get enough of hiking, biking and more. Stay in comfort, explore at leisure. It's where local tradition and adventure call home.

## Your Experience

### UNIQUE LOCATION

Discover beautiful Cornish beaches, traditional fishing villages and acres of unspoilt countryside on your doorstep.

### MADE TO EXPLORE

The perfect place to escape from the everyday hustle and bustle and get back to nature. Where tradition meets adventure.

### A TOUCH OF LUXURY

Holiday homes designed for the modern lifestyle, where luxury comes as standard. Enjoy impeccable levels of comfort and service at Tregoad.

### FUN FOR THE WHOLE FAMILY

Relax in the pool, dine in the restaurant, or explore our award-winning lakes. Our park brings the whole family together for an adventure.



# The Cornish Coast

Experience some of the delights Cornwall has to offer whether it's a day at Lantic Bay, exploring one of the delightful little fishing villages or a walk around the Eden Project, you'll be spoilt for choice with what the area around the park has to offer.

Fans of pints will enjoy the local ale and cider scene and every time you visit, you'll discover something new to fall in love with. Luscious green countryside, dramatic cliffs, golden sands and vibrant blue waters are only a snapshot of what Cornwall has to offer.

Once you've discovered the delights near to your Tregoad holiday home, you'll be sure that your Cornish adventures will forever remain a special place in your heart that you and your family will remember for years to come.

POLPERRO

LOOE



## The Three Pilchards

### Polperro

The oldest pub in Polperro, dating back to the 16th century, with lovely views of the harbour from the rooftop beer garden. Perfectly placed for the freshest local catch with a gourmet touch.



## The Blue Peter Inn

### Polperro

Award-winning family run pub on the quayside. Scrumptious menu - eat in or take away - solid roster of regional beers, and a well-earned reputation for legendary live music nights.



## Harbour Cafe

### East Looe Quay

Right on the waterside, small intimate restaurant, known for sea food feasts with fresh lobster, bass, crabs, prawns, scallops and includes wine pairing.



## Sardine Factory

### West Looe

A modern contemporary feel, with a theatre kitchen.



## The Old Sail Loft

### East Looe Quay

Good quality gastro pub food, nice wine list, cosy feel.



## Ye Olde Salutation Inne

### East Looe

Traditional family pub with good home-cooked local specialties and a real log fire. A top spot for a pasty, fish pie or plate of prawns.



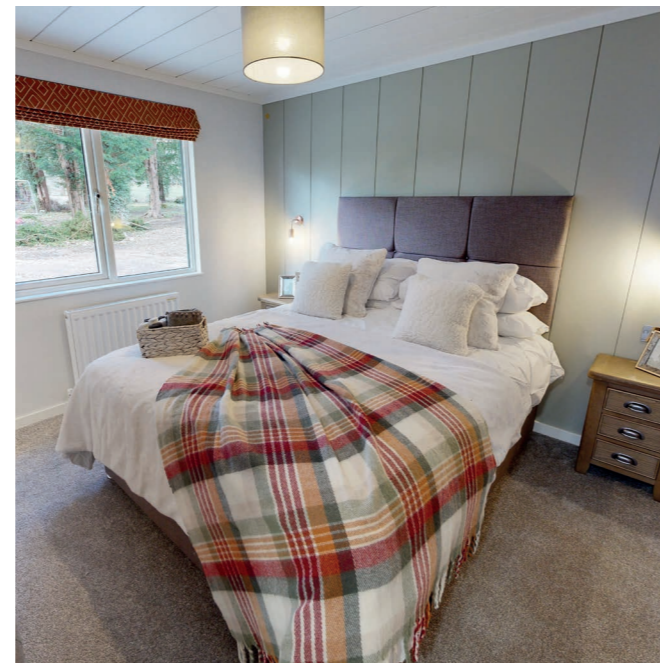


## The Santorini

Size: 45 x 22ft | Sleeps: 6

Welcome to The Santorini, the perfect retreat for those looking for a luxurious experience of unique relaxation. With simple and romantic aesthetics, this lodge is full of relaxed, cheerful atmosphere.

- Feature electric fireplace
- Vaulted ceilings and skylights
- Fully-equipped kitchen with island
- Breakfast bar
- Glass-fronted decking
- Private hot tub
- Electric car charging
- Induction hob
- Luxury millboard decking
- Wine cooler
- American fridge freezer
- Washer dryer and dishwasher
- King size bed and en suite shower room



## The Catalonia

Size: 45 x 22ft | Sleeps: 6

Welcome to The Catalonia, a remarkably stylish home with timeless charm. Influenced by the modern and vibrant region of Spain, it offers an immediate sense of warmth and comfort in a tranquil Cornish setting.

- Stone-effect electric fireplace
- Central wine cabinet
- Vaulted ceilings
- Exposed timber beams
- Glass-fronted decking area
- Luxury millboard decking
- Private hot tub
- Electric car charging
- Divan beds with feature panelling
- Fitted wardrobes in bedrooms
- Luxury wall lights and roman blinds





# ABI Westwood Lodge

Size: 44 x 14ft | Sleeps: 6

Welcome to The ABI Westwood, a stunning 2 bedroom lodge that offers style, substance and space in abundance. Lavished with every single luxury you could wish for and crafted to deliver a uniquely relaxing break.

- Striking wood feature walls
- Statement radiators
- Largest single lodge at Tregoad
- Five burner hob
- Integrated fridge freezer, washing machine, dishwasher and wine cooler
- 6 seater dining table
- Glass-fronted wrap around sun deck



# Willerby Vogue

Size: 43 x 14ft | Sleeps: 6

Welcome to The Willerby Vogue, a classic and elegant 2 bedroom holiday home, decorated with serene and calm interiors for you to enjoy.

- King size bed
- En suite
- American style fridge freezer
- Wine cooler
- Double glazing
- Air conditioned
- Patio doors
- Electric fire
- Reclining sofa



SAMPHIRE COVE

LUXURY LODGES

## Book an Exclusive Viewing

With only 12 luxury lodges available, we'd like to invite you to an exclusive viewing so you can discover Samphire Cove's unique feel for yourself before it's too late.

On one of our Tregoad Holiday Park Experience Days, you'll be able to explore the fantastic 5-star facilities across the park, enjoy a delicious lunch at the Stargazy Bar and Grill, get an exclusive viewing at our mesmerising new development alongside enjoying everything the local area has to offer.

We can't wait to welcome you in and share with you the unparalleled brilliance of Samphire Cove.

To book your exclusive viewing, you can contact us directly at

[sales@tregoadholidays.co.uk](mailto:sales@tregoadholidays.co.uk)

or give us a call on

01503 390 004



WATERSIDE



Tregoad

HOLIDAY PARK

