



Tregoad

HOLIDAY PARK

★ ★ ★ ★ ★

HOLIDAY HOME OWNERSHIP IN CORNWALL

Escape the ordinary

[WATERSIDESALES.CO.UK](http://WATERSIDESALES.CO.UK)

Tregoad  
HOLIDAY PARK  
★ ★ ★ ★ ★

Holiday Homes from £59,995

- Views of the Looe Valley
- Peaceful and scenic location
- Indoor pool
- Stargazy Bar & Grill
- Nature trails and wildlife lakes



WATERSIDE

## Waterside Holiday Group in Cornwall

As a holiday home owner in Tregoad, you'll have the best of what Cornwall has to offer right on your doorstep. From exploring the glorious beaches to tasting authentic Cornish pasties, there's so much that the whole family can enjoy time and time again.

Tregoad is our latest addition to the Waterside Family with 55 acres of glorious woodland and grounds for you to explore. Its hilltop location provides stunning views of the Cornish coast and whether you choose to relax and recharge, or explore Cornwall's fascinating landmarks and history, Tregoad has everything you need for a truly magical coastal escape.

### There's no place like Waterside

Waterside Holiday Group have been quietly redefining holiday home luxury on the English Coast, with millions of pounds worth of investment over the past 6 years, it's no wonder our homes and facilities are award-winning.

From the small things like checking your holiday home while you are away, to the big things like the facilities we have on offer, we want to make your home away from home perfect. It is these extra touches that mean so many holiday home owners choose Waterside.

TREGOAD HOLIDAY PARK,  
ST MARTIN, NR LOOE,  
CORNWALL, PL13 1PB

01503 390 004



01503 390 004 | [WATERSIDESALES.CO.UK](http://WATERSIDESALES.CO.UK)

# The Cornish Coast

Experience some of the delights Cornwall has to offer whether it's a day at Lantic Bay, exploring one of the delightful little fishing villages or a walk around the Eden Project, you'll be spoilt for choice with what the area around the park has to offer.

Fans of pints will enjoy the local ale and cider scene and every time you visit, you'll discover something new to fall in love with. Luscious green countryside, dramatic cliffs, golden sands and vibrant blue waters are only a snapshot into what Cornwall has to offer.

Once you've discovered the delights near to your Tregoad holiday home, you'll be sure that your Cornish adventures will forever remain a special place in your heart that you and your family will remember for years to come.



### The Three Pilchards

**Polperro**  
The oldest pub in Polperro, dating back to the 16th century, with lovely views of the harbour from the rooftop beer garden. Perfectly placed for the freshest local catch with a gourmet touch.



### Harbour Cafe

**East Looe Quay**  
Right on the waterside, small intimate restaurant, known for sea food feasts with fresh lobster, bass, crabs, prawns, scallops and includes wine pairing.



### Sardine Factory

**West Looe**  
A modern contemporary feel, with a theatre kitchen.



### The Blue Peter Inn

**Polperro**  
Award-winning family run pub on the quayside. Scrumptious menu – eat in or take away – solid roster of regional beers, and a well-earned reputation for legendary live music nights.



### The Old Sail Loft

**East Looe Quay**  
Good quality gastro pub food, nice wine list, cosy feel.



### Ye Olde Salutation Inne

**East Looe**  
Traditional family pub with good home-cooked local specialties and a real log fire. A top spot for a pasty, fish pie or plate of prawns.

# Days out in Cornwall



**01**  
**EDEN PROJECT,**  
BOLDELVA



**02**  
**LANTIC BAY,**  
FOWEY



**03**  
**POLPERRO,**  
CORNWALL



**04**  
**THE LOST GARDENS**  
**OF HELIGAN,**  
PENTEWAN



**05**  
**LOOE**  
CORNWALL



**06**  
**MEVAGISSEY,**  
CORNWALL



# There's no place like it

Waterside Holiday Group offers unrivalled luxury in our four exquisite parks located on the breath-taking Dorset and Cornwall coast.

Through family-ownership and knowledge that has been passed down through the generations, we have developed a strong understanding of what truly makes a family holiday experience memorable. From the small things like checking your holiday home while you are away, to the big things like the facilities we have on offer, we want to make your home away from home perfect. It is these extra touches that mean so many holiday home owners choose Waterside.

## Family Owned

Launched in 1963, the holiday group has been passed down the Jacob's family through the years, and it is these family values that give our parks that extra special family experience with fun and entertainment for all ages to enjoy. Being family-run, we understand the power and importance of creating holiday memories time and time again in a place you can call your own.



### Award-winning

We have been quietly redefining holiday home luxury on the English Coast, with millions of pounds worth of investment it's no wonder our homes and facilities are award-winning.

### Locations

All four of our 5-star parks are located on the Great British Coast. Blending into the hottest holiday destinations and the welcoming local community, there is a park to suit every family's needs.

### Space to roam

We pride our parks and pitches on having plenty of room for all you love. With space to have private decking, bbq areas, car parks and hot tubs, you can make the most of your pitch.

### State-of-the-art

Stunning and stylish, our holiday homes have the latest state-of-the-art appliances to make your stay that little more luxurious. From electric fires, equipped utility rooms, sky lights to private hot tubs.

### Parking spaces

All of our holiday homes receive a spacious personal parking space to accommodate their vehicles. A number of homes can even welcome two cars and have electric charging stations.

### Piped gas

Our piped gas supplies means that there isn't the hassle of handling, refilling, and changing cylinders, making it safe and efficient for your holiday needs.



FAMILY RUN  
FOR  
**60 years**

FOUR  
★ ★ ★ ★  
LUXURY PARKS

OVER  
**700 owners**  
ACROSS ALL 4 PARKS



## Owners' Card

On becoming a Waterside Holiday Group holiday home owner, we provide you with two Owner Cards which give you instant access and benefits that you would not receive as a regular holiday-goer. From discounts to concierge service, we want to make your time on park as memorable as possible.



### Benefits just for owners

Your Owner's Card will give you instant access and discount when on our parks.

- Free use of our facilities
- 20% discount in our bars & restaurants in all four parks
- Complimentary bus travel between Looe and Tregoad Holiday Park
- Discount to local restaurants and attractions
- Access to facilities for any guests accompanied by you
- Exclusive owners' events and discounts
- Security barrier access 24/7

### Share the love

As a holiday home owner with us you will experience all the benefits of enjoying your very own holiday home. We also want you to be able to share the experience with the people you love.

Every Card holder will receive 15 free passes for family and friends throughout the year.

And any guest accompanied by you on park will also receive access to all our facilities.

### Complimentary concierge

Our complimentary concierge service is offered to our owners only. With a range of services offered free of charge, you can take all the stress away and make the most of your precious holiday time with us.

- Bookings (on park and local)
- Heating
- Local recommendations
- Attraction bookings
- Transport arrangements
- Local event information
- Peace of mind checks
- Forgotten chargers
- Day itineraries
- Plant watering
- Local area info

### Meet other owners

Our friendly ownership community is always growing and you can keep up to date with everyone through our dedicated Facebook owners' page. We will also post information about all our exclusive events and activities here.

@WatersideGroupOwners



## Finance Options

At the Waterside you can purchase your new or pre-loved holiday home outright with a one-off payment or join the majority of our customers in taking our easy finance package.

- Low fixed rate APR
- Terms from 24 months to 120 months\*
- Early settlement available\* (T&Cs on request)



\*Maximum age limit of holiday home applies.

## Site Fees for the 2023 Season

# Tregoad

HOLIDAY PARK

★ ★ ★ ★ ★

# £5,295\*\*

### At Tregoad, you get...

- Super fast complimentary Wi-Fi
- Access to other parks facilities within the Waterside Holiday Group
- Dedicated owners' reception suite
- Hot Tubs available on each holiday home

\*\*Plus additional running costs: Metered Gas • Metered Electric • Insurance • Water • Rates. Additional charges apply to lodges.

## Lettings Package

We manage and understand booking trends to always remain reactive to market conditions and ensure we maximise your holiday home occupancy.

### Our Promise

- ✓ Fully managed and marketed by the Waterside Holiday Group
- ✓ All bookings, payments, guest correspondence, key handling, check in/check out services included
- ✓ Flexible dates – let from as little as 1 week
- ✓ Let midweek, weekends or full weeks
- ✓ Complimentary minor inventory top ups & replacements
- ✓ Fixed Rate Commission: 20% +VAT\*\*\*

\*\*\*Recharges for cleaning, linen and leisure passes may also apply



# Welcome to Tregoad

★ ★ ★ ★ ★

TREGOAD HOLIDAY PARK

## Tregoad

HOLIDAY PARK

★ ★ ★ ★ ★

Located in the stunning Cornish countryside, our latest holiday park is the perfect destination for those who can't get enough of hiking, biking and more. Stay in comfort, explore at leisure. It's where local tradition and adventure call home.

### *Your* Experience

#### Unique location

Discover beautiful Cornish beaches, traditional fishing villages and acres of unspoilt countryside on your doorstep.

#### A touch of luxury

Holiday homes designed for the modern lifestyle, where luxury comes as standard. Enjoy impeccable levels of comfort and service at Tregoad.

#### Made to explore

The perfect place to escape from the everyday hustle and bustle and get back to nature. Where tradition meets adventure.

#### Fun for the whole family

Relax in the pool, dine in the restaurant, or explore the local area. Our park brings the whole family together for an adventure.

01503 390 004 | [WATERSIDESALES.CO.UK](https://www.watersidesales.co.uk)



# Tregoad

HOLIDAY PARK

★ ★ ★ ★ ★

## Discover Tregoad Holiday Park

From picturesque Cornish fishing villages and coveted coves to historic local landmarks just a short drive inland, Tregoad is the perfect base from which to explore one of the country's most popular holiday and adventure destinations.

### The Park

Since adding Tregoad Holiday Park to the Waterside Holiday Group Family in 2020, we've launched an ambitious programme of upgrades to bring you even more comfort and amenities. You'll find a new restaurant and bar, super fast Wi-Fi, as well as some familiar favourites, like the indoor pool.

With a range of modern holiday home options available, there's something to suit everyone.

### Speak to our team

For more information on holiday ownership,  
call or visit:

01503 390 004 | [watersidesales.co.uk](https://watersidesales.co.uk)



## Wine & Dine

Our Stargazy Bar & Grill offers fresh local specialties, as well as serving some of Cornwall's signature tipples in our bar and terrace area.

And we also encourage you to explore some of the foodie hotspots on our doorstep. You'll find fresh fish, shellfish and signature Cornish cream teas in nearby Looe, Polperro and Fowey. It's a gastronomic paradise.



WINE & DINE



Outdoor pool concept to be built in 2024, subject to planning



## Everything you need!

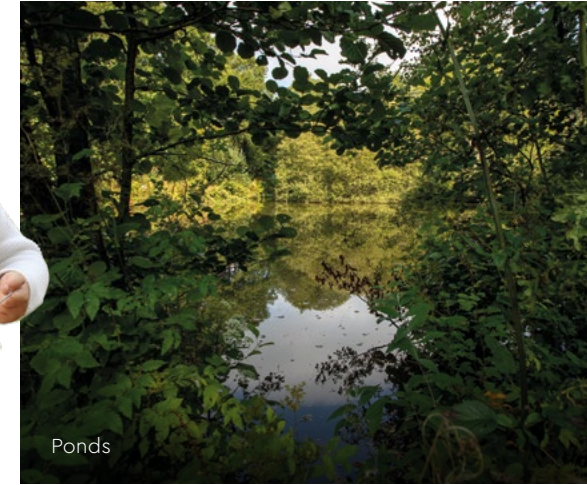
We think we've thought of everything, but we're still only getting started. Here's how to keep busy at Tregoad...

- Indoor pool
- Stargazy Bar & Grill
- Super fast Wi-Fi
- Onsite shop
- Launderette
- Kids' adventure play area
- Dog walking area
- Family room with pool table
- Wildlife lakes & nature trails
- Private decking & BBQ area available for all holiday homes



## Wildlife, Walks & Lakes

Step into nature at Tregoad with our peaceful woodland area, bursting with wildlife. New for 2022, we've added a bug hotel, owl box and natural bee hive to our grounds, making our Holiday Park a welcoming habitat for all friendly creatures.



Ponds



Trails



Bug hotel



55 Acres

of park to explore.

£25,000

Invested towards wildlife access projects.

Forest school

Recently introduced in our grounds.

Dog walking

In beautiful surroundings.



# Tregoad

HOLIDAY PARK

★ ★ ★ ★ ★

## Holiday Homes from £59,995

TO DISCOVER ALL OUR STOCK, VISIT THE PARK.



Victory Faraday



Willerby Vogue



ABI Westwood



Victory Torino



3 premium lodge plots available call today



NEW FOR 2023

# Plaidy Point

South-facing with glorious sea views, Plaidy Point is in the ideal spot to sit and watch the sunset.

Breathtaking valley & sea views

Generously spaced plots

Two premium car parking bays per pitch

Piped gas

Superfast Wi-Fi

Space for large decking areas

Hot Tubs available

BBQs welcome

South facing development

Perfectly located to enjoy the sunset

Premium landscaping

Cul-de-sac layout (low traffic)

## Holiday Homes from £59,995

Holiday homes to buy now. Book an experience day today!



# SAMPHIRE COVE

LUXURY LODGES

RURAL LUXURY LIVING

ARRIVING SPRING 2023

Above the rocks where samphire blows.  
Lies a quiet valley where the green fern grows.  
Nestled amongst them a new set  
of luxury holiday homes.

**New gated development at Tregoad Holiday Park.**

Within the Cornish valley lies a new set of luxury lodges with every home offering a view to settle the soul and visit time and time again.  
A gated community with a limited set of lodges is arriving at Tregoad Holiday Park in the Spring of 2023.

Our new exclusive lodges are designed with comfort and style in mind and we're giving you the chance to see it first.

Book your viewing today!

**Tregoad**  
HOLIDAY PARK  
\*\*\*\*\*

## We are also in Dorset



### Bowleaze Cove

HOLIDAY PARK & SPA  
\*\*\*\*\*

- Five star facilities
- Coastal location
- Luxurious spa
- Indoor & outdoor pool
- Multiple bars and restaurants

HOLIDAY HOMES FROM  
**£59,995**

Bowleaze Cove, Weymouth  
Dorset DT3 6PP  
**01305 836 836**

### Chesil Beach

HOLIDAY PARK  
\*\*\*\*\*

- Overlooking Chesil beach
- Indoor pool
- Entertainment for everyone
- Award-winning restaurant
- Easy access to Weymouth and Portland

HOLIDAY HOMES FROM  
**£59,995**

Portland Road, Weymouth  
Dorset DT4 9AG  
**01305 752 566**

### Osmington Mills

LODGE PARK  
\*\*\*\*\*

- Luxury lodges
- Outdoor pool
- Idyllic woodland location
- Children's play park
- Sea views

HOLIDAY LODGES FROM  
**£199,995**

Osmington Mills, Weymouth  
Dorset DT3 6HB  
**01305 818 171**

**Our park locations**

**Tregoad**  
HOLIDAY PARK  
\*\*\*\*\*  
Cornwall PL13 1PB

**Chesil Beach**  
HOLIDAY PARK  
\*\*\*\*\*  
Weymouth DT4 9AG

**Osmington Mills**  
LODGE PARK  
\*\*\*\*\*  
Weymouth DT3 6HB

**Bowleaze Cove**  
HOLIDAY PARK & SPA  
\*\*\*\*\*  
Weymouth DT3 6PP



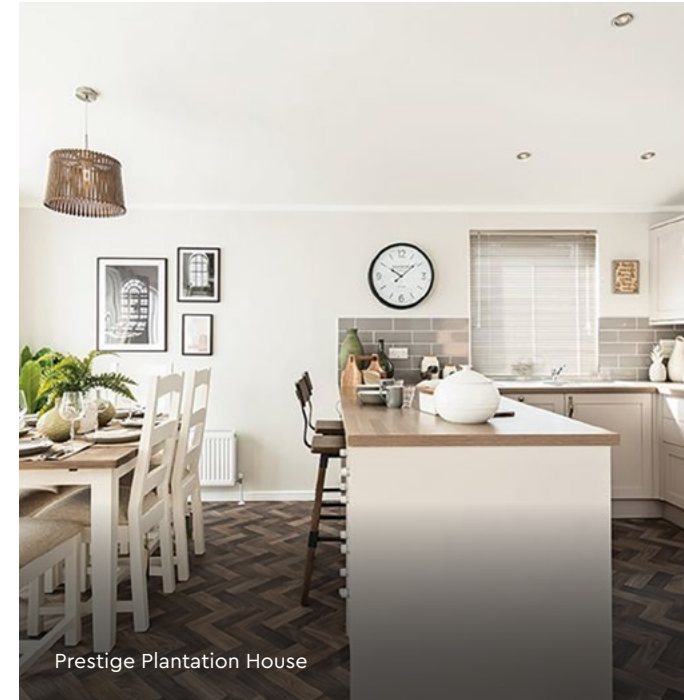
Victory Lockwood



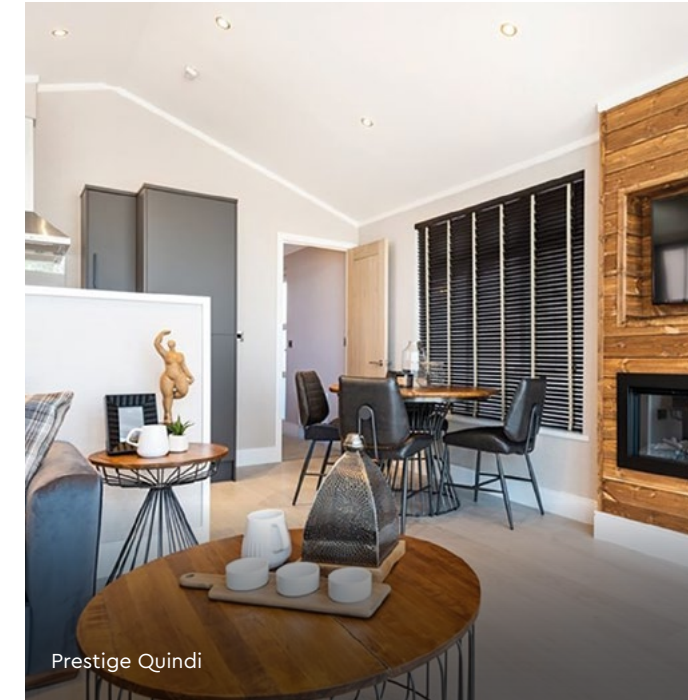
Willerby Vogue



Willerby Waverly



Prestige Plantation House



Prestige Quindi

**Osmington Mills**  
 LODGE PARK  
 ★ ★ ★ ★ ★

**Holiday Lodges**  
**from £199,995**

TO DISCOVER ALL OUR STOCK,  
 VISIT THE PARK.

**Bowleaze Cove**  
 HOLIDAY PARK & SPA  
 ★ ★ ★ ★ ★

**Chesil Beach**  
 HOLIDAY PARK  
 ★ ★ ★ ★ ★

**Holiday Homes**  
**from £59,995**

TO DISCOVER ALL OUR STOCK,  
 VISIT THE PARK.



Sunseeker Infinity



ABI Westwood



Aspire Santorini



Aspire Rustica

## 5 Easy steps to purchasing your holiday home

1

Fall in love with the park

2

Make sure the running costs are comfortable for you

3

Find a beautiful holiday home & choose an available location to put it on

4

Pay a deposit & arrange a date to financially complete the purchase

5

Move in & start enjoying your new lifestyle within 3 weeks!

Book your  
experience  
day

### Next steps...

Securing your holiday home is quick and simple and we guarantee you'll wonder why you haven't done this sooner. But we would recommend a personal guided tour before you make any decisions on your Waterside park and location. We're excited to introduce you to our fabulous parks and welcome you to the Waterside way of life. You deserve this!

For more information on holiday home ownership, call or email

01503 390 004

INFO@WATERSIDESALES.CO.UK

## FAQ's

### Why should I choose the Waterside Group?

We were established in 1963, and ever since we have sought to be the market leaders within our industry. We seek to provide an unrivalled holiday home ownership experience with service to reflect the sought after holiday homes on the prestigious park. Our continual programme of investment has seen millions of pounds invested to improve our parks and the service that we offer, and this will continue moving forward. Most importantly, our commitment to service and personal connection with our holiday home owners is extremely important to us. We are here to help you every step of the way.

### Can my friends & family visit?

Most certainly! For many, being able to invite family and friends to stay is part of the joy of owning a holiday home. We are happy to make the arrangements and greet your family and friends onto the park if you are unable to. Use of all the leisure facilities is complimentary for all of your immediate family (parents, grandparents, children and grandchildren). Wider family (such as uncles, aunts, brothers and sisters) receive complimentary entry to our entertainment venues and are very welcome to use the leisure facilities for a small charge. There is no external membership available to our facilities, all the facilities are exclusively for owners and holiday makers.

### Can I choose the location of my holiday home?

Yes, for new and pre-loved holiday homes we will show you which locations are suitable for the size of holiday home you are purchasing and then the choice is yours!

### Are there age limits on the holiday home?

No, we do not have an age limit for the holiday homes on our parks, however we do require them to be kept in a good condition. The licence was drawn up in association with our industry trade body, the British Holiday Home and Parks Association (BH&HPA), in association with the Office of Fair Trading.

### Can I make money from letting out the holiday home?

No, the holiday home is a lifestyle investment, but you can help offset the site fees through our fully managed letting scheme.

### Can I live in my holiday home?

No, your holiday home is designed to be enjoyed as your perfect retreat, not as a permanent residence.

### How many months is the park open for?

Bowleaze Cove, Chesil Beach and Tregoad are open from the 1st March to the 15th January every year giving you an amazing 46 week season. This means you can enjoy your holiday home over the Christmas and New Year period if you so wish. Most on-park facilities are open from mid March until the end of October. Osmington Mills is open from 15th March to the 15th January.

### Do I own the land?

No, you own your holiday home, but not the land upon which it is sited.

### Can I bring pets?

Certainly. As an owner you are welcome to bring your pet with you particularly as the surrounding area is fantastic for dog walking. As it is a family park we do restrict certain breeds of dog (please ask for details) and request that they are kept on a lead whilst in the park.

### What do site fees cover?

The annual site fees include park maintenance, security and also all elements of the owners package which is why The Waterside Group is so special.

### Do you offer insurance for holiday homes?

Yes, and we are able to provide you with a quotation.

### Is it possible to let my holiday home?

Yes, fully managed letting packages are available through our award-winning holiday's brand.

Enjoy your  
new home  
within  
**3 weeks!\***

\*Subject to stock and pitch and decking availability.



WATERSIDE



FAMILY RUN  
FOR  
**60 years**

FOUR  
★ ★ ★ ★  
LUXURY PARKS

OVER  
**700 owners**  
ACROSS ALL 4 PARKS



For more information on holiday home ownership, call or email  
01503 390 004 | [INFO@WATERSIDESALES.CO.UK](mailto:INFO@WATERSIDESALES.CO.UK)