

Bingley Court, Canterbury, Kent, CT1 2SX

£1,050 PCM



Bingley Court

Canterbury, Kent CT1 2SX

This apartment is located close to Canterbury East Station and only a few minutes' walk from the City Centre. The apartment is on the first floor and can be accessed by lift or stairs. There is wooden flooring in the hallway and open plan kitchen and living area. It also benefits from a small balcony area which is big enough to sit on and enjoy the summer evenings. The entrance hallway then leads to bathroom with a bath and shower, double bedroom and spacious large open plan lounge/dining area and kitchen complete with fridge freezer and washing machine. Council tax band C.

Available from January 2026

Council Tax Band C- Canterbury City Council

Furnished

Rent is EXCLUSIVE of Electricity, internet and water charges.

Rent £1,050

Deposit is equal to 5 weeks rent £1,211.53

This can be paid anytime, until your tenancy begins (EXCLUDING Holding Deposit)

Parking: An allocated parking permit for the communal/residents car park

Unfortunately no pets/smoking permitted in the apartment building

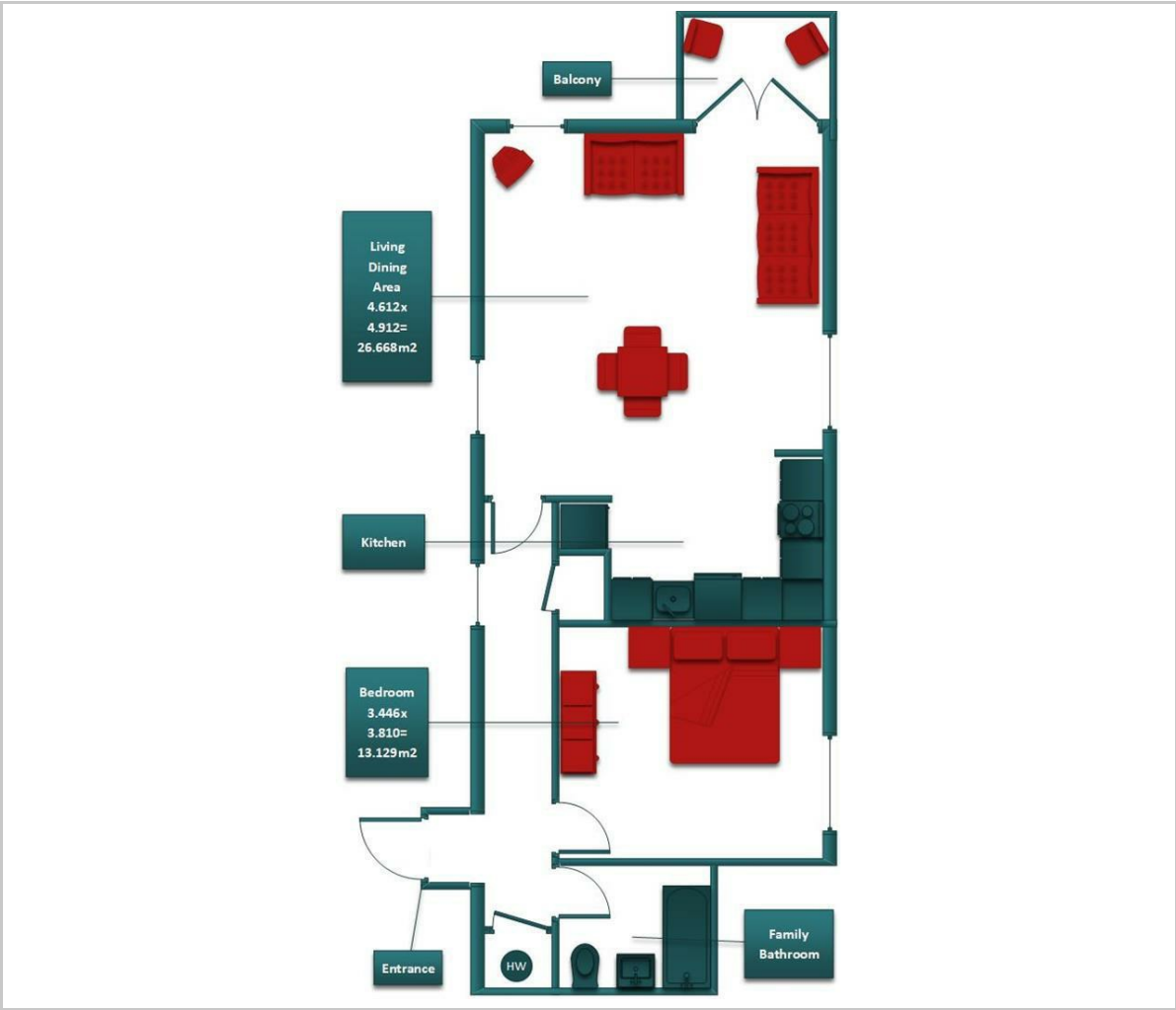
Viewings strictly by appointment only

Please refer to the fee's tab on our website (www.sallyhatcher.co.uk) for all information on fee's and deposit options





Floor Plan



Viewing

Please contact us on 01227 733888 if you wish to arrange a viewing appointment for this property or require further information.

These particulars, whilst believed to be accurate are set out as a general outline only for guidance and do not constitute any part of an offer or contract. Intending purchasers should not rely on them as statements of representation of fact, but must satisfy themselves by inspection or otherwise as to their accuracy. No person in this firms employment has the authority to make or give any representation or warranty in respect of the property.

Area Map



Energy Efficiency Graph

