

Updown Way, Chatham, Canterbury, CT4 7TP

£1,550 Per Month

Sally Hatcher  
*estates*





## Updown Way

### Chartham, Canterbury CT4 7TP

Unique opportunity to rent this lovely semi-detached three bedroom house which has beautiful views over the Downs. This house also has a large garden, garage and additional parking in front of the garage. Entrance hallway leading to large sitting/dining room with access to rear garden there is also the added benefit of a large conservatory also with access to the rear enclosed garden. Fully fitted kitchen with space for washing machine, large fridge freezer downstairs WC. Upstairs has a large master bedroom, family bathroom with white bathroom suite and shower over the bath. There is a further double and a single sized bedroom.

Rent £1,550 per month - EXCLUSIVE of Gas, Electricity, Council Tax and Water Charges

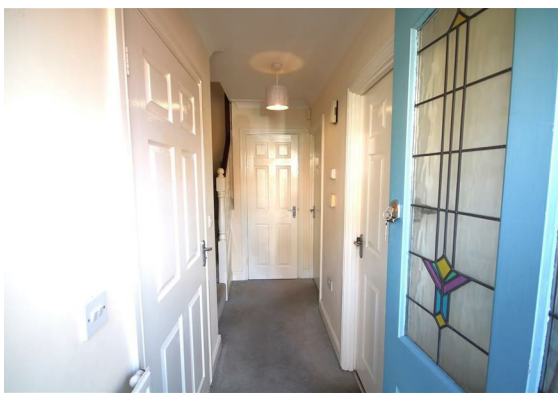
Deposit: £1788.46 This can be paid anytime until your tenancy begins (EXCLUDING Holding Deposit)

Available early November 2025 for a 12 months tenancy agreement

Unfurnished

Council Tax Band D

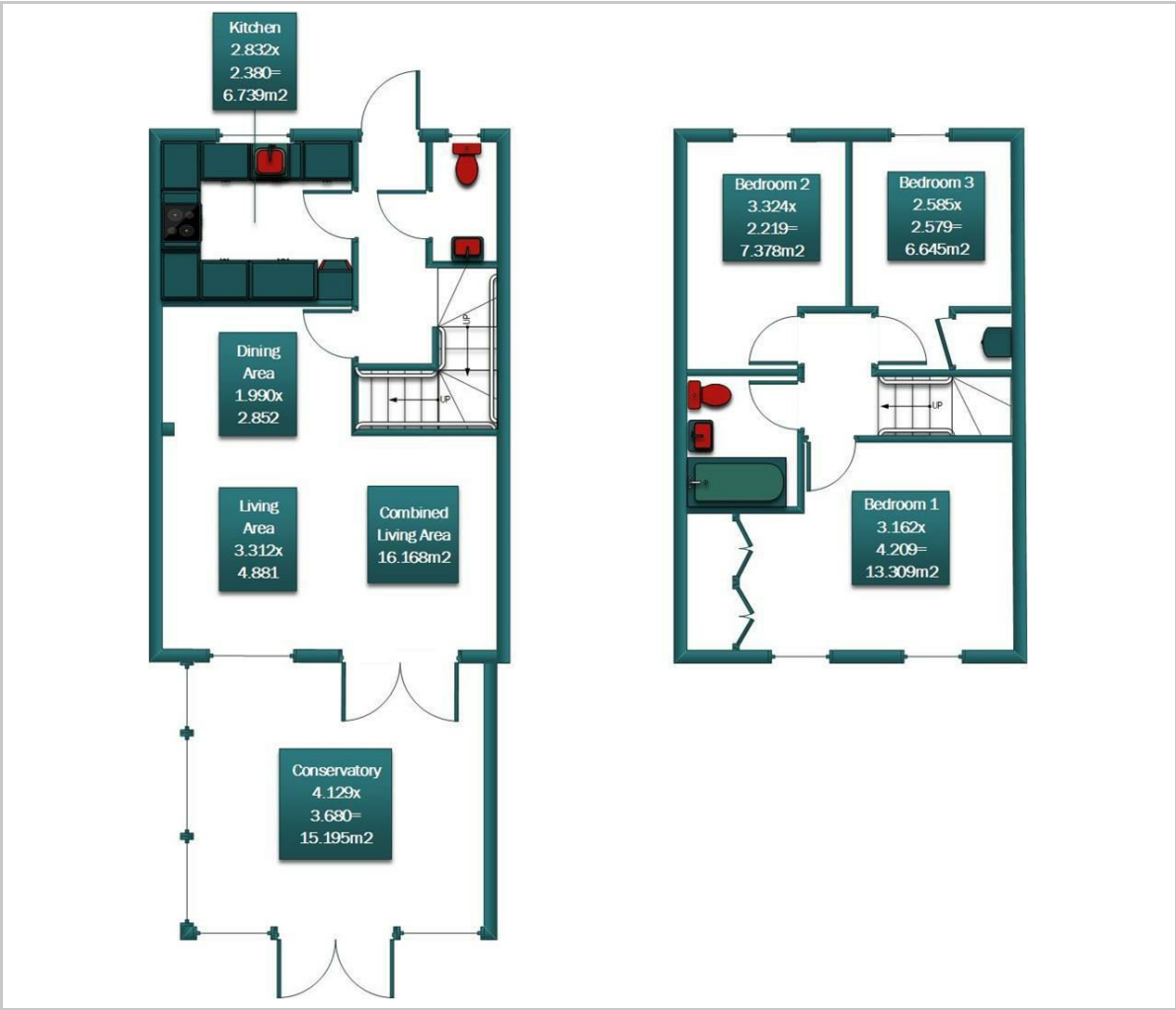
Please refer to the fee's tab on our website ([www.sallyhatcher.co.uk](http://www.sallyhatcher.co.uk)) for all information on fee's and deposit options







Floor Plan



Viewing

Please contact us on 01227 733888 if you wish to arrange a viewing appointment for this property or require further information.

These particulars, whilst believed to be accurate are set out as a general outline only for guidance and do not constitute any part of an offer or contract. Intending purchasers should not rely on them as statements of representation of fact, but must satisfy themselves by inspection or otherwise as to their accuracy. No person in this firms employment has the authority to make or give any representation or warranty in respect of the property.

Area Map



Energy Efficiency Graph

