

Regency Place, Canterbury, Kent, CT1 1YS

£1,400 PCM



Regency Place

Canterbury, Kent CT1 1YS

Spread over three floors and located close to Canterbury city centre this spacious four bedroom house with a study/playroom. The property benefits from a new kitchen, re-decoration and some new carpets.

The entrance hallway leads to lounge and large kitchen with a dining area. The garden is enclosed which is great for those summer BBQ's. On the first floor there are two double bedrooms, bathroom with shower over and the spare room which can be used as an additional study room or playroom. Move to the second floor you will find two further double bedrooms. Parking is available in an allocated parking space with additional parking on street subject to Canterbury city council parking restrictions and permits. Council tax band C.

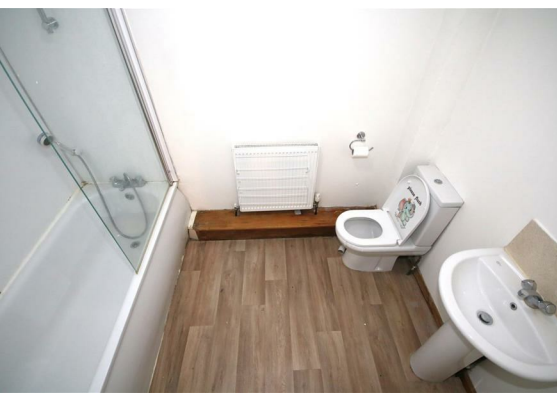
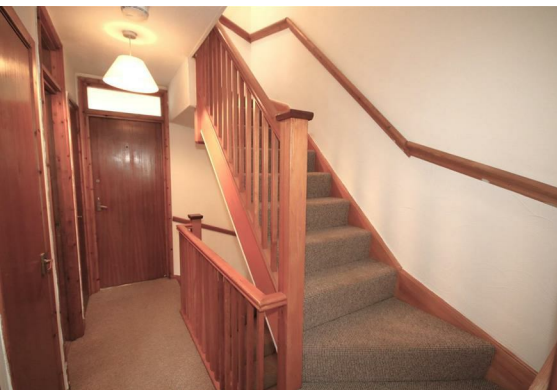
Rent is £1400

Deposit is £1,615.38 (equal to 5 weeks rent)

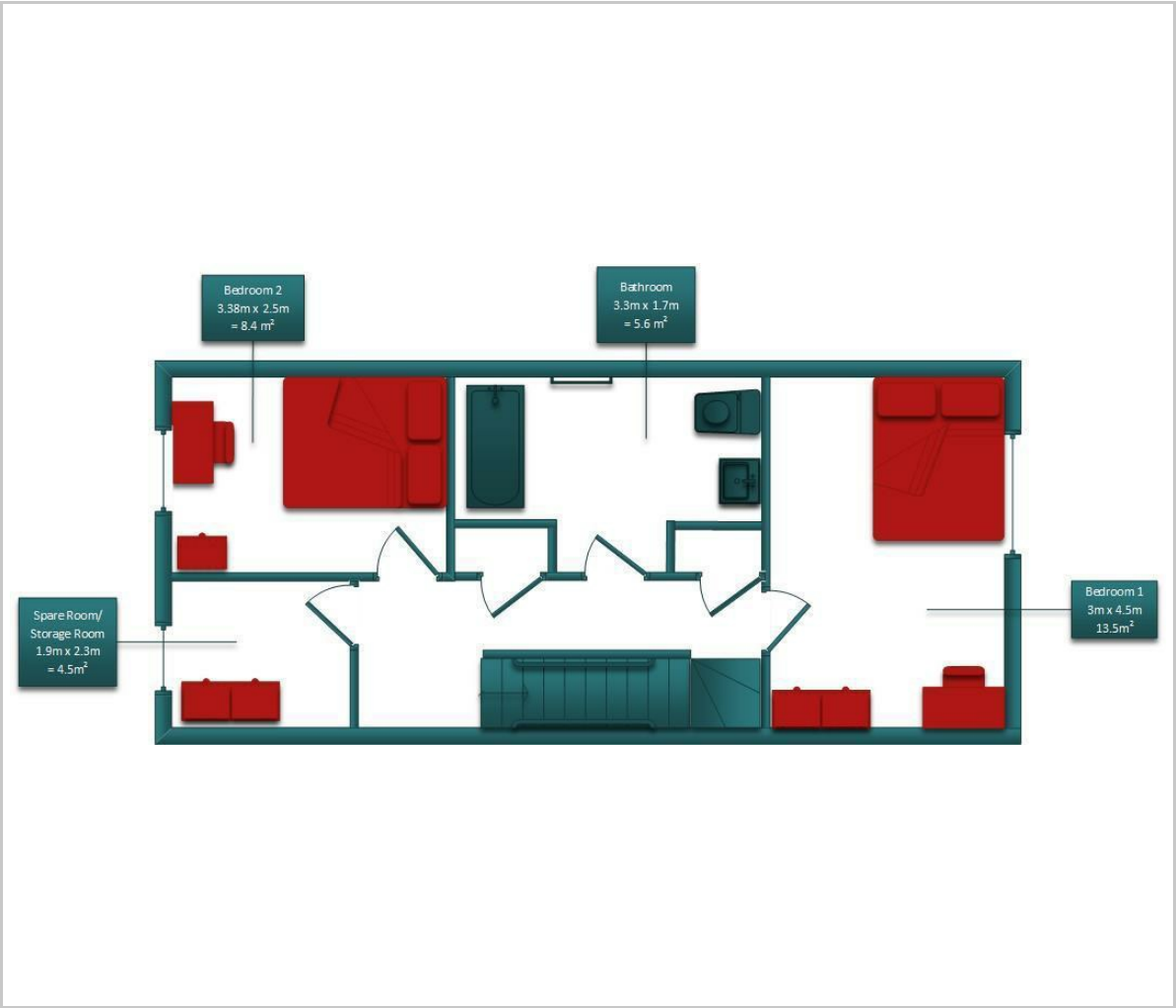
Viewings strictly by appointment only

Please refer to the fee's tab on our website (www.sallyhatcher.co.uk) for all information on fee's and deposit options





Floor Plan

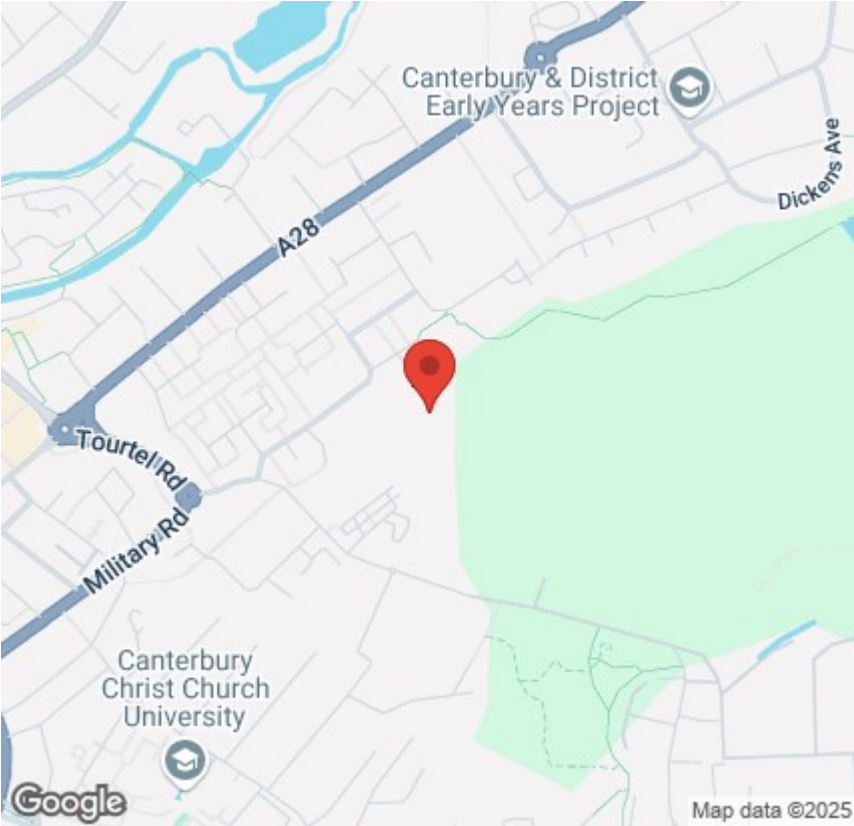


Viewing

Please contact us on 01227 733888 if you wish to arrange a viewing appointment for this property or require further information.

These particulars, whilst believed to be accurate are set out as a general outline only for guidance and do not constitute any part of an offer or contract. Intending purchasers should not rely on them as statements of representation of fact, but must satisfy themselves by inspection or otherwise as to their accuracy. No person in this firms employment has the authority to make or give any representation or warranty in respect of the property.

Area Map



Energy Efficiency Graph

