

Mindenhurst

Deepcut

CONSUMER
CODE FOR
HOME BUILDERS

www.consumercode.co.uk

Bovis
Homes 

Mindenhurst

Deepcut

1 and 2 bedroom apartments

Cyprus House

3 bedroom home

The Hazel

4 bedroom home

The Juniper

Affordable housing

2 bedroom home

The Holly

The Spruce

The Chestnut

bcp bin collection point

bs bin store

cs cycle store

sh scout hut

v visitor space

h hedgehog highway

5 bedroom home

The Birch



The development layout, landscaping and tenure of all dwellings may be subject to change throughout the course of the development.



Welcome to Mindenhurst

This exciting new development on the British Army's former Princess Royal Barracks, will feature a range of facilities including a primary school, pub, shops, sports and play areas, plus woodland walks and cycle paths.

Deepcut itself has a café, takeaways and a Community Centre that hosts many classes and events, plus a football and golf club. The Basingstoke Canal is perfect for a scenic stroll, Frimley Lodge Park is great for children, and it's only a few minutes' drive to convenience shops in Frimley Green. In neighbouring Frimley you'll find supermarkets, shops, medical, sports and leisure facilities as well as a selection of schools. Nearby Camberley and Farnborough both have shopping centres for those seeking retail therapy.

Train services run to London Waterloo in as little as 35 minutes from Brookwood Station, which is less than 4 miles away and services also run from Frimley, Farnborough and Camberley.

Junction 4 of the M3 is only 4 miles away and links you to Basingstoke, Winchester and Southampton, or take Junction 3, less than 7 miles, for the M25 and London, 38 miles away. Woking is a 10-mile journey and Guildford is a 15-mile trip via the A331.

For international flights Heathrow Airport takes around 35 minutes by car.

Mindenhurst offers you an impressive range of Bovis Homes designed for modern living. Chill out in open-plan living areas, cook up a storm in our stylish fitted kitchens, bring the outside in with bi-fold doors and relax with the privacy of master bedrooms with en-suites.

So, if you're looking for a quality new home in the Surrey countryside with great commuter links, your search ends here!



The perfect position

Education for everyone

Mindenhurst will have its own primary school and in Deepcut the Blackdown Pre-School is rated 'outstanding' by Ofsted. Frimley offers many primary schools including Sandringham School, Cross Farm Infants School, Mychett Primary School and Frimley Church of England Junior School.

For senior students there's the Tomlinscote School and Sixth Form at Frimley, or The Sixth Form College at Farnborough, both rated 'outstanding' by Ofsted. The independent Salesian College and Farnborough Hill, in Farnborough, take pupils aged 11 to 18.


Camberley Shopping Centre
0.4 miles | 10 min drive



Pine Ridge Golf Club
1.5 miles | 5 min drive



Blackdown Pre-school
1.1 miles | 5 min drive



Waitrose supermarket
2.4 miles | 7 min drive



Mindenhurst

Brookwood Railway Station
4 miles | 10 min drive



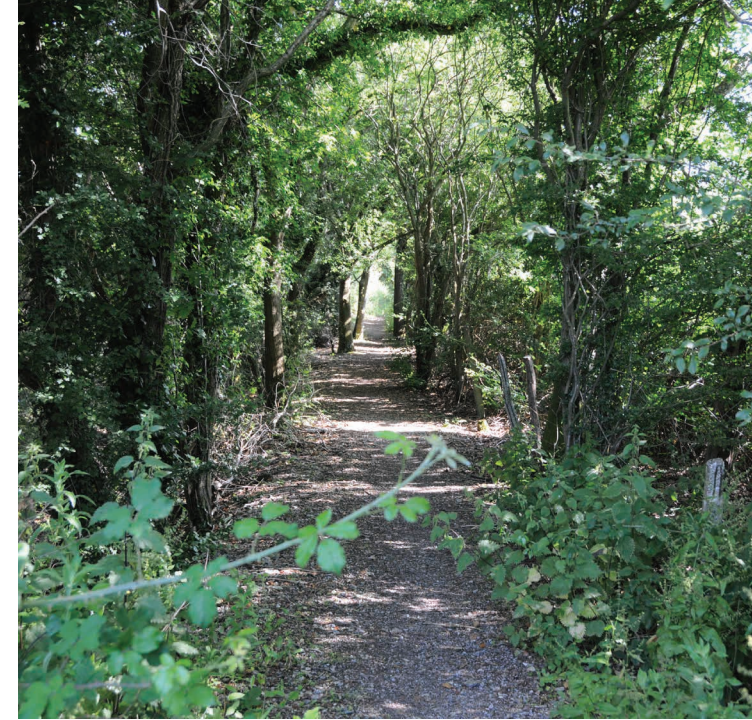
Frimley Lodge Park
1.4 miles | 4 min drive



Deepcut Community Football Club
1.6 miles | 5 min drive



Cross Farm Infant Academy
1.5 miles | 5 min drive

A community to be proud of

We know that the area surrounding your new home is just as important as the features within your new property. As well as bringing a range of new homes to the area, we also make a commitment, these commitments are chosen based on the needs of our new community and we work with the local council to deliver them. We are proud to have invested over **£1 million** in local schemes to support the community surrounding your new home in Deepcut.

“Bovis Homes have invested more than **£1 million** towards community schemes”

These schemes include:

Sports and leisure



Public art



Waste management



Improved public transport services



Libraries



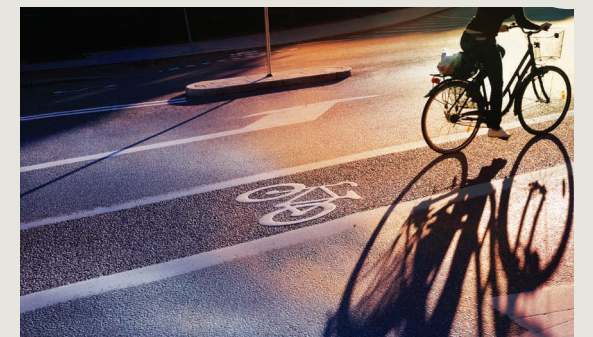
Public open space improvement



Primary schools



Cycle routes



Enhance and personalise your new home with upgrades and extras from our **Select** range

Customise your kitchen with stylish worktops and the latest modern appliances, and personalise your bathrooms with stunning ceramics. Using the **Select** range, there are various options allowing you to create your perfect property which is truly unique to you.

We offer a range of appliances for your kitchen with various brands to choose from. You can personalise every space in your home from kitchen electrics to bedroom additions where we have lots of choices available.

If you have a preference for flooring, you can select from our diverse range that includes luxurious carpets, stylish Karndean, ceramics and vinyl.

Pick up a **Select** brochure from your sales consultant today to find an extensive list of items available. Such as:

- Quartz kitchen worktops
- Integrated fridge freezer
- Integrated dishwasher
- Flooring
- Built-in wardrobes
- Upgraded tiling in main bathroom and en suite

Purchase assistance schemes

Wherever you are in the home-buying market - a first-time buyer, looking to step up the property ladder or a downsizer - we have a variety of great purchase assistance schemes!

Smooth Move

Are you an existing home owner? Our Smooth Move service is designed to help you sell your old property quickly so that you can make the move into a brand new Bovis Home. We'll deal with the estate agents on your behalf, and even pay the estate agents' fees when your house is sold!

Home Exchange

Are you an existing home owner? Our Home Exchange scheme is the simple way to make sure you don't lose out on your brand new Bovis Home - and saves you time and money along the way. We'll buy your property at market value, therefore there are no last minute 'drop-outs', you avoid estate agents fees, and there are no price renegotiations late in the day!



A home designed with you in mind

We are constantly reviewing our houses and ensuring they are everything that our customers want in a home. We are proud to have developed and launched a new range of homes.

These homes have been created to embrace modern design and styling, whilst retaining classic architectural traditions. An integral part of the design process for our new range of homes was to ensure they have a real wow factor and eye-catching kerb appeal. From designing external elevations to create attractive street scenes through to maximising the flow and size of the rooms, the homes include a variety of features to capture the attention.

The size, positioning and number of windows in our new housing collection have created bright and airy homes, this mixed in with the higher ceilings gives your property a spacious feel.

The flow and layout of the new homes has been a key consideration to accommodate today's lifestyles, with a focus on future living. With the kitchen at the heart of the home, impressive family spaces have been included within them to create sociable living areas, while attention on master bedrooms and en suites has given the homes added desirability.

Many of the properties include popular bi-fold doors helping to bring the outside in and enhance the gardens as an extended living area.



Firm foundations means peace of mind for you

When buying a new home, you want to be sure you can trust your builder. Choosing a Bovis Home gives you the peace of mind that comes from choosing a company that has been building some of the **best homes in the UK for more than a hundred years.**

We pride ourselves on being one of the country's leading housebuilders and have established an enviable reputation for the quality of our build and design, specification and customer service.

Each Bovis Home is carefully planned both to meet your needs and to integrate into the existing location.

We will often use local materials and reflect regional features. Trees are retained wherever possible and new landscaping added, along with footpaths and cycleways in many cases to help create a wonderful place to live.



Cyprus House

1 and 2 bedroom apartments

bovishomes.co.uk

**Bovis
Homes** 

Cyprus House

1 and 2 bedroom apartments

Plots 82	metres	feet / inches
Kitchen / sitting / dining area	6.07 x 4.60	19' 11" x 15' 1"
Bedroom 1	4.09 x 2.89	13' 5" x 9' 6"
Bedroom 2	3.35 x 3.25	11' 0" x 10' 8"

Plots 85 and 88	metres	feet / inches
Kitchen / sitting / dining area	6.07 x 4.60	19' 11" x 15' 1"
Bedroom 1	4.09 x 2.89	13' 5" x 9' 6"
Bedroom 2	3.40 x 3.35	11' 2" x 11' 0"

Plots 83, 86 and 89	metres	feet / inches
Kitchen / sitting / dining area	7.55 x 3.06	24' 9" x 10' 1"
Bedroom 1	4.22 x 3.71	13' 10" x 12' 2"

Plots 84	metres	feet / inches
Kitchen / sitting / dining area	5.40 x 4.35	17' 9" x 14' 3"
Bedroom 1	4.35 x 2.75	14' 3" x 9' 0"
Bedroom 2	3.63 x 3.50	11' 11" x 11' 6"

Plots 87 and 90	metres	feet / inches
Kitchen / sitting / dining area	5.40 x 4.54	17' 9" x 14' 11"
Bedroom 1	4.54 x 2.75	14' 11" x 9' 0"
Bedroom 2	3.63 x 3.50	11' 11" x 11' 6"

Cyprus House | SDEEP Plots 82-90 |

This floorplan has been produced for illustrative purposes only. Room sizes shown are between arrow points as indicated on plan. The dimensions have tolerances of + or -50mm and should not be used other than for general guidance. If specific dimensions are required, enquiries should be made to the sales consultant.

ovn	oven	ldr	larder
h	hob	ffzs	fridge freezer space
ds	dishwasher space	cup'd	cupboard
ws	washing machine space	◀ ▶	measuring points

Please refer to the sales consultant for specific plot details as the illustrations shown are computer generated impressions of how the property may look so are indicative only. External details or finishes may vary on individual plots and homes may be built in either detached or attached styles depending on the development layout. Exact specifications, window styles and whether a property is left or right handed may differ from plot to plot.

The floorplans shown are not to scale. Measurements are based on the original drawings. Slight variations may occur during construction.

Produced by the Vistry Group Design Studio.

When you have finished with this leaflet please recycle it.

SDEEP GD56985 / 01.21



Second floor



First floor



Ground floor





The Holly

2 bedroom home

bovishomes.co.uk

**Bovis
Homes** 

The Holly

2 bedroom home

Ground floor	metres	feet / inches
Kitchen / dining room	4.74 x 3.25	15' 6" x 10' 7"
Sitting room	3.72 x 3.67	12' 2" x 12' 0"

First floor

Bedroom 1	3.59 x 3.20	11' 9" x 10' 5"
Bedroom 2	4.74 x 3.39	15' 6" x 11' 1"

The Holly | X204 01 vt SDEEP |

This floorplan has been produced for illustrative purposes only. Room sizes shown are between arrow points as indicated on plan. The dimensions have tolerances of + or -50mm and should not be used other than for general guidance. If specific dimensions are required, enquiries should be made to the sales consultant.

ovn	oven	ldr	larder
h	hob	ffzs	fridge freezer space
ds	dishwasher space	cup'd	cupboard
ws	washing machine space	< >	measuring points

Please refer to the sales consultant for specific plot details as the illustrations shown are computer generated impressions of how the property may look so are indicative only. External details or finishes may vary on individual plots and homes may be built in either detached or attached styles depending on the development layout. Exact specifications, window styles and whether a property is left or right handed may differ from plot to plot.

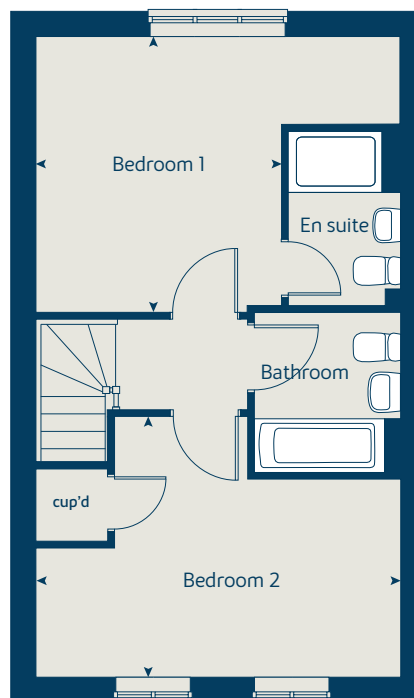
The floorplans shown are not to scale. Measurements are based on the original drawings. Slight variations may occur during construction.

Produced by the Vistry Group Design Studio.

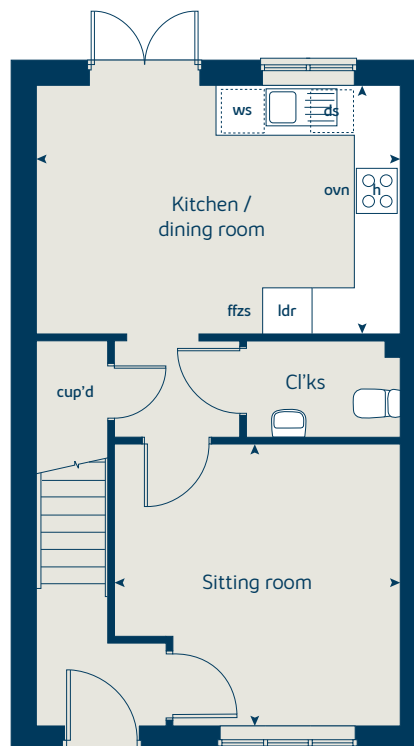
When you have finished with this leaflet please recycle it.

SDEEP GD56985 / 12.20

First floor



Ground floor





The Hazel

3 bedroom home

bovishomes.co.uk

**Bovis
Homes** 

The Hazel

3 bedroom home

Ground floor	metres	feet / inches
Kitchen / dining room	5.19 x 2.99	17' 0" x 9' 9"
Sitting room	4.17 x 3.66	13' 8" x 12' 0"

First floor	metres	feet / inches
Bedroom 1	3.54 x 3.28	11' 7" x 10' 9"
Bedroom 2	2.95 x 2.73	9' 8" x 9' 0"
Bedroom 3	2.44 x 2.15	8' 0" x 7' 0"

The Hazel | X305 01 vt SDEEP |

This floorplan has been produced for illustrative purposes only. Room sizes shown are between arrow points as indicated on plan. The dimensions have tolerances of + or -50mm and should not be used other than for general guidance. If specific dimensions are required, enquiries should be made to the sales consultant.

* Windows apply to selected plots only. Please see sales consultant for further details.

ovn	oven	ffzs	fridge freezer space
h	hob	cup'd	cupboard
ds	dishwasher space	◀ ▶	measuring points
ws	washing machine space		

Please refer to the sales consultant for specific plot details as the illustrations shown are computer generated impressions of how the property may look so are indicative only. External details or finishes may vary on individual plots and homes may be built in either detached or attached styles depending on the development layout. Exact specifications, window styles and whether a property is left or right handed may differ from plot to plot.

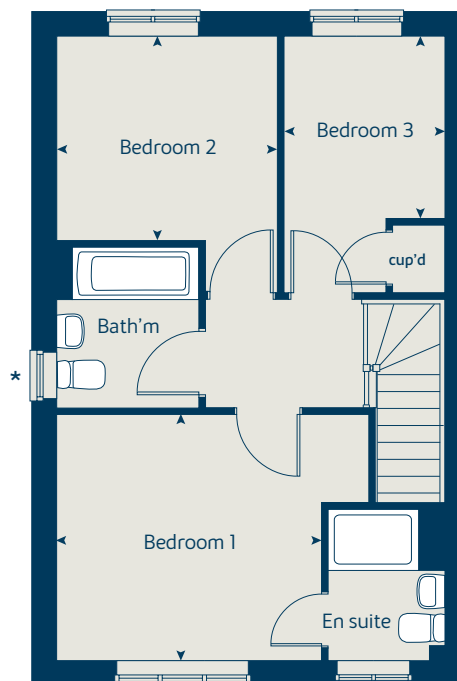
The floorplans shown are not to scale. Measurements are based on the original drawings. Slight variations may occur during construction.

Produced by the Vistry Group Design Studio.

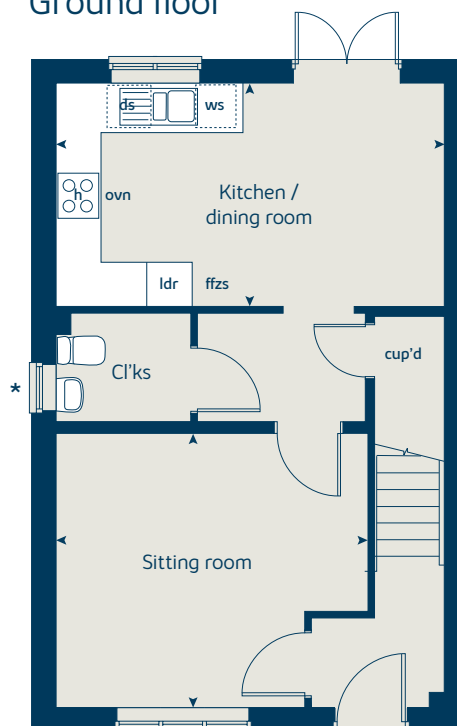
When you have finished with this leaflet please recycle it.

SDEEP GD56985 / 12.20

First floor



Ground floor





The Spruce

3 bedroom home

bovishomes.co.uk

**Bovis
Homes** 

The Spruce

3 bedroom home

Ground floor	metres	feet / inches
Kitchen	3.23 x 2.69	10' 7" x 8' 10"
Dining area	3.14 x 2.30	10' 4" x 7' 6"
Sitting room	5.53 x 3.32	18' 1" x 10' 10"

First floor

Bedroom 1	3.35 x 3.33	11' 0" x 10' 11"
Bedroom 2	3.61 x 3.18	11' 10" x 10' 5"
Bedroom 3	3.61 x 2.25	11' 10" x 7' 4"

The Spruce | X307 (IF) 01 vt SDEEP |

This floorplan has been produced for illustrative purposes only. Room sizes shown are between arrow points as indicated on plan. The dimensions have tolerances of + or -50mm and should not be used other than for general guidance. If specific dimensions are required, enquiries should be made to the sales consultant.

* Window omitted to plot 49 only. Please see sales consultant for further details.

ovn	oven	ffzs	fridge freezer space
h	hob	cup'd	cupboard
ds	dishwasher space	< >	measuring points
ws	washing machine space		

Please refer to the sales consultant for specific plot details as the illustrations shown are computer generated impressions of how the property may look so are indicative only. External details or finishes may vary on individual plots and homes may be built in either detached or attached styles depending on the development layout. Exact specifications, window styles and whether a property is left or right handed may differ from plot to plot.

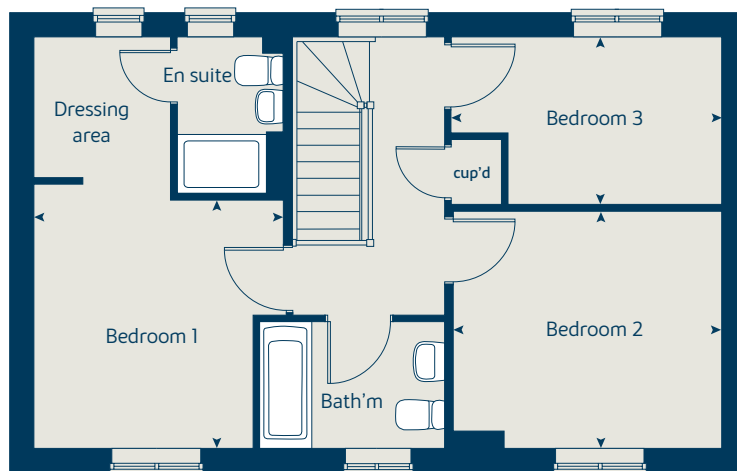
The floorplans shown are not to scale. Measurements are based on the original drawings. Slight variations may occur during construction.

Produced by the Vistry Group Design Studio.

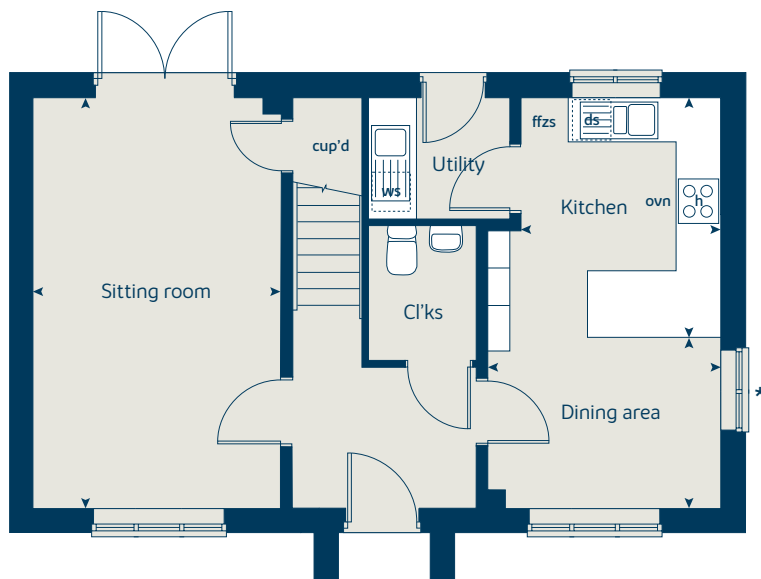
When you have finished with this leaflet please recycle it.

SDEEP DS00204 / 10.21

First floor



Ground floor





The Spruce II

3 bedroom home

bovishomes.co.uk

**Bovis
Homes** 

The Spruce II

3 bedroom home

Ground floor	metres	feet / inches
Kitchen	3.23 x 2.69	10' 7" x 8' 10"
Dining area	3.14 x 2.30	10' 4" x 7' 6"
Sitting room	5.53 x 3.32	18' 1" x 10' 10"

First floor

Bedroom 1	3.35 x 3.33	11' 0" x 10' 11"
Bedroom 2	3.61 x 3.18	11' 10" x 10' 5"
Bedroom 3	3.61 x 2.25	11' 10" x 7' 4"

The Spruce II | X307 (IF) 01 vt SDEEP |

This floorplan has been produced for illustrative purposes only. Room sizes shown are between arrow points as indicated on plan. The dimensions have tolerances of + or -50mm and should not be used other than for general guidance. If specific dimensions are required, enquiries should be made to the sales consultant.

* Door and windows apply to selected plots only. Please see sales consultant for further details.

ovn	oven	ffzs	fridge freezer space
h	hob	cup'd	cupboard
ds	dishwasher space	<>	measuring points
ws	washing machine space		

Please refer to the sales consultant for specific plot details as the illustrations shown are computer generated impressions of how the property may look so are indicative only. External details or finishes may vary on individual plots and homes may be built in either detached or attached styles depending on the development layout. Exact specifications, window styles and whether a property is left or right handed may differ from plot to plot.

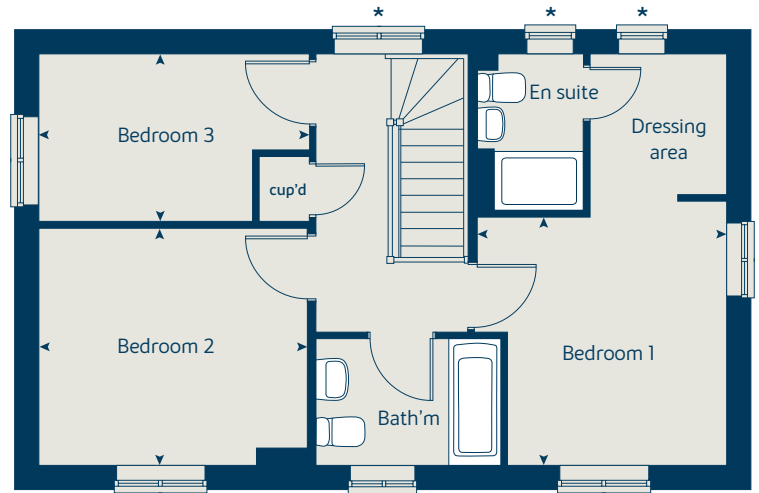
The floorplans shown are not to scale. Measurements are based on the original drawings. Slight variations may occur during construction.

Produced by the Vistry Group Design Studio.

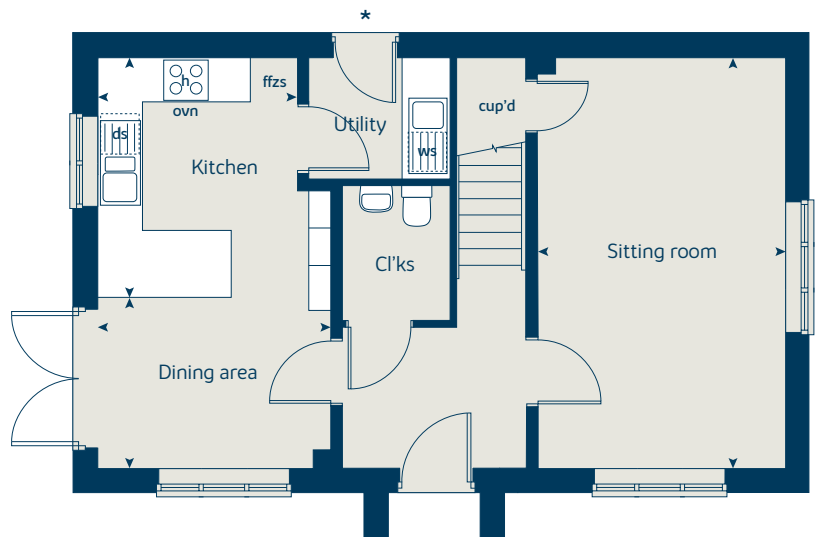
When you have finished with this leaflet please recycle it.

SDEEP DS00204 / 10.21

First floor



Ground floor





The Cypress

3 bedroom home

bovishomes.co.uk

**Bovis
Homes** 

The Cypress

3 bedroom home

Ground floor	metres	feet / inches
Kitchen / dining area	5.52 x 3.12	18' 1" x 10' 2"
Sitting room	4.40 x 3.40	14' 2" x 11' 1"

First floor

Bedroom 1	4.09 x 3.28	13' 5" x 10' 9"
Bedroom 2	3.28 x 2.84	10' 9" x 9' 4"
Bedroom 3	2.55 x 2.16	8' 4" x 7' 1"

The Cypress | X308 (IF) 01 vt SDEEP |

This floorplan has been produced for illustrative purposes only. Room sizes shown are between arrow points as indicated on plan. The dimensions have tolerances of + or -50mm and should not be used other than for general guidance. If specific dimensions are required, enquiries should be made to the sales consultant.

* Windows apply to selected plots only. Please see sales consultant for further details.

ovn	oven	ffzs	fridge freezer space
h	hob	cup'd	cupboard
ds	dishwasher space	◀ ▶	measuring points
ws	washing machine space		

Please refer to the sales consultant for specific plot details as the illustrations shown are computer generated impressions of how the property may look so are indicative only. External details or finishes may vary on individual plots and homes may be built in either detached or attached styles depending on the development layout. Exact specifications, window styles and whether a property is left or right handed may differ from plot to plot.

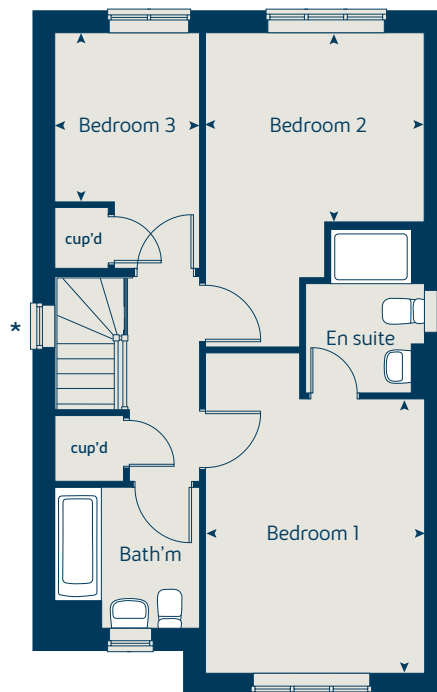
The floorplans shown are not to scale. Measurements are based on the original drawings. Slight variations may occur during construction.

Produced by the Vistry Group Design Studio.

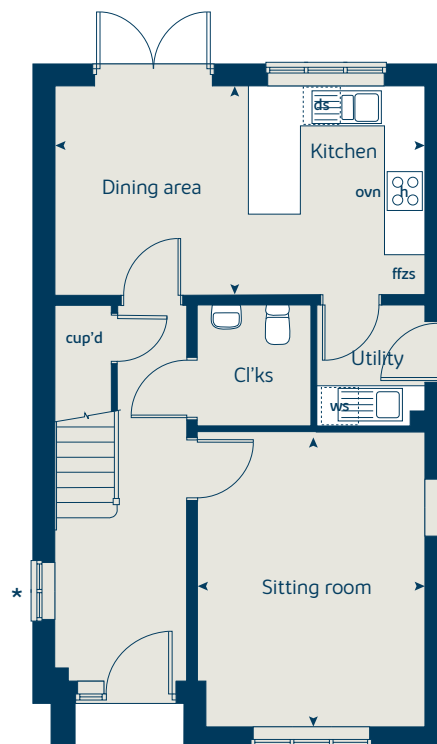
When you have finished with this leaflet please recycle it.

SDEEP GD56985 / 12.20

First floor



Ground floor





The Juniper

4 bedroom home

bovishomes.co.uk

**Bovis
Homes** 

The Juniper

4 bedroom home

Ground floor	metres	feet / inches
Kitchen / dining / family area	7.21 x 3.51	23' 7" x 11' 6"
Sitting room	4.55 x 3.04	14' 11" x 10' 0"
Study	2.34 x 1.85	7' 8" x 6' 0"

First floor

Bedroom 1	3.05 x 2.84	10' 0" x 9' 4"
Bedroom 2	2.97 x 2.84	9' 8" x 9' 3"
Bedroom 3	3.60 x 2.38	11' 9" x 7' 9"
Bedroom 4	3.51 x 2.38	11' 6" x 7' 9"

The Juniper | X412 01 vt SDEEP |

This floorplan has been produced for illustrative purposes only. Room sizes shown are between arrow points as indicated on plan. The dimensions have tolerances of + or -50mm and should not be used other than for general guidance. If specific dimensions are required, enquiries should be made to the sales consultant.

* Window applies to selected plots only. Please see sales consultant for further details.

ovn	oven	ffzr	fridge freezer
h	hob	w	wardrobe
ds	dishwasher space	cup'd	cupboard
ws	washing machine space	<>	measuring points
ldr	larder		

Please refer to the sales consultant for specific plot details as the illustrations shown are computer generated impressions of how the property may look so are indicative only. External details or finishes may vary on individual plots and homes may be built in either detached or attached styles depending on the development layout. Exact specifications, window styles and whether a property is left or right handed may differ from plot to plot.

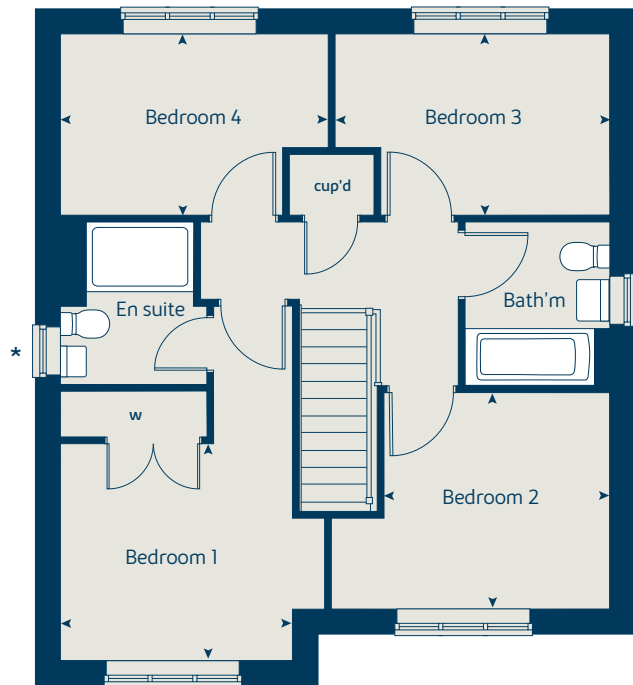
The floorplans shown are not to scale. Measurements are based on the original drawings. Slight variations may occur during construction.

Produced by the Vistry Group Design Studio.

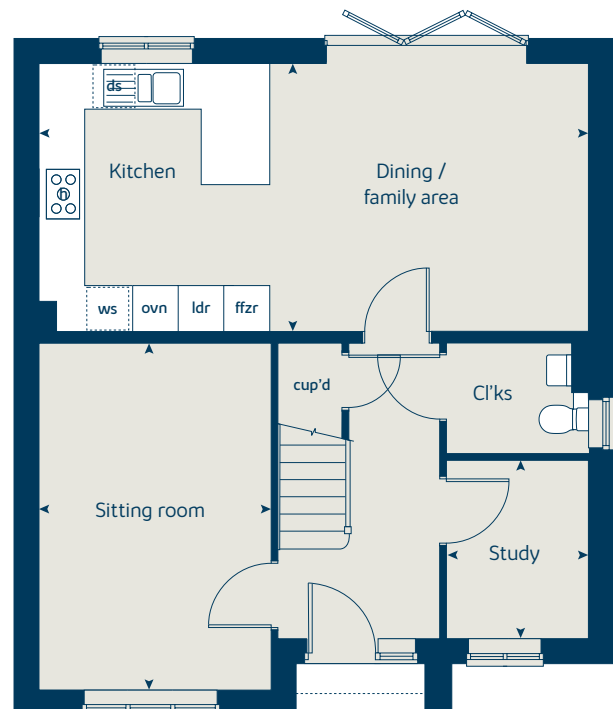
When you have finished with this leaflet please recycle it.

SDEEP GD56985 / 12.20

First floor



Ground floor





The Chestnut

4 bedroom home

bovishomes.co.uk

**Bovis
Homes** 

The Chestnut

4 bedroom home

Ground floor	metres	feet / inches
Kitchen	4.03 x 3.04	13' 2" x 10' 0"
Dining / family area	4.59 x 2.85	15' 0" x 9' 4"
Sitting room	4.98 x 3.40	16' 4" x 11' 1"
Study	3.40 x 1.81	11' 1" x 5' 11"

First floor

Bedroom 1	4.47 x 3.24	14' 8" x 10' 7"
Bedroom 2	3.48 x 3.36	11' 5" x 11' 0"
Bedroom 3	3.42 x 2.34	11' 2" x 7' 8"
Bedroom 4	3.21 x 2.35	10' 6" x 7' 8"

The Chestnut | X413 01 vt SDEEP |

This floorplan has been produced for illustrative purposes only. Room sizes shown are between arrow points as indicated on plan. The dimensions have tolerances of + or -50mm and should not be used other than for general guidance. If specific dimensions are required, enquiries should be made to the sales consultant.

ovn	oven	ffzr	fridge freezer
h	hob	w	wardrobe
ds	dishwasher space	cup'd	cupboard
ws	washing machine space	<>	measuring points
ldr	larder		

Please refer to the sales consultant for specific plot details as the illustrations shown are computer generated impressions of how the property may look so are indicative only. External details or finishes may vary on individual plots and homes may be built in either detached or attached styles depending on the development layout. Exact specifications, window styles and whether a property is left or right handed may differ from plot to plot.

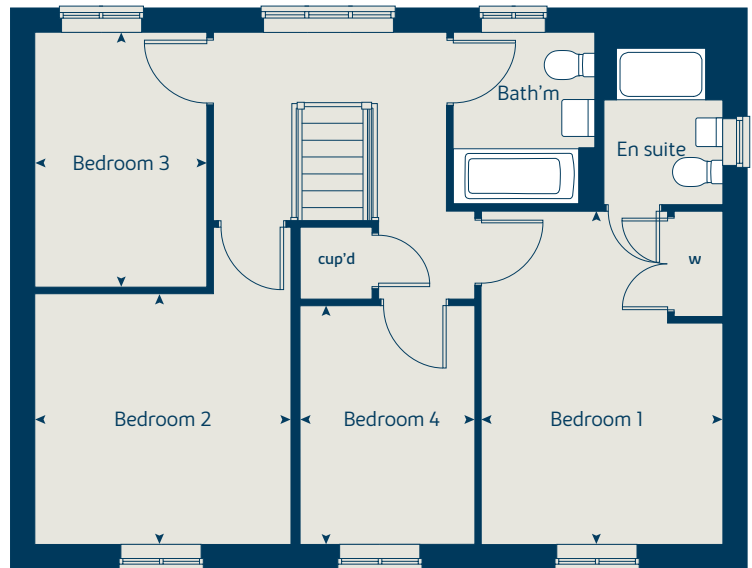
The floorplans shown are not to scale. Measurements are based on the original drawings. Slight variations may occur during construction.

Produced by the Vistry Group Design Studio.

When you have finished with this leaflet please recycle it.

SDEEP GD56985 / 12.20

First floor



Ground floor





The Alder

4 bedroom home

bovishomes.co.uk

**Bovis
Homes** 

The Alder

4 bedroom home

Ground floor	metres	feet / inches
Kitchen	3.43 x 3.24	11' 3" x 10' 6"
Dining / family area	5.35 x 3.24	17' 6" x 10' 6"
Sitting room	4.28 x 3.38	14' 0" x 11' 1"

First floor

Bedroom 1	3.88 x 3.38	12' 8" x 11' 1"
Bedroom 2	4.44 x 3.03	14' 7" x 9' 11"
Bedroom 3	3.66 x 3.03	12' 0" x 9' 11"
Bedroom 4	3.35 x 3.13	10' 11" x 10' 3"

The Alder | X415 01 vt SDEEP |

This floorplan has been produced for illustrative purposes only. Room sizes shown are between arrow points as indicated on plan. The dimensions have tolerances of + or -50mm and should not be used other than for general guidance. If specific dimensions are required, enquiries should be made to the sales consultant.

ovn	oven	ldr	larder
h	hob	w	wardrobe
ds	dishwasher space	cup'd	cupboard
ws	washing machine space	< >	measuring points
ffzr	fridge freezer		

Please refer to the sales consultant for specific plot details as the illustrations shown are computer generated impressions of how the property may look so are indicative only. External details or finishes may vary on individual plots and homes may be built in either detached or attached styles depending on the development layout. Exact specifications, window styles and whether a property is left or right handed may differ from plot to plot.

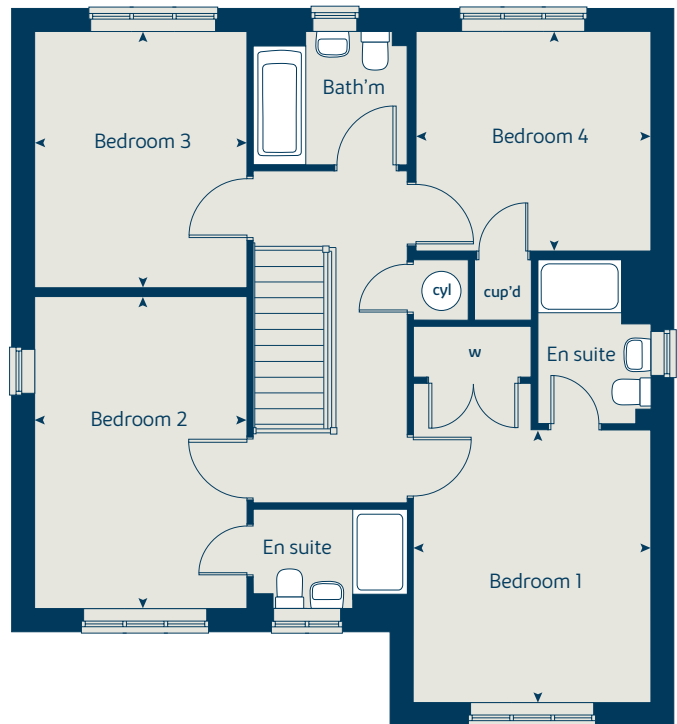
The floorplans shown are not to scale. Measurements are based on the original drawings. Slight variations may occur during construction.

Produced by the Vistry Group Design Studio.

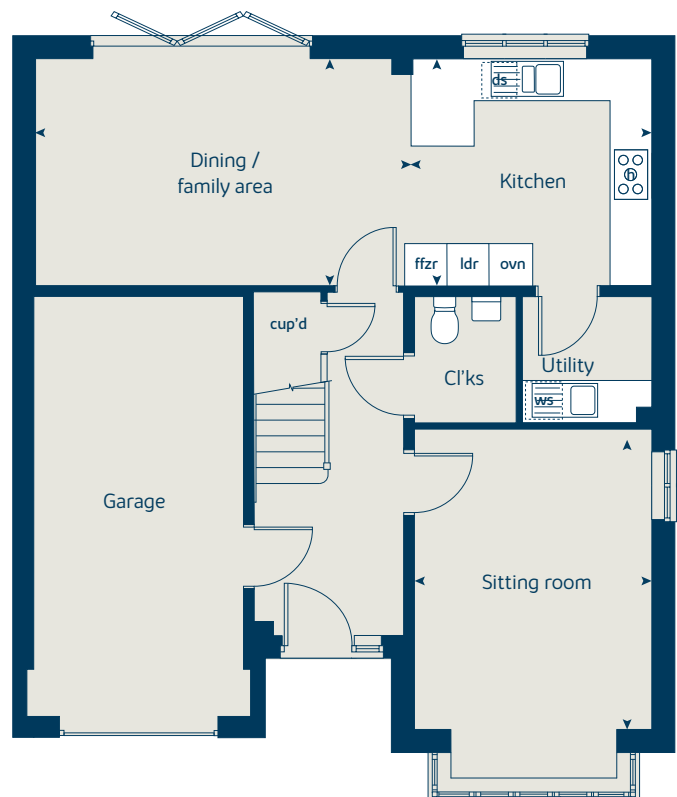
When you have finished with this leaflet please recycle it.

SDEEP GD56985 / 12.20

First floor



Ground floor





The Maple

4 bedroom home

bovishomes.co.uk

**Bovis
Homes** 

The Maple

4 bedroom home

Ground floor	metres	feet / inches
Kitchen	3.58 x 3.50	11' 9" x 11' 5"
Family / dining area	7.08 x 3.24	23' 3" x 10' 8"
Sitting room	4.50 x 3.50	14' 9" x 11' 5"
Study	2.50 x 2.29	8' 2" x 7' 6"

First floor

Bedroom 1	3.58 x 3.50	11' 9" x 11' 5"
Bedroom 2	3.68 x 3.56	12' 0" x 11' 7"
Bedroom 3	4.13 x 2.89	13' 7" x 9' 5"
Bedroom 4	2.95 x 2.93	9' 8" x 9' 7"

The Maple | X416 01 SDEEP |

This floorplan has been produced for illustrative purposes only. Room sizes shown are between arrow points as indicated on plan. The dimensions have tolerances of + or -50mm and should not be used other than for general guidance. If specific dimensions are required, enquiries should be made to the sales consultant.

ovn	oven	cyl	hot water cylinder
h	hob	w	wardrobe
dw	dishwasher	cup'd	cupboard
ws	washing machine space	<>	measuring points
ffzr	fridge freezer		

Please refer to the sales consultant for specific plot details as the illustrations shown are computer generated impressions of how the property may look so are indicative only. External details or finishes may vary on individual plots and homes may be built in either detached or attached styles depending on the development layout. Exact specifications, window styles and whether a property is left or right handed may differ from plot to plot.

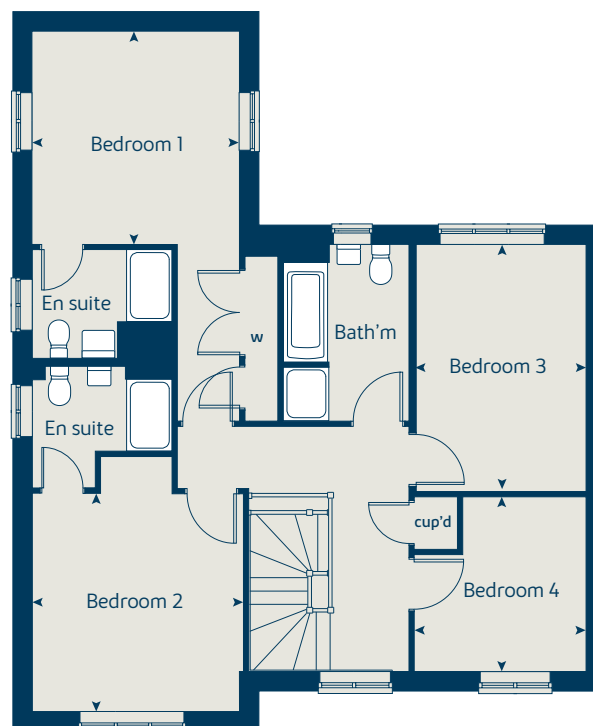
The floorplans shown are not to scale. Measurements are based on the original drawings. Slight variations may occur during construction.

Produced by the Vistry Group Design Studio.

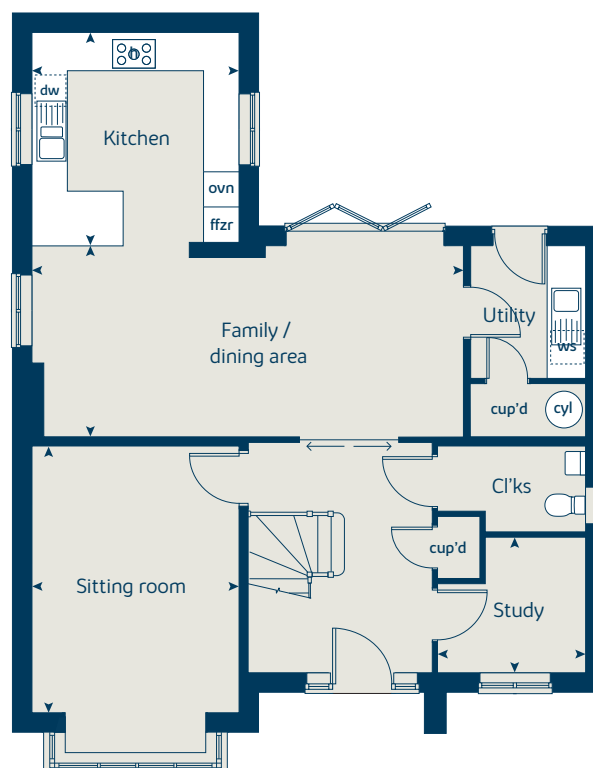
When you have finished with this leaflet please recycle it.

SDEEP GD56985 / 12.20

First floor



Ground floor





The Birch

5 bedroom home

bovishomes.co.uk



The Birch

5 bedroom home

Ground floor	metres	feet / inches
Kitchen	4.54 x 3.65	14' 11" x 12' 0"
Family / dining area	5.47 x 3.51	17' 11" x 11' 6"
Sitting room	4.30 x 3.61	14' 1" x 11' 10"
Study / dining room	3.41 x 3.00	11' 2" x 9' 10"

First floor

Bedroom 1	3.62 x 3.51	11' 10" x 11' 6"
Bedroom 2	3.92 x 2.90	12' 10" x 9' 7"
Bedroom 3	3.06 x 2.85	10' 1" x 9' 3"
Bedroom 4	3.31 x 2.83	10' 10" x 9' 3"
Bedroom 5	2.69 x 2.83	8' 10" x 9' 3"

The Birch | XS18 (IF) 01 vt SDEEP |

This floorplan has been produced for illustrative purposes only. Room sizes shown are between arrow points as indicated on plan. The dimensions have tolerances of + or -50mm and should not be used other than for general guidance. If specific dimensions are required, enquiries should be made to the sales consultant.

ovn	oven	ldr	larder
h	hob	cyl	hot water cylinder
dw	dishwasher	w	wardrobe
ws	washing machine space	cup'd	cupboard
ffzr	fridge freezer	<>	measuring points

Please refer to the sales consultant for specific plot details as the illustrations shown are computer generated impressions of how the property may look so are indicative only. External details or finishes may vary on individual plots and homes may be built in either detached or attached styles depending on the development layout. Exact specifications, window styles and whether a property is left or right handed may differ from plot to plot.

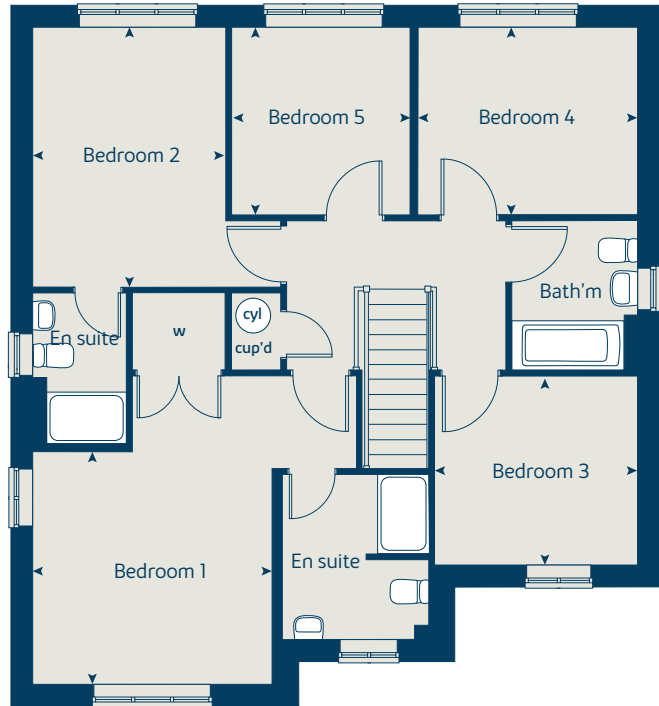
The floorplans shown are not to scale. Measurements are based on the original drawings. Slight variations may occur during construction.

Produced by the Vistry Group Design Studio.

When you have finished with this leaflet please recycle it.

SDEEP GD56985 / 12.20

First floor



Ground floor



So much choice...

Part of the excitement of buying a new home is the thrill of being the first person to live in the property and having a brand new contemporary kitchen and modern bathroom. Our premium brand partners ensure that all of our fixtures and fittings comply with the latest Government building regulations and only branded appliances are installed in your new home.

Once you know what specification comes included, you'll have a choice from our specially selected tiles for your kitchen and bathrooms, as well as kitchen worktops and cupboard doors. You can then use the Bovis Homes **Select** brochure to add the finishing touches to your home to make it extra special for you!

From personalising your bathrooms with stunning ceramics, or adding smooth sliding wardrobes to your master bedroom, there are a wide range of additional options and upgrades available.

The availability of items is subject to the stage of build, and can vary by development and house type. Our sales consultants will be happy to provide guidance.



When you have finished with this leaflet please recycle it.

The specification shown in this leaflet is correct at the time of going to press. Bovis Homes is continually reviewing and updating the specification on all housetypes and therefore reserves the right to change specification details. Photographs depict a typical Bovis Homes interior and may include optional upgrades. External details, finishes and electrical layouts may vary on individual plots. The illustrations are computer generated impressions of how the property may look so are indicative only. For full details regarding current specification and finishes, for the plots you are interested in, please refer to our sales consultant.

Produced by the Vistry Group Design Studio.

SDEEP DS04677 / 01.23

Customer use only

Signed..... Date.....



Mindenhurst Deepcut

Specification

bovishomes.co.uk



Mindenhurst

Deepcut

Use this guide to see what features are included in your new home. Your sales consultant will be happy to discuss the **Select** range of extras available.



Kitchen

1 and 2 bedroom
Cyprus House
2 bedroom
The Holly
3 bedroom
The Hazel
The Cypress
The Spruce
The Spruce II
4 bedroom
The Juniper
The Chestnut
The Alder
The Maple
5 bedroom
The Birch

Choice of Standard fitted kitchen (doors and worktops)*	■	■	■	■	■	■	■	■	■
Choice of Premium fitted kitchen (doors and worktops)*									■
Stainless steel sink and drainer (single bowl) with chrome mixer tap	■	■							
Stainless steel sink and drainer (single and a half bowl) with chrome mixer tap			■	■	■	■		■	■
Stainless steel sink and drainer (single bowl) with chrome mixer tap in utility				■	■	■		■	■
Indesit hob (60cm) with built-in single underoven, with stainless steel splashback and curved glass chimney hood	■	■	■	■	■	■			
Hotpoint hob (75cm) with built-in double high level oven, with glass splashback and curved glass chimney hood							■	■	
Bosch (75cm) hob with built-in double oven at high level, with glass splashback and stainless steel pyramid chimney hood								■	■
Downlighting	■	■	■	■	■	■	■	■	■
LED under-unit flexible strip lighting									■
Fridge / freezer space	■	■	■	■	■	■			
Integrated (Indesit) 50 / 50 fridge-freezer							■	■	■
Space for integrated dishwasher with plumbing and electrics (inc. removable base unit)	■	■	■	■	■	■	■	■	
Integrated (Indesit) dishwasher								■	■
Space for washing machine with plumbing and electrics in utility				■	■	■		■	■
Space for washing machine with plumbing and electrics in kitchen	■	■	■				■		

Bathrooms and en suite(s)

Ideal Standard contemporary white sanitary ware suite (pedestal sink and floor standing toilet)	■	■	■	■	■	■	■	■	■
Ideal Standard low profile shower tray with glass enclosure (where applicable)	■	■	■	■	■	■	■	■	■
Handheld hair wash attachment	■	■	■	■	■	■	■	■	■
En suite to bedroom 1 (where applicable)	■	■	■	■	■	■	■	■	■
En suite to bedroom 2							■	■	■
Choice of Standard Porcelanosa wall tiling (splashback, half-height over bath, and full-height to shower cubicle)*	■	■	■	■	■	■	■	■	■
Choice of Standard Porcelanosa wall tiling (splashback to basin in WC, half-height to bathroom walls with sanitaryware, half-height over bath and full-height to shower cubicle)*									■
Shaver socket to main (bedroom 1) en suite	■	■	■	■	■	■	■	■	■
Chrome bezel LED bulkhead to bathroom and en suite(s)	■	■	■	■	■	■	■	■	■
Radiator in bathroom / en suite (where applicable)	■	■	■	■	■	■			
Chrome towel warmer in bathroom and en suite(s)							■	■	■

Bedrooms

Built-in wardrobe(s) to bedroom 1 (with cottage style hinged doors, shelf and rail)						■	■	■	■	■
---	--	--	--	--	--	---	---	---	---	---

Doors and Windows

Front door with multi-point security locking system and security chain	■	■	■	■	■	■	■	■	■
PVCu double glazing to windows	■	■	■	■	■	■	■	■	■
Double glazed PVCu French doors (where applicable)	■	■	■	■	■	■	■	■	■
Powder coated aluminium double glazed bi-fold doors									■
White painted cottage style internal doors with chrome lever handles	■	■	■	■	■	■	■	■	■
Paving outside French / bi-fold door and path to garage personnel door (where applicable)	■	■	■	■	■	■	■	■	■

General

White painted walls and smooth white ceilings	■	■	■	■	■	■	■	■	■
Combined usb / double sockets in kitchen and bedroom 1	■	■	■	■	■	■	■	■	■
Multi-media point in living room	■	■	■	■	■	■	■	■	■
TV point to bedroom 1 and family room (where applicable)	■	■	■	■	■	■	■	■	■
Master telephone socket (plus to study where shown)	■	■	■	■	■	■	■	■	■
Gas central heating with wall mounted combi-boiler, programme selector and room thermostat(s)	■	■	■	■	■	■	■	■	■
Gas central heating with wall mounted boiler and separate hot water cylinder, programme selector and room thermostat(s)									■
Thermostatic valves to all radiators (with the exception of rooms with separate thermostat control)	■	■	■	■	■	■	■	■	■
Fitted external tap	■	■	■	■	■	■	■	■	■
Light to front porch and wiring to the rear of house	■	■	■	■	■	■	■	■	■
Mains Operated Doorbell (Push), Satin Chrome finish	■	■	■	■	■	■	■	■	■
Mains wired smoke detectors with battery back-up	■	■	■	■	■	■	■	■	■
Battery powered Carbon Monoxide detector (wall mounted) to be provided for each floor	■	■	■	■	■	■	■	■	■
Power and lighting to 'on plot' garage (where applicable)									■
Enclosed fenced rear garden, and garden gate (where applicable)	■	■	■	■	■	■	■	■	■
Landscaped front gardens	■	■	■	■	■	■	■	■	■
NHBC Buildmark cover	■	■	■	■	■	■	■	■	■
First two years' customer service support from Bovis Homes	■	■	■	■	■	■	■	■	■

■ Fitted as standard - included in the property
* Subject to stage of construction