

WILKINSON

SALES • LETTINGS • MANAGEMENT

£170,000

Oldfield, Tewkesbury, GL20



2

Bedrooms



1

Bathroom

101 High Street, Tewkesbury, Gloucestershire, GL20 5JZ |
Info@wilkinsonslm.co.uk

01684 367736



- Second Floor Apartment
- Lounge/Dining Room
- Balcony with Beautiful Field Views
- Kitchen
- Two Double Bedrooms
- Bathroom
- UPVC Double Glazing
- Large Garden
- Tewkesbury Town Location
- Walking Distance to Local Amenities

Wilkinson SLM are delighted to offer for sale with NO ONWARD CHAIN a two bedroom second floor apartment ideally located in Tewkesbury Town Centre with a BALCONY, LARGE REAR GARDEN & BEAUTIFUL VIEWS!

The delightful accommodation comprises hallway with a useful storage cupboard, a lounge/dining room with a door leading out onto the balcony. This is a fantastic feature to this home as you can enjoy the countryside views from the balcony with a cuppa! The kitchen is also located off the hallway and has the added benefit of various base and wall units, built in electric oven and hob.

There are two double bedrooms with bedroom one benefitting a built in sliding door wardrobe. There is also a family bathroom and an airing cupboard off the hallway.

This home is further complemented by UPVC double glazing and your own private large garden. This is not one to be missed!

Service Charge incl Ground Rent: £296 per year.

Lease Length: 78 years left

Lounge/Dining Room 16' 1" x 10' 5" (4.90m x 3.17m)

Kitchen 9' 6" x 7' 2" (2.90m x 2.18m)

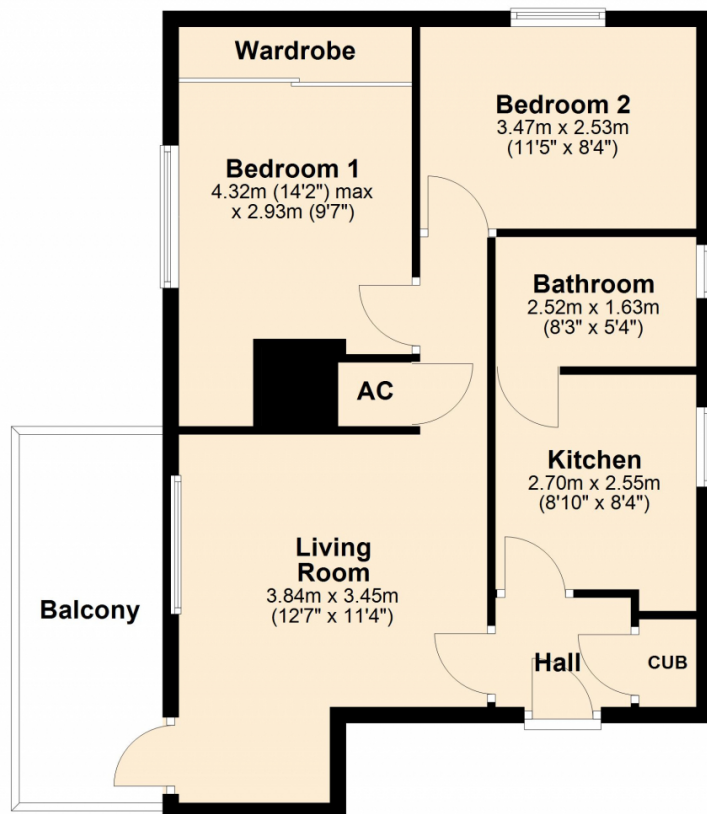
Bedroom One 14' 2" x 9' 7" (4.32m x 2.92m)
maximum measurement

Bedroom Two 8' 8" x 7' 1" (2.64m x 2.16m)

Bathroom 8' 3" x 6' 3" (2.51m x 1.91m)
maximum measurement

Ground Floor

Approx. 57.7 sq. metres (621.2 sq. feet)



Total area: approx. 57.7 sq. metres (621.2 sq. feet)

Energy Efficiency Rating

	Current	Potential
Very energy efficient - lower running costs		
(92+) A		
(81-91) B		
(69-80) C		77
(55-68) D		
(39-54) E	41	
(21-38) F		
(1-20) G		
Not energy efficient - higher running costs		
England, Scotland & Wales		
	EU Directive 2002/91/EC	

Address: Oldfield, Tewkesbury, GL20

